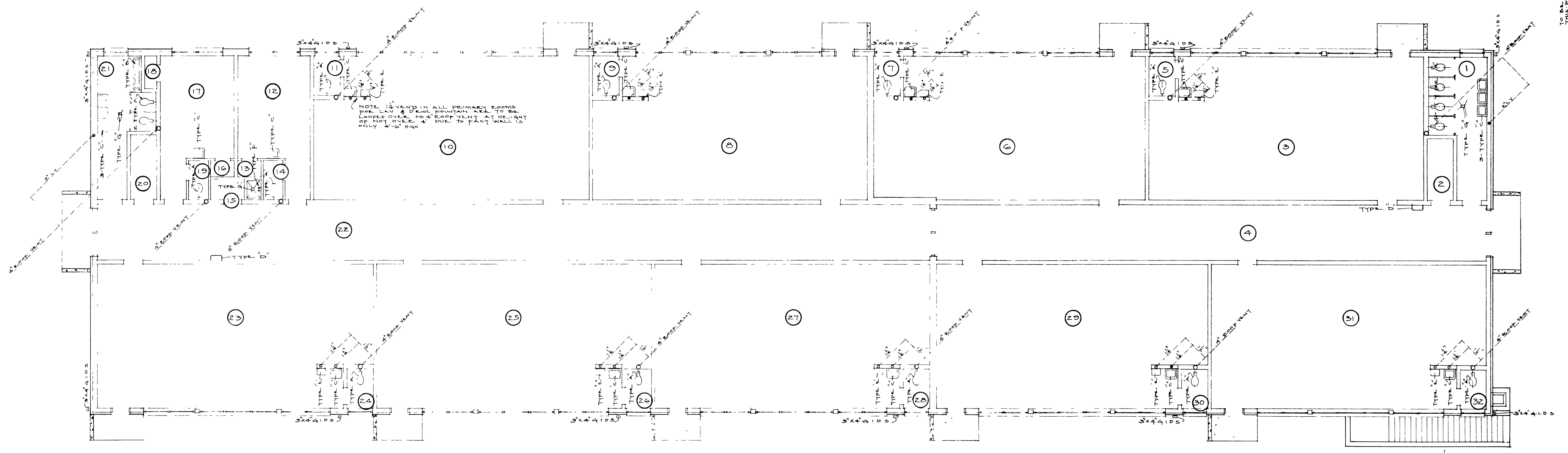


- PLUMBING SYMBOLS
- CAST IRON
 - - - VITREOUS CLAY
 - GALV. COLD WATER
 - GALV. HOT WATER
 - - - VENT LINED

NOTE: PLUMBING LINES ARE TO RUN IN BOTTOM OF HEATING TRUNCH TO AVOID CONFLICT WITH HEATING MAINS

PLUMBING DEPARTMENT



NOTE: 1 1/2\"/>

PLUMBING DEPARTMENT

200 1419