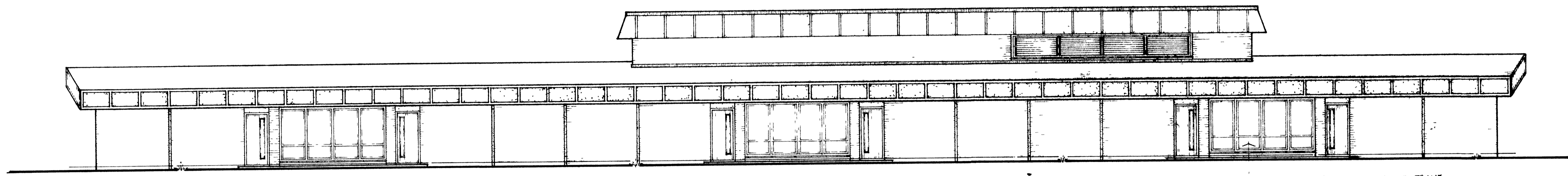


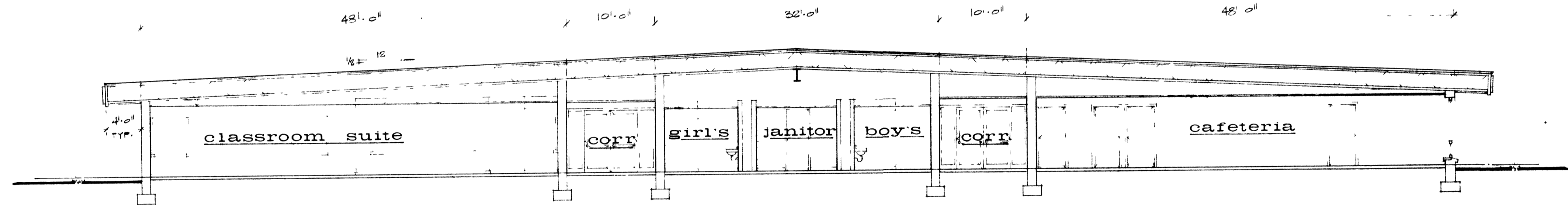
WEST ELEVATION

1/8" = 1'-0"



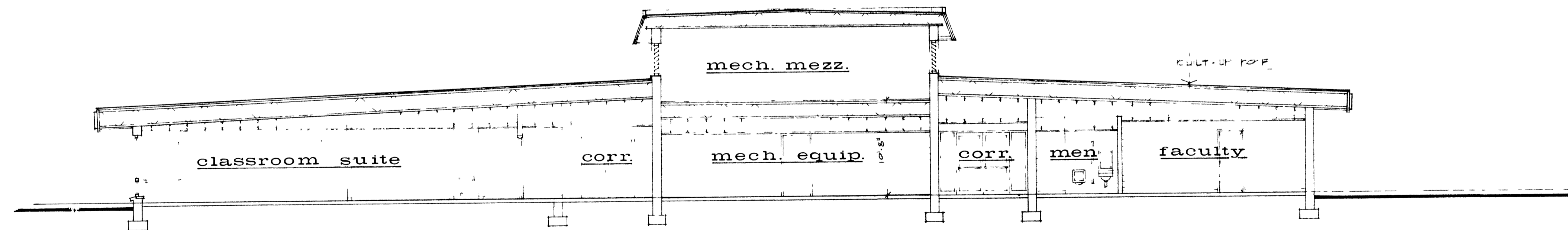
NORTH ELEVATION

1/8" = 1'-0"



SECTION 'A-A'

1/8" = 1'-0"



SECTION 'B-B'

1/8" = 1'-0"

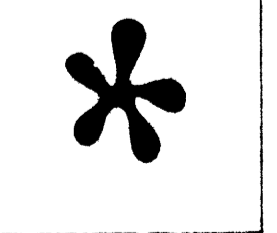
DESIGN DEVELOPMENT DWG.

ERIC TOWNSON ARCHITECT
 box 188 · murphy, north carolina



ANDREWS ELEMENTARY
 SCHOOL
 ANDREWS, NORTH CAR.

DATE
 [july 1971]
 DRAWN
 [townson]
 REVISED



SHEET
 NUMBER
 (3)
 OF 3