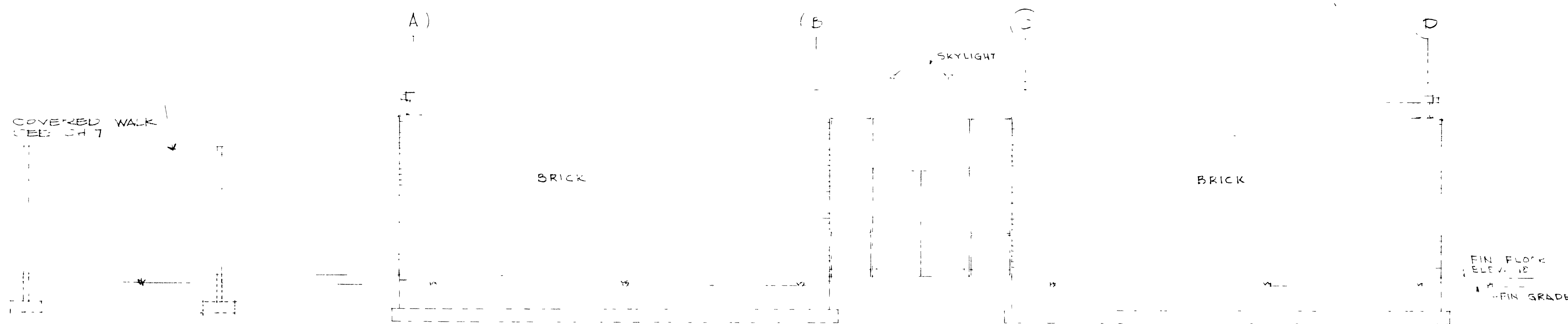
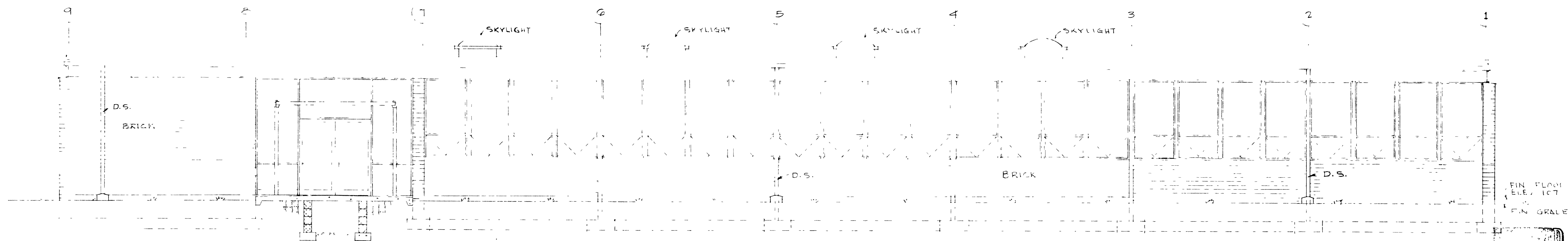


SOUTH ELEVATION
SCALE 1/4" = 1'-0"



WEST ELEVATION
(EAST ELEVATION SIMILAR BUT OPPOSITE HAND)
SCALE 1/4" = 1'-0"



NORTH ELEVATION
SCALE 1/4" = 1'-0"

200 1420 DIVISION OF SCHOOL PLANNING

A CLASSROOM ADDITION TO
ANDREWS HIGH SCHOOL
ANDREWS, NORTH CAROLINA

DRAWN BY	ELEVATIONS	DATE
		6-11-68
JAMES L. PADGETT, AIA, ARCHITECT		SHEET NO.
SUITE 405 NORTHWESTERN BANK BUILDING		4
ASHEVILLE, NORTH CAROLINA 28807		OF 7

