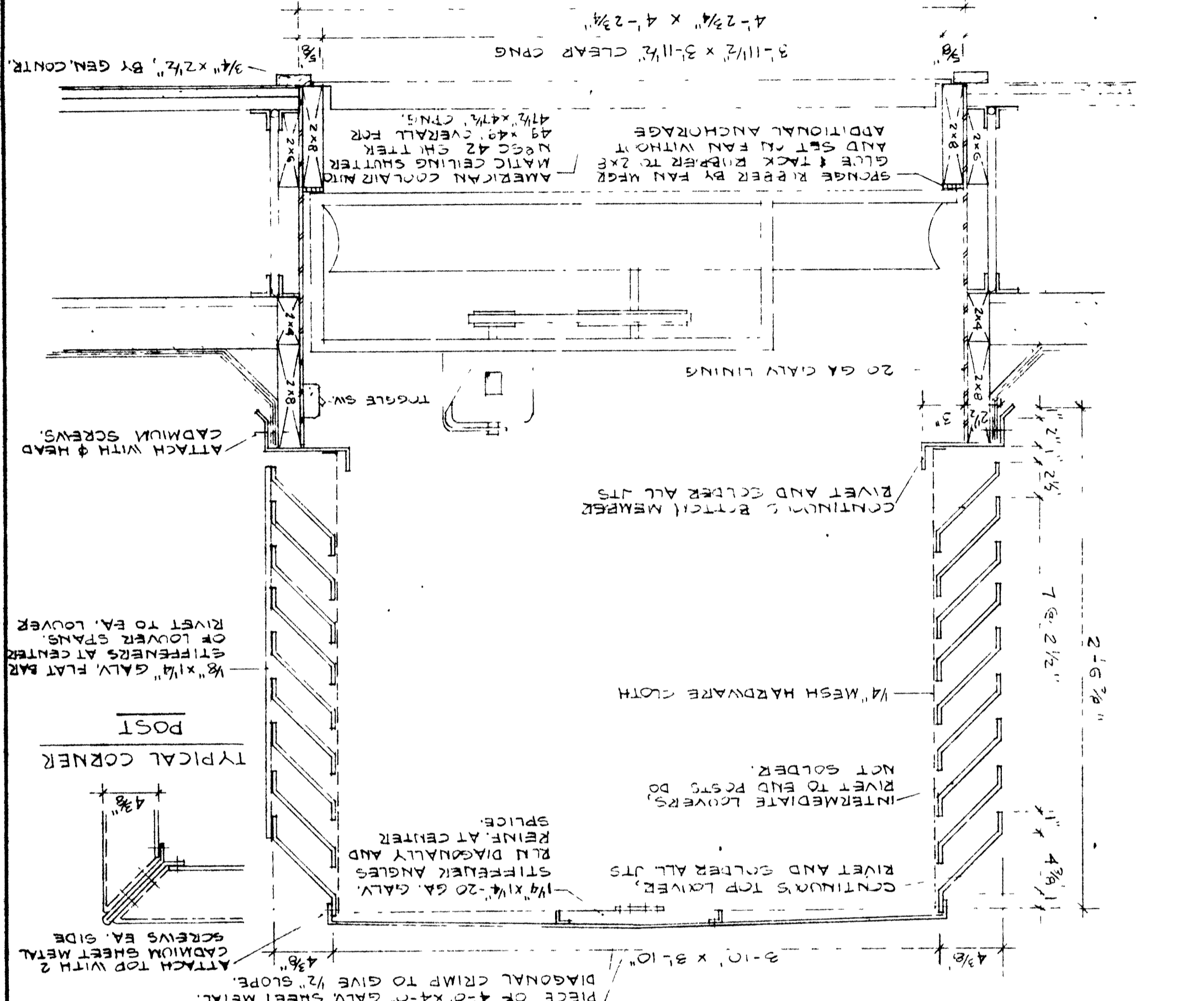
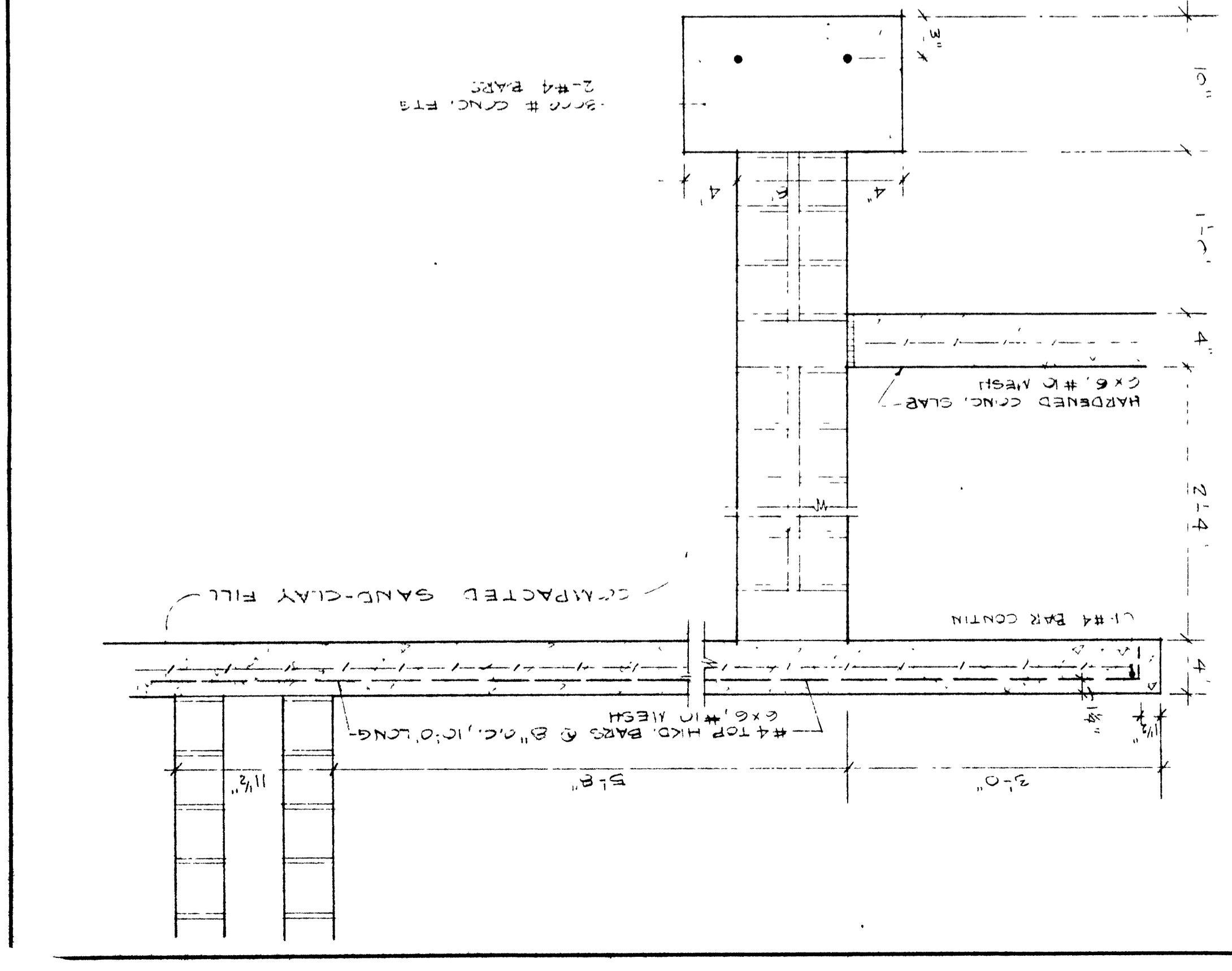


AMERICAN OCCUR FAN NO. P4450
1/2" H. - 11 1/2" V. - 1 1/2" 49X43X1/8" METAL
SIZE 15.000 C.F.M. AT 0" S.P.
1/2" H. - 11 1/2" V. - 1 1/2" 49X43X1/8" METAL
ZINC CHROMATE BEFORE DELIVERY
FAN BY ROOFING CONTR.
WIRING BY ELECTR. CONTR.
WOOD FRG. FRAMES AND WOOD TRIM BY
GEN. CONTR. FRAMES FROM JOISTS AS SHOWN
ON SKYDOME DETAIL.

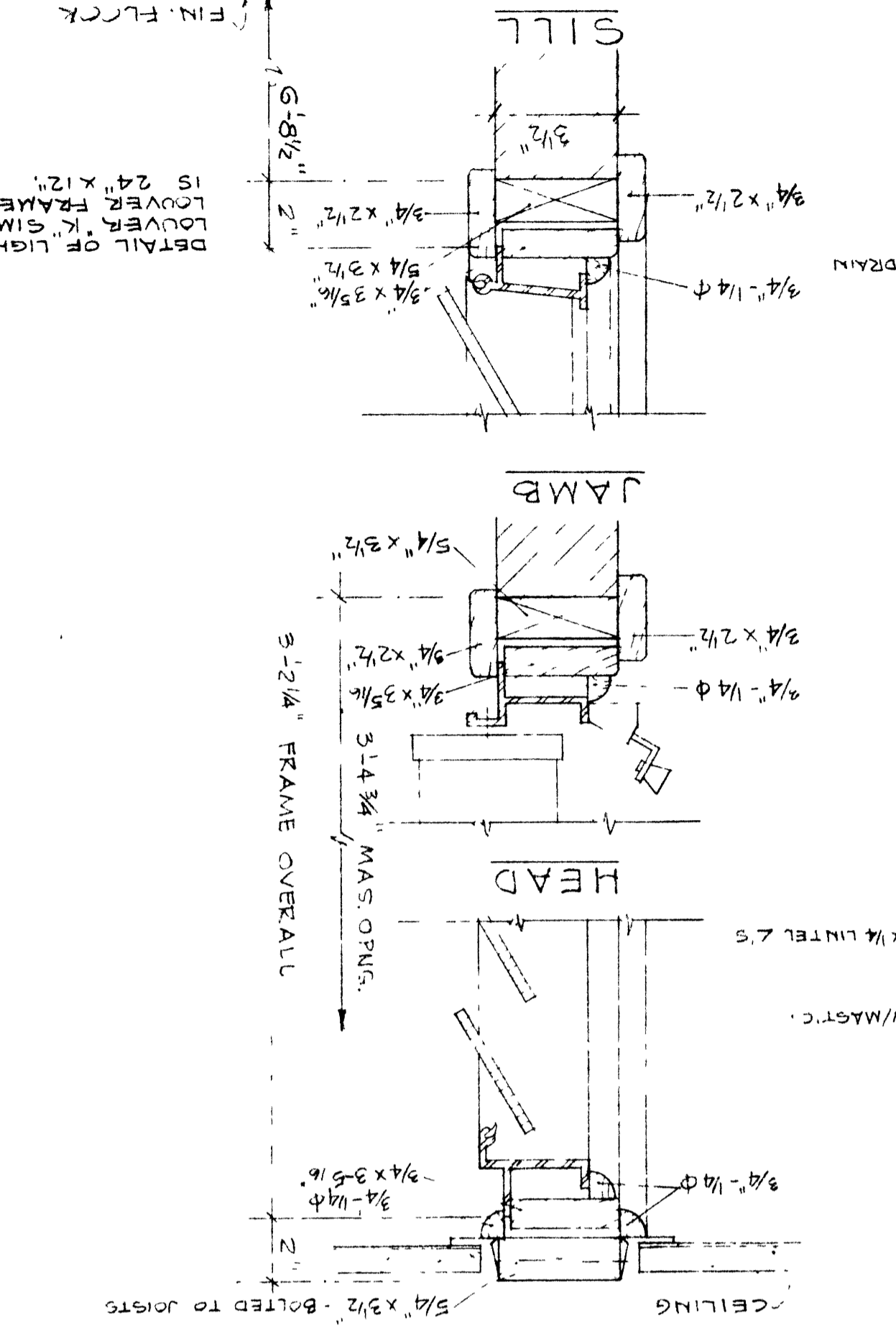
TYPICAL ROOF TYPE VENTILATING FAN-3 REQ'D



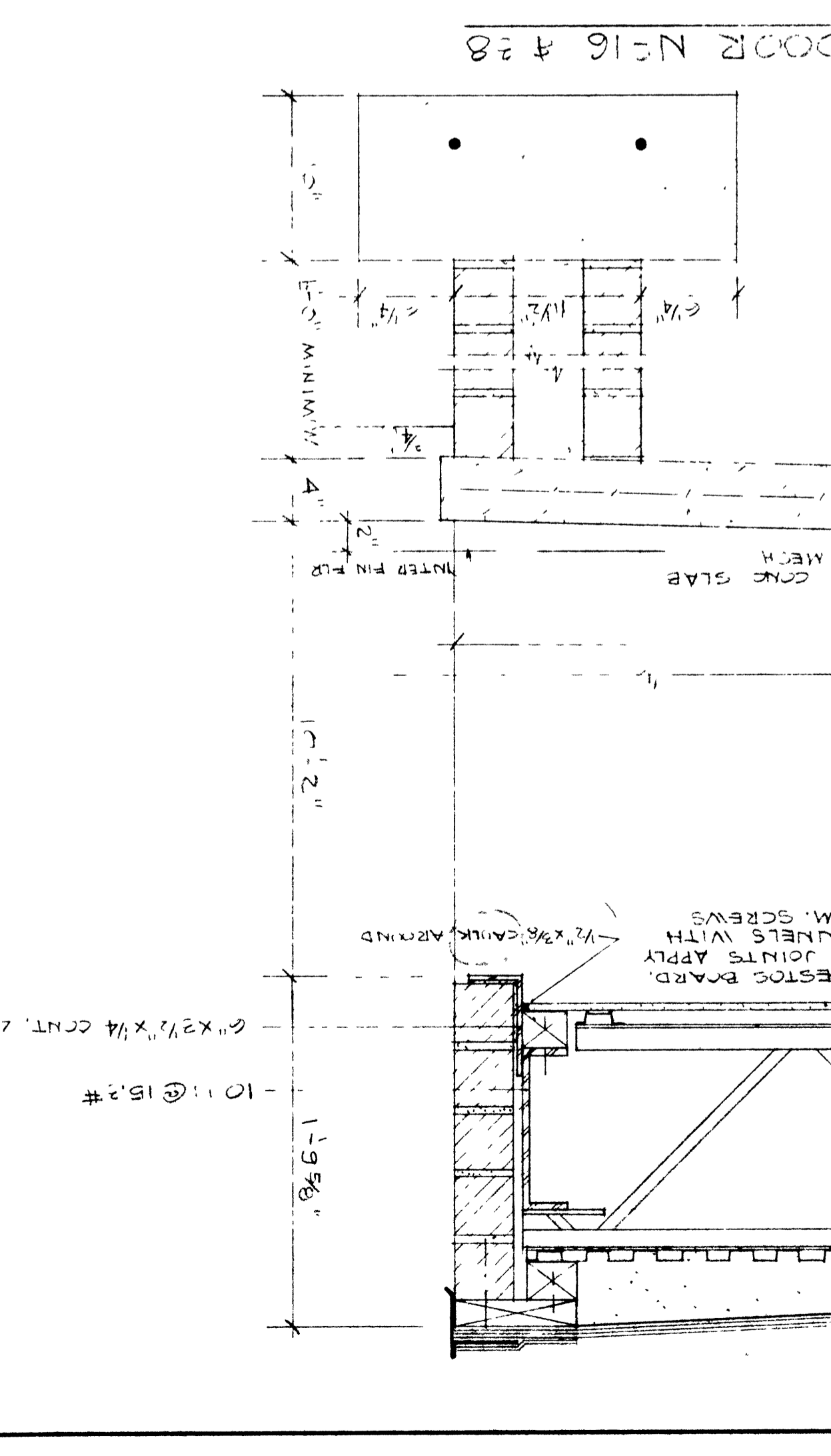
SECTION THRU BOILER ROOM COAL DUMP PLATFORM



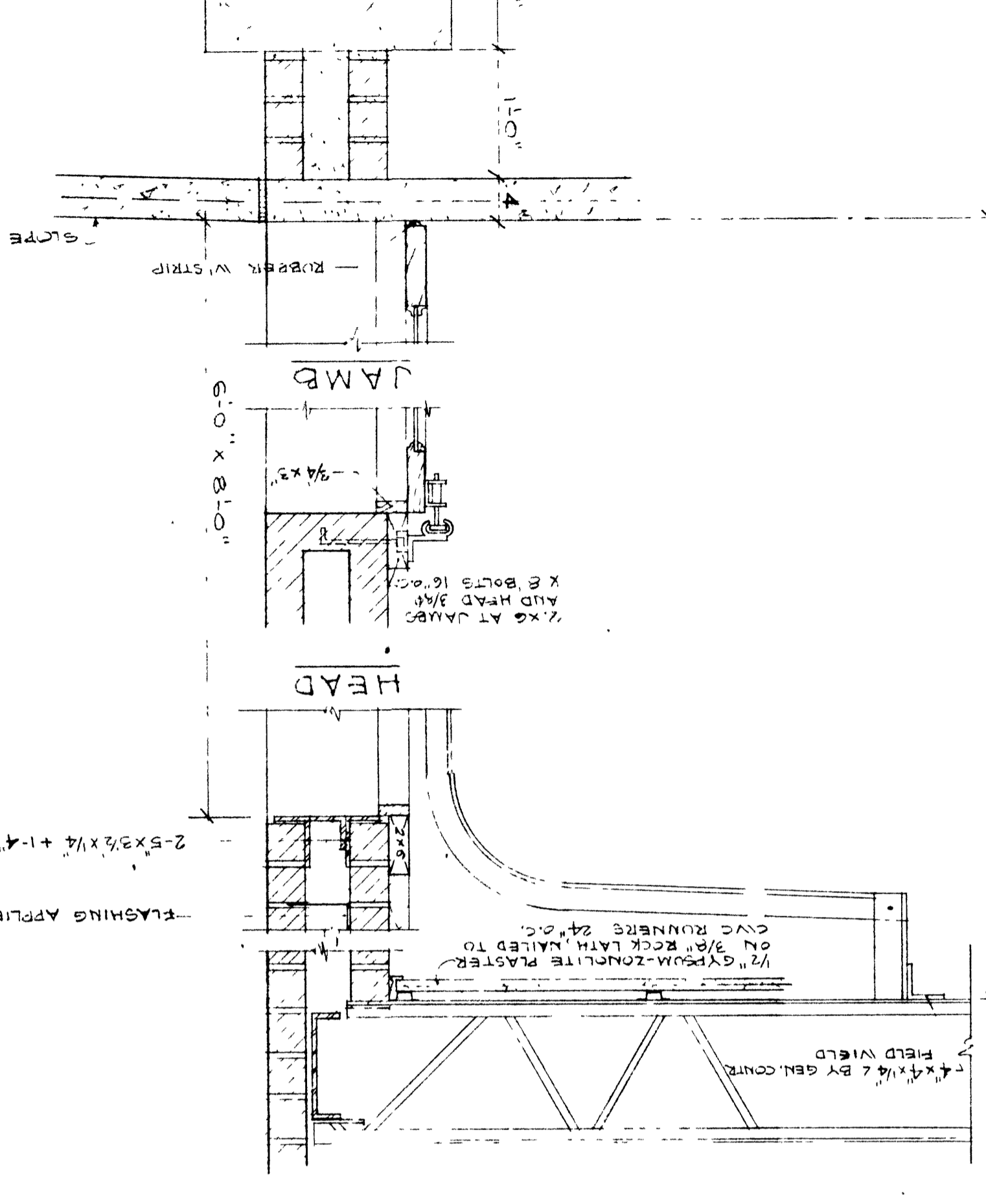
CORRIDOR JALOUSIE DETAIL - J



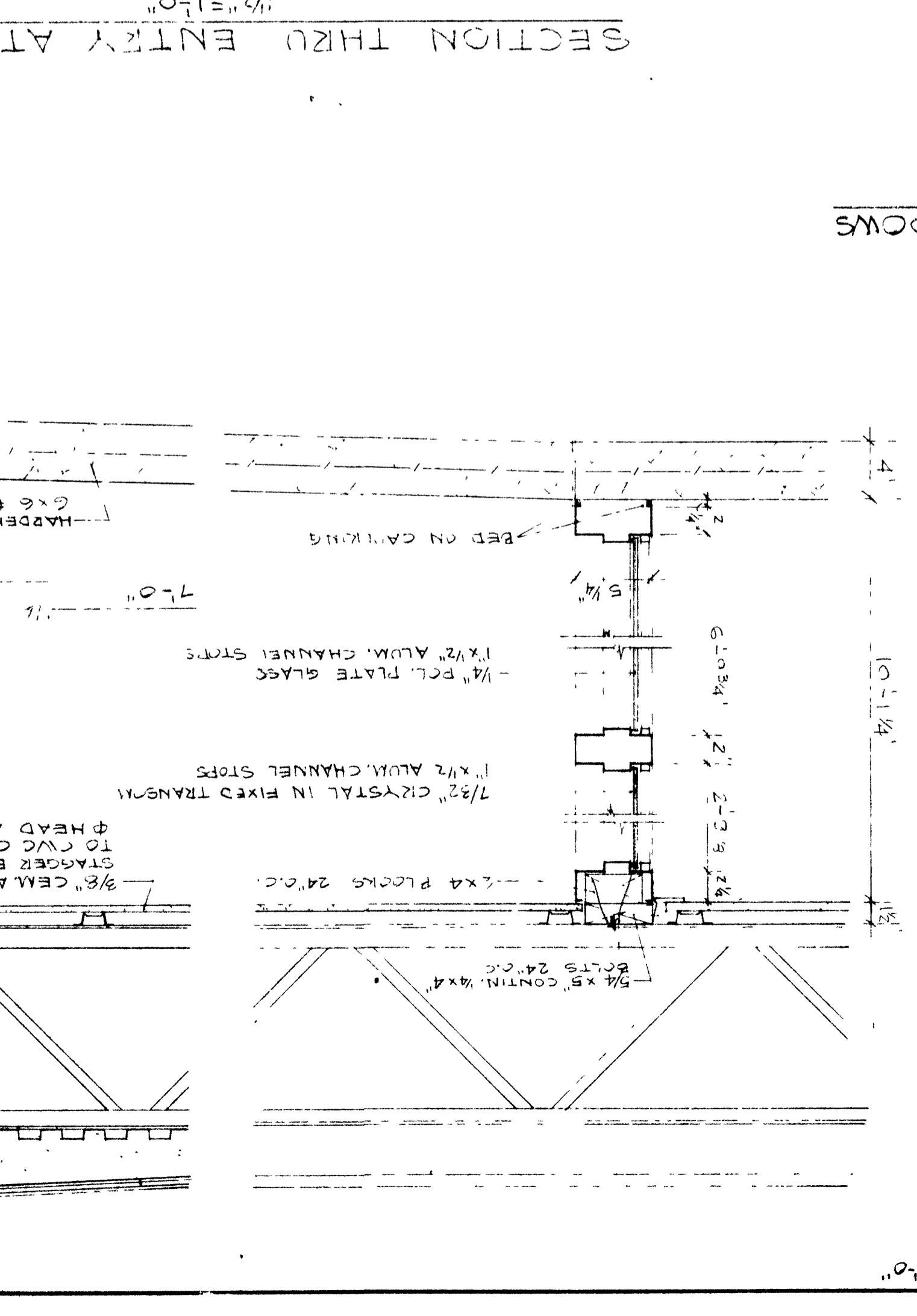
SECTION THRU ENTRY AT DOOR N° 16 # 28



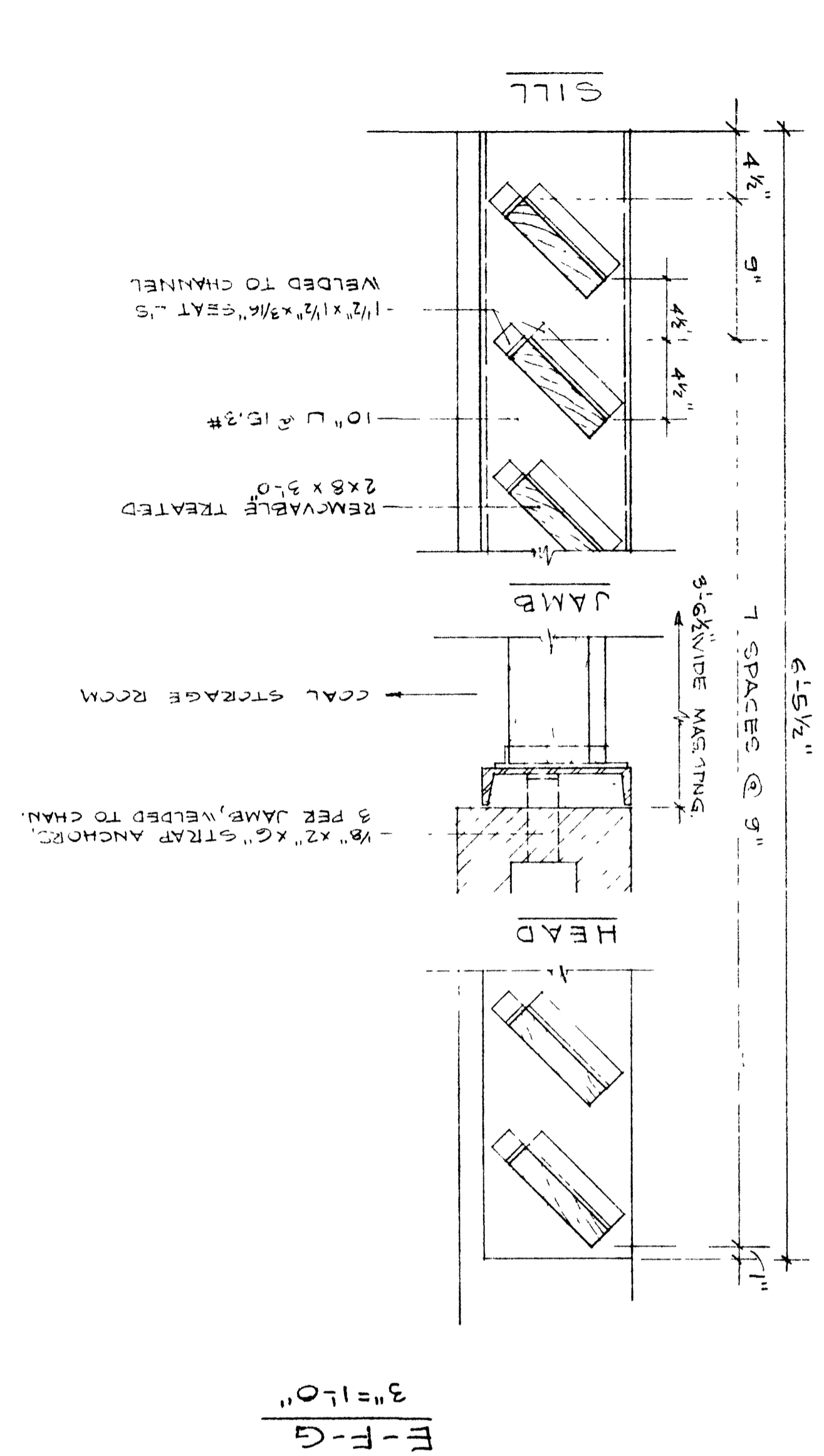
SECTION THRU BOILER RM. OVERHEAD DOOR



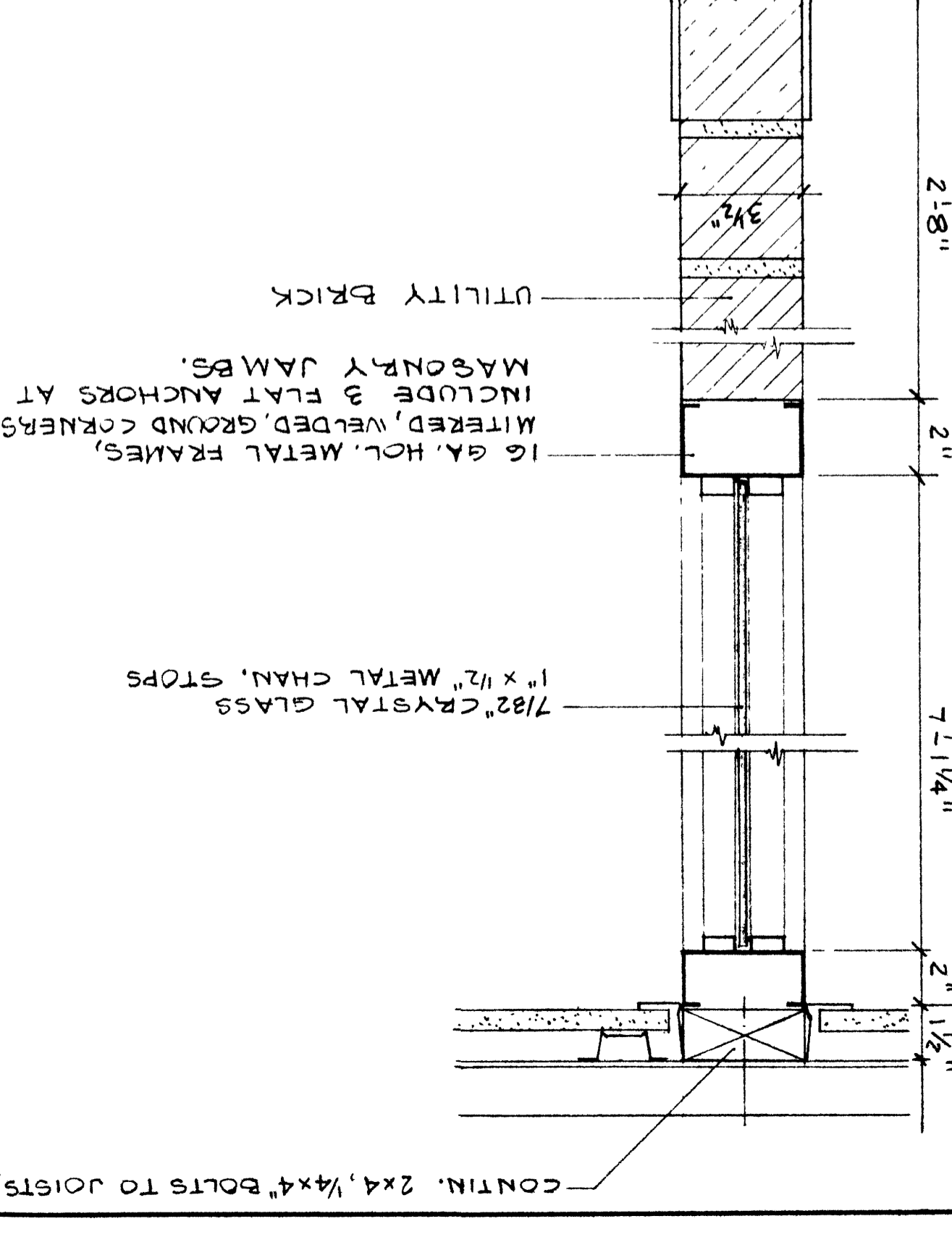
SECTION THRU FIXED INTERIOR WINDOWS



SECTION THRU COAL ROOM DOOR



SECTION THRU FIXED INTERIOR WINDOWS



WHERE LOCKERS OCCUR FRAME OPENING FOR
JALOUSIE OPENING WITH VINYL-CLAD SH. ROCK
VENT-ILE ALUM. JALOUSIE SASH NO. V-23, 2 1/2\"/>

1/2\"/>

1/2\"/>

DETAIL OF LIGHT PROOF
LOUVER FRAME DIMENSION
IS 24\"/>

1/2\"/>

1/2\"/>

5/8\"/>

1/2\"/>

1/2\"/>

3/4\"/>

1/2\"/>

1/2\"/>

3/4\"/>

1/2\"/>

1/2\"/>

1/2\"/>

1/2\"/>

1/2\"/>

1/2\"/>

1/2\"/>

1/2\"/>

1/2\"/>

1/2\"/>

1/2\"/>

1/2\"/>

1/2\"/>

1/2\"/>

1/2\"/>

1/2\"/>

1/2\"/>