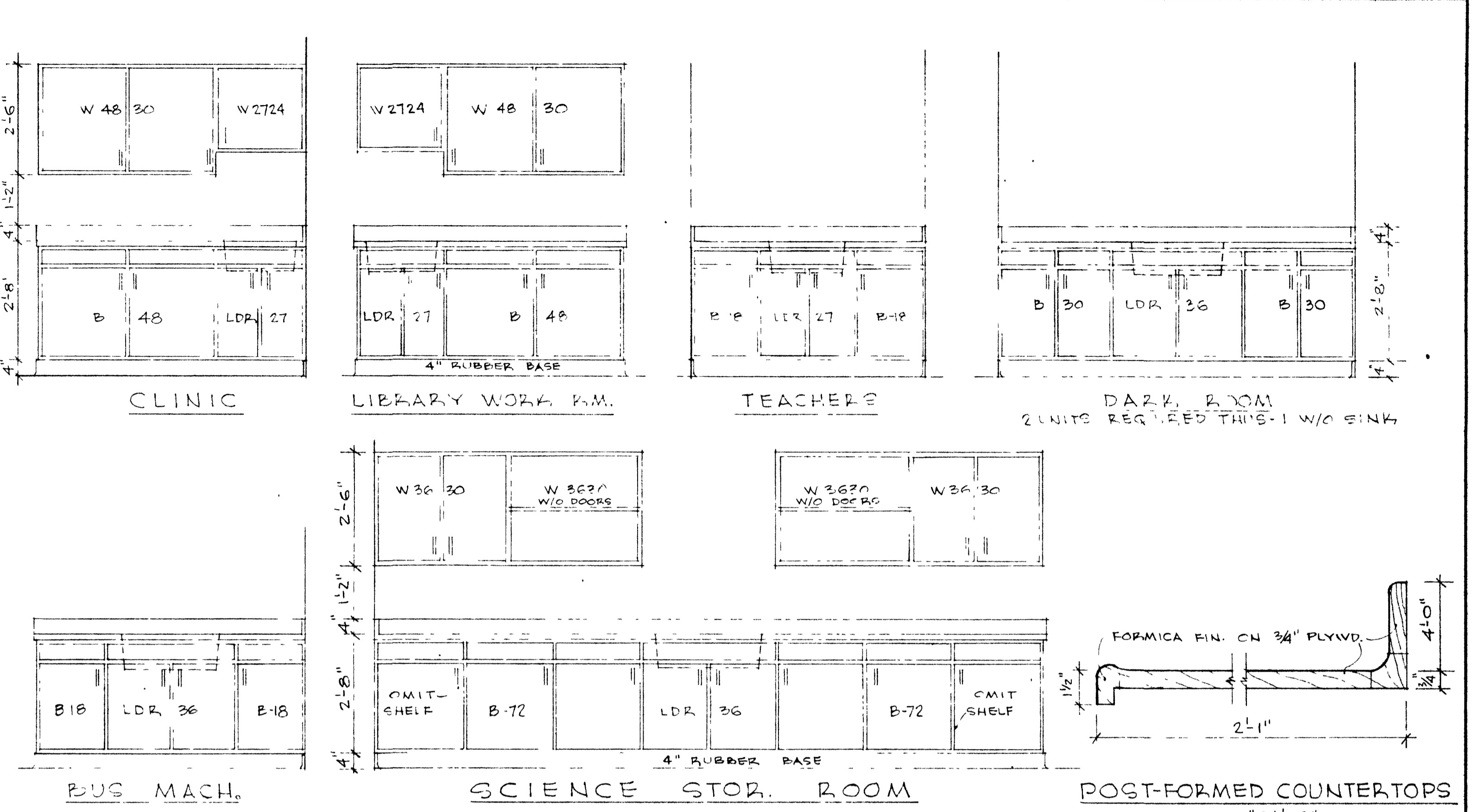
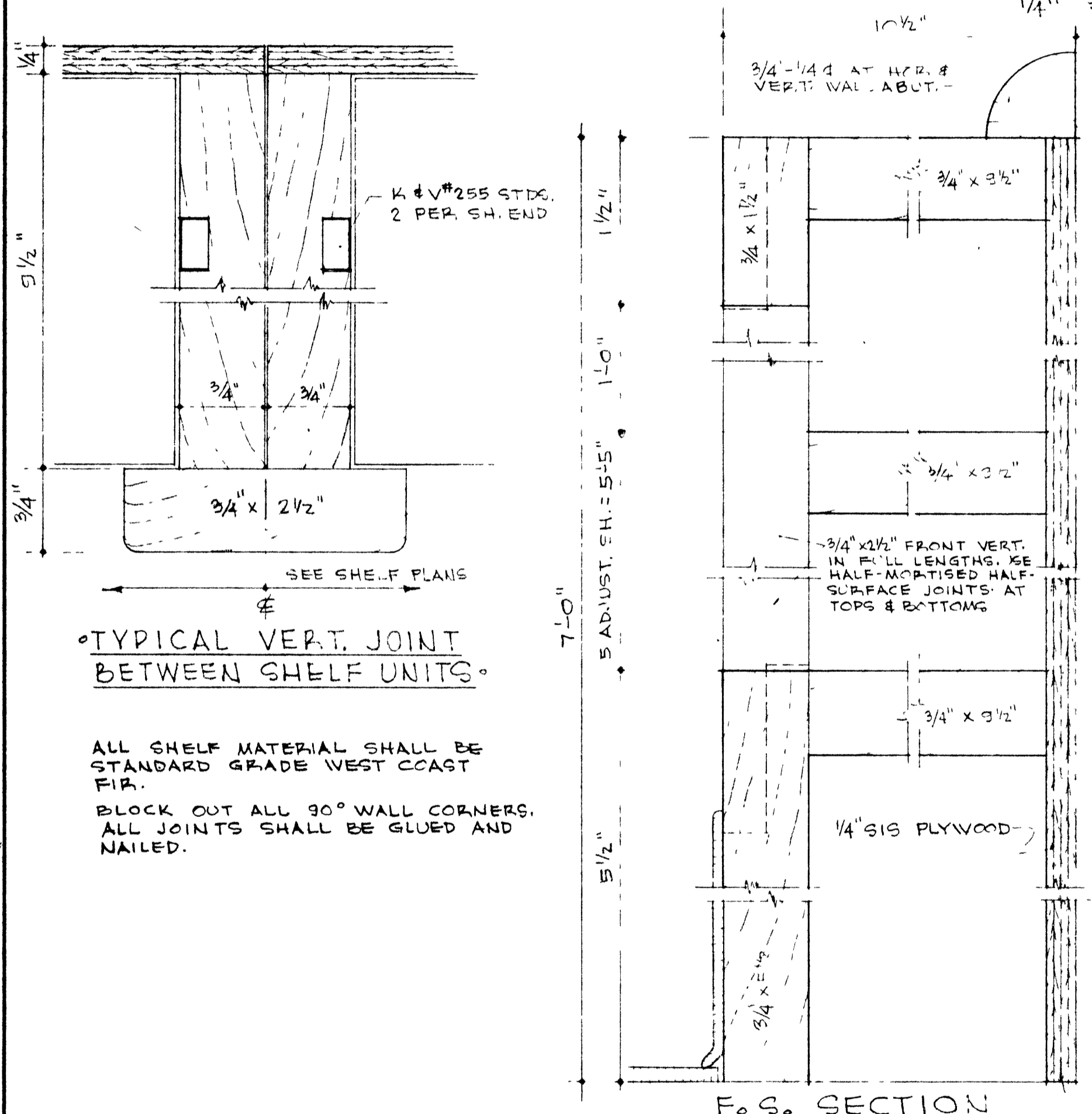


SHELVING PLANS

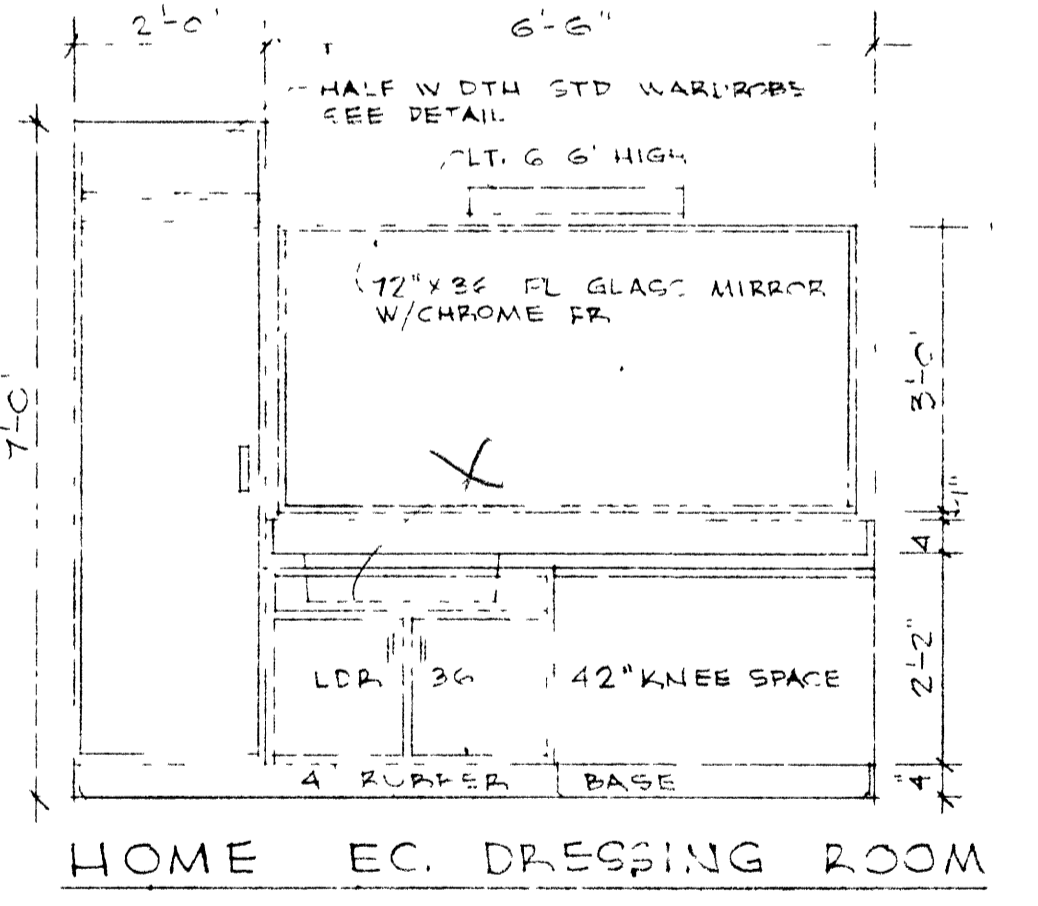


CABINET DETAILS

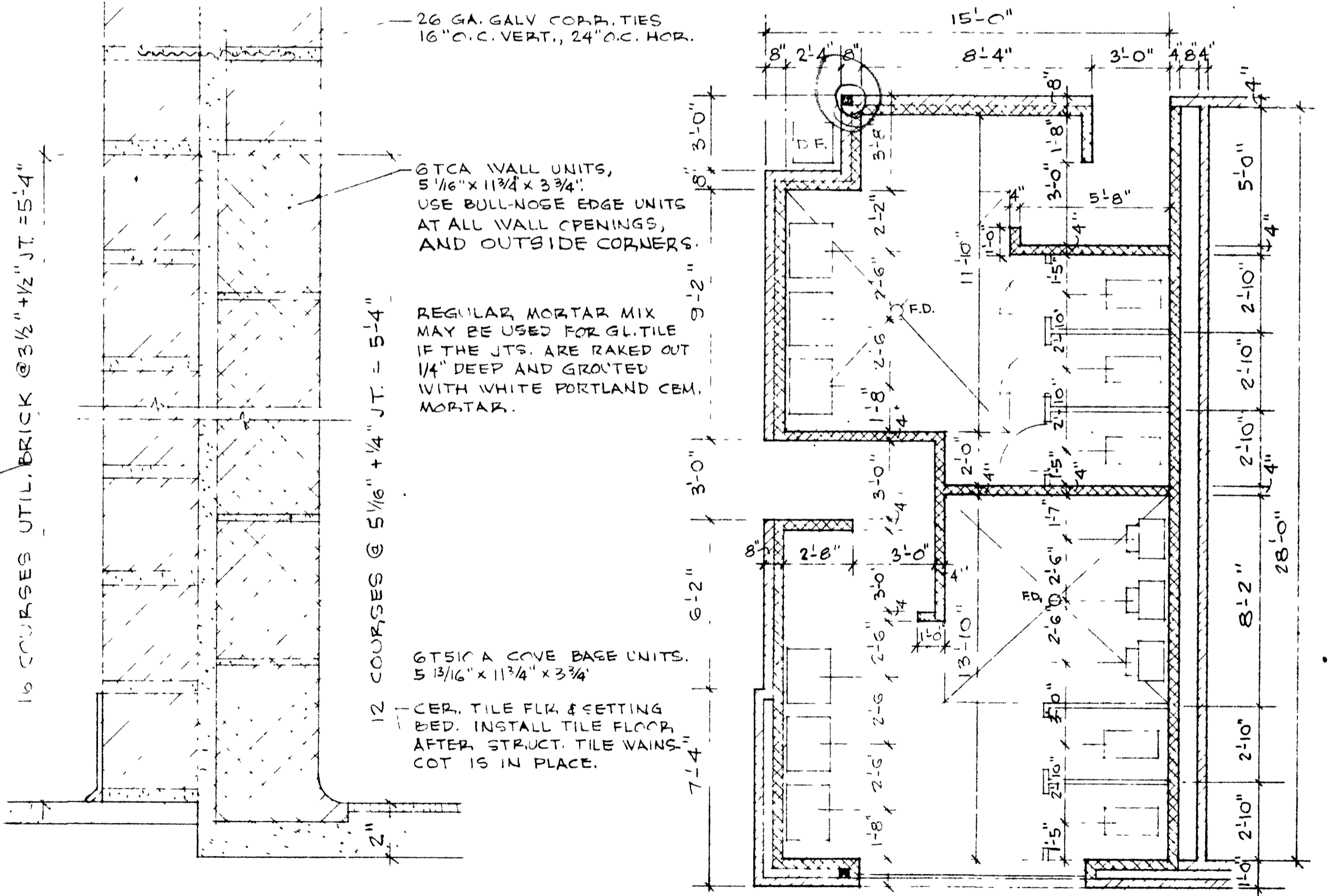
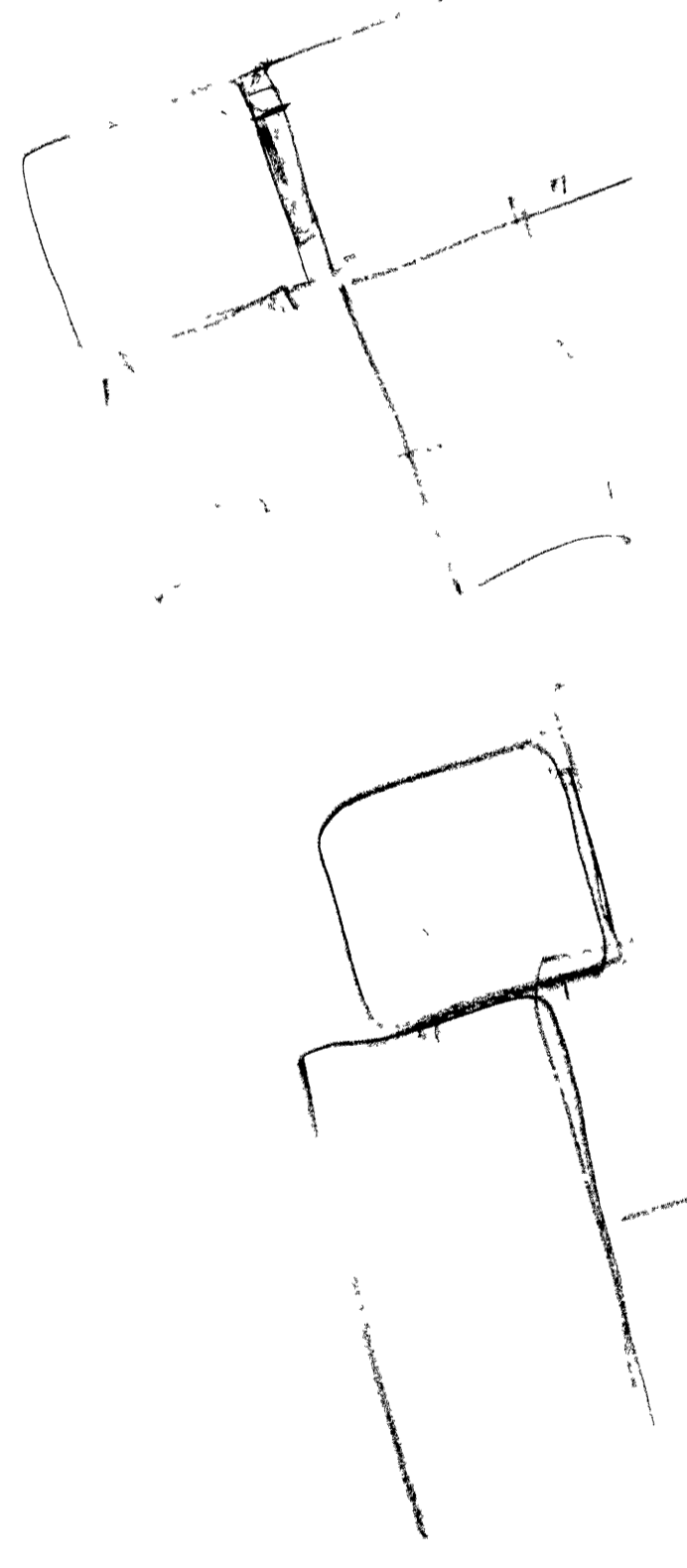
CAT. NUMBERS GIVEN ARE THOSE OF BORO CABINETS



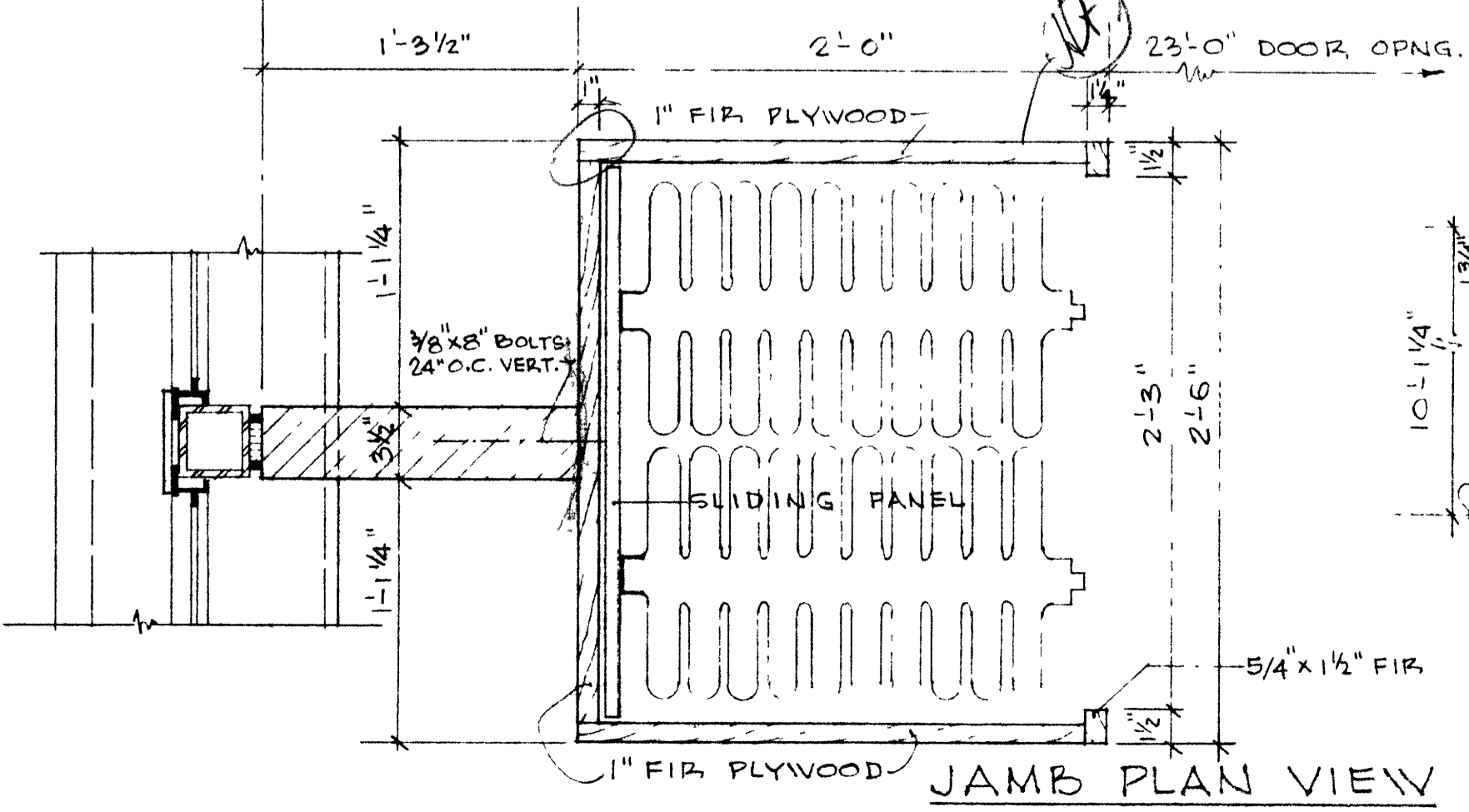
TYPICAL SHELVING DETAILS



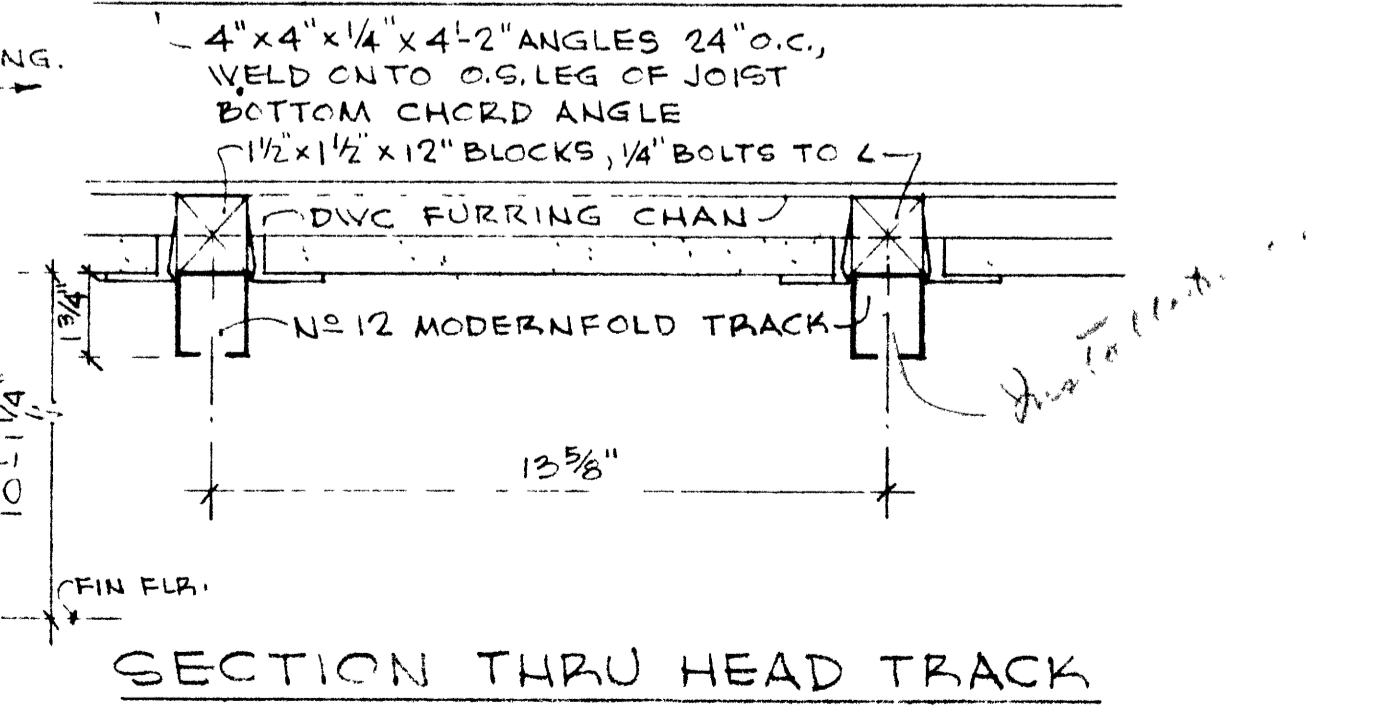
HOME EC. DRESSING ROOM



TYPICAL TOILET ROOM PLAN



JAMB PLAN VIEW



SECTION THRU HEAD TRACK

NO 24 DOUBLE FOLDING DOOR DETAILS

TYPICAL STRUCT. GL. TILE VAINSCOT

ANDREWS HIGH SCHOOL
FOR
ANDREWS BOARD OF EDUCATION
ANDREWS NORTH CAROLINA

CHIVOUS GILMER HARRILL
ARCHITECT & ENGINEER
ASHEVILLE NORTH CAROLINA

JUNE 1 1962
DRAWING NO. 7
OF DWGS.