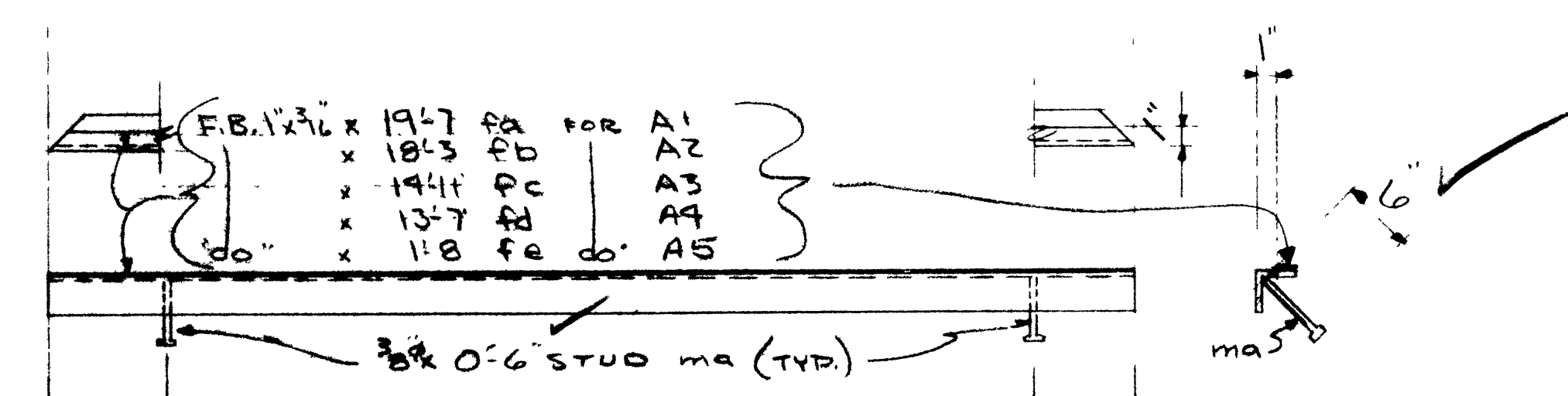


ONE / 2B1 29'-5 1/2" (SHOWN) (W12x14)
 ONE / 2B2 29'-5 1/2" (OPR.HAND) (W12x14)

ONE / 2B3 24'-1 1/2" (SHOWN) (W12x14)
 ONE / 2B4 24'-1 1/2" (OPR.HAND) (W12x14)

ONE / 2B5 15'-0" (W12x14)

INDICATE SPLICES, IF ANY



A1	1'-9 1/2"	8-SPA @ 2'-0" = 16'-0"	1'-9 1/2"
A2	1'-1 1/2"	'00"	1'-1 1/2"
A3	1'-5 1/2"	6-SPA @ 2'-0" = 12'-0"	1'-5 1/2"
A4	9 1/2"	'00"	9 1/2"
A5	4"	1'-0"	4"

ONE / 2A1 19'-7" (= 2"x2"x4")
 ONE / 2A2 18'-3" ('00")
 ONE / 2A3 14'-11" ('00")
 ONE / 2A4 13'-7" ('00")
 2 / 2A5 1'-8" ('00")

ITEM NO.	PIECES SHIPPED		PIECES FABRICATED				REMARKS	WEIGHTS
	NO. PCS.	DATE	MARK	NO. PCS.	SIZE	LENGTH		
1			ZB1	ONE	W12x14	29'-5 1/2"		
2			ZB2	ONE	W12x14	29'-5 1/2"		
3			ZB3	ONE	W12x14	24'-1 1/2"		
4			CA	ONE	CBx11.5	25'-10 1/2"		
5			ZB4	ONE	W12x14	24'-1 1/2"		
6			CA	ONE	CBx11.5	25'-10 1/2"		
7			ZB5	ONE	W12x14	15'-0"		
8			CD	ONE	CBx11.5	15'-0"		
9			ZA1	ONE	2"x2"x4"	19'-7"		
10			ma	9	2"x2"x4"	0'-6"		
11			Fa	ONE	FB-1"x7/16"	19'-7"		
12			ZA2	ONE	2"x2"x4"	18'-3"		
13			ma	9	2"x2"x4"	0'-6"		
14			Fb	ONE	FB-1"x7/16"	18'-3"		
15			ZA3	ONE	2"x2"x4"	14'-11"		
16			ma	7	2"x2"x4"	0'-6"		
17			Fc	ONE	FB-1"x7/16"	14'-11"		TRENCH FRAME
18			ZA4	ONE	2"x2"x4"	13'-7"		
19			ma	7	2"x2"x4"	0'-6"		
20			Fd	ONE	FB-1"x7/16"	13'-7"		
21			ZA5	2	2"x2"x4"	1'-8"		
22			ma	2	2"x2"x4"	0'-6"		
23			Fc	2	FB-2"x2 1/4"	1'-8"		
24			ZP1	ONE	CHDR 1"x7/16"	19'-7"		NO FAB
25			ZP2	ONE	'00"	13'-7"		FAB
26								CONTR. VERIFY W/ ARCHITECT

THIS DRAWING IS:
 APPROVED
 APPROVED AS NOTED
 RETURNED FOR CORRECTION
 RESUBMIT

RESUBMIT FOR APPROVAL

APPROVAL IS FOR COMPLIANCE WITH CONTRACT DOCUMENTS ONLY. CONTRACTOR IS RESPONSIBLE FOR FABRICATION AND COORDINATION OF THE WORK.
 BY: BOWEN & FEINBERG ASSOCIATES DATE 11-18-76
 BOWEN & FEINBERG ASSOCIATES CONSULTING ENGINEERS

SHOP NOTE:
 SEE SHEET F-1 FOR SECTION: A-A

WE ASSUME NO RESPONSIBILITY FOR ERRORS WHEN MATERIAL IS FABRICATED IN ACCORDANCE WITH APPROVED DRAWING.

BACKCHARGES WILL NOT BE ACCEPTED UNLESS OUR CONSENT IS GIVEN IN ADVANCE IN WRITING.

TRACO STEEL INC. SANDY SPRINGS, S.C. 29677	
PROJECT: <u>ANDREWS JR. HIGH ADDITION</u>	DATE: _____
LOCATION: <u>ANDREWS, N.C.</u>	REVISED: _____
DWG. COVERS: <u>BEAMS</u>	APPROVAL: _____
ARCHT. OR ENGR.: <u>ERIC TOWNSON</u>	FIELD USE: _____
CONTRACTOR: <u>BUNCOMBE CONSTR.</u>	SHOP: _____
SHOP PAINT: _____	HOLE SIZE: _____
TT-P-86E	
DRWN. BY: <u>W.S.T.</u>	JOB NO. _____
CHK. BY: _____	DATE: <u>9-1(0) F-2</u>