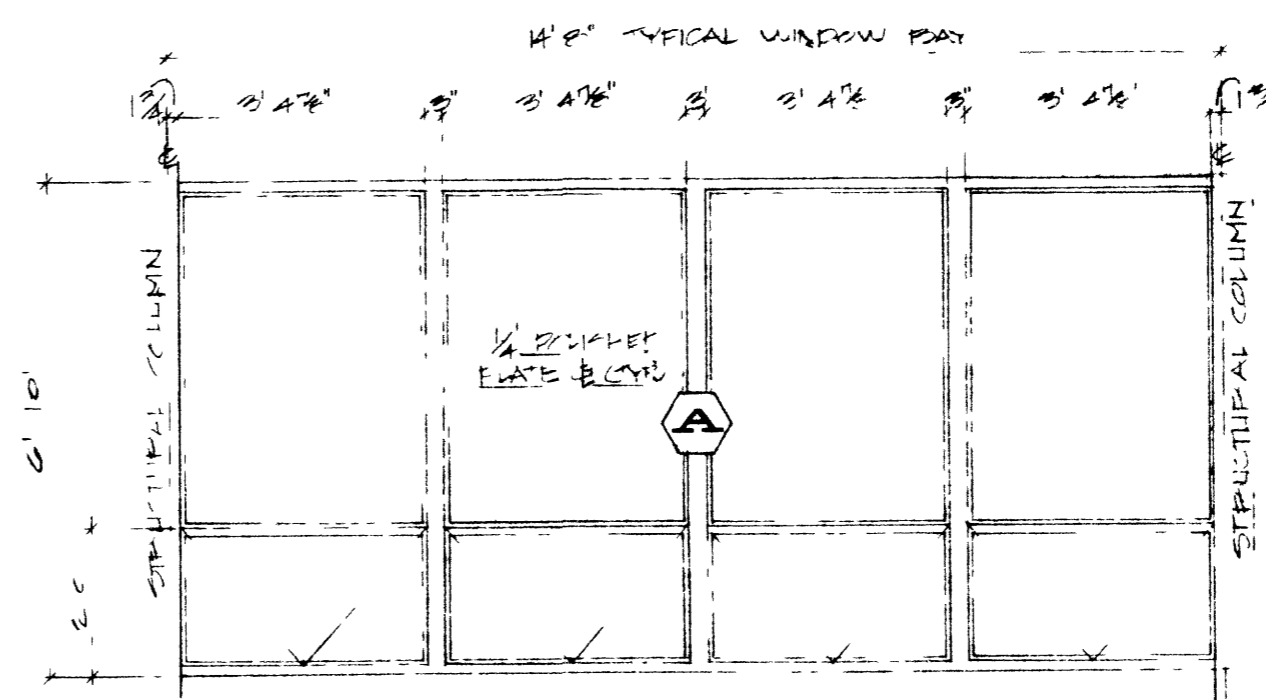


**DOOR SCHEDULE**

no.	type	size	buck	thold	lintel	h'w'r	remarks
1		3'-0" x 7'-0" x 1 3/4"	A			10	
2		3'-0" x 7'-0" x 1 3/4"	DO		DO	10	
3		3'-0" x 7'-0" x 1 3/4"	DO		DO	10	
4		3'-0" x 7'-0" x 1 3/4"	DO		DO	10	
5	EXISTING DOORS IN OLD BUILDING						REMOVE EXISTING DOORS & FRAME & LOCATE IN NEW CONST (SEE FL PLAN)

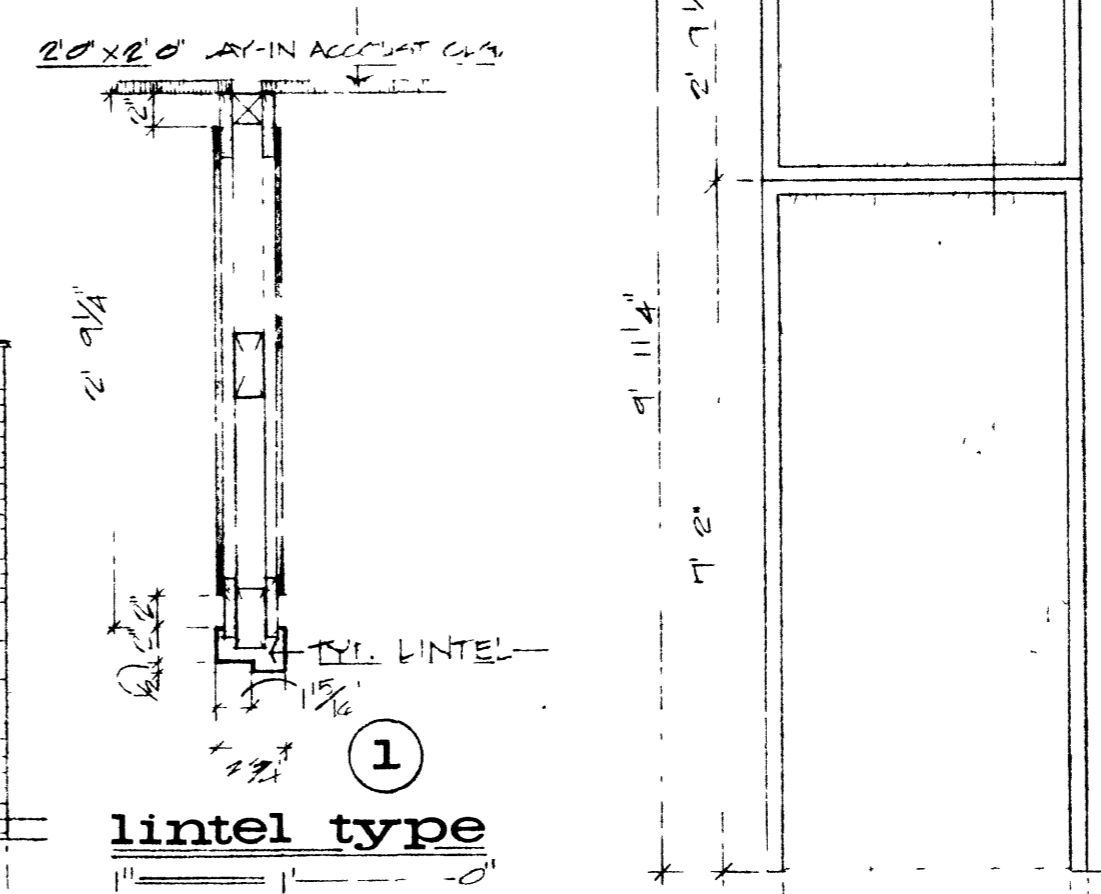
**FINISH SCHEDULE**

space	floor	base	wall	ceil'g	remark
101 CLASSROOM	V.A. TILE	4" VINYL	EXPOSED BRICK	LAY-IN ACOUSTICAL	
102 CLASSROOM	DO	DO	DO	DO	
103 CORRIDOR	DO	DO	DO	DO	
104 CLASSROOM	DO	DO	DO	DO	
105 CLASSROOM	DO	DO	DO	DO	



**WINDOW SCHED.**

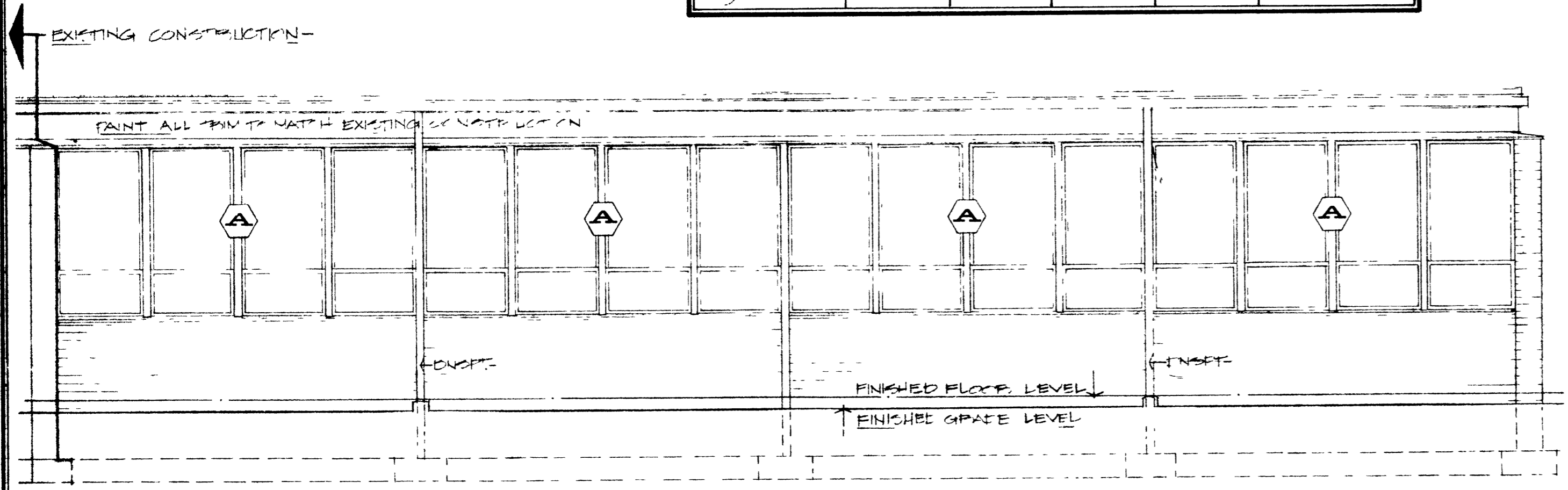
**door frame details**



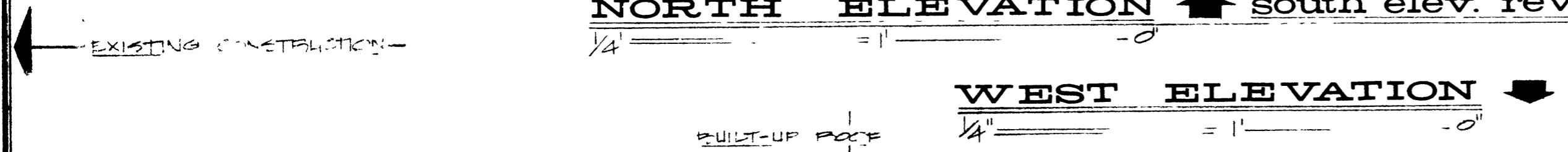
**lintel type 1**

**door type 1**

**buck type A**



**NORTH ELEVATION** ↑ south elev. reverse of above



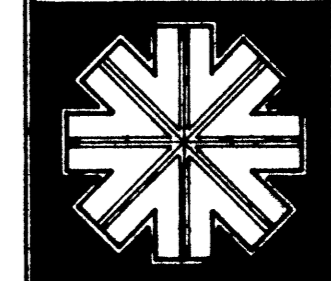
**WEST ELEVATION** ↓

200 1420

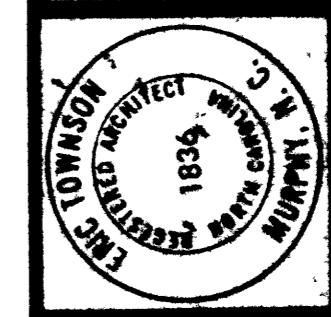
JUL 30 1975  
DIVISION OF  
SCHOOL PLANNING

**ANDREWS JR. HIGH**

**ERIC TOWNSON, A.I.A.**  
architect - murphy, n.c.



EDUCATIONAL UNIT  
for the Cherokee County  
Board of Education  
Cherokee county, n.c.



DATE  
JUNE 1, 1975  
DRAWN  
MARK ALSTIN  
REVISED

sheet  
number  
**C-2**  
of 3