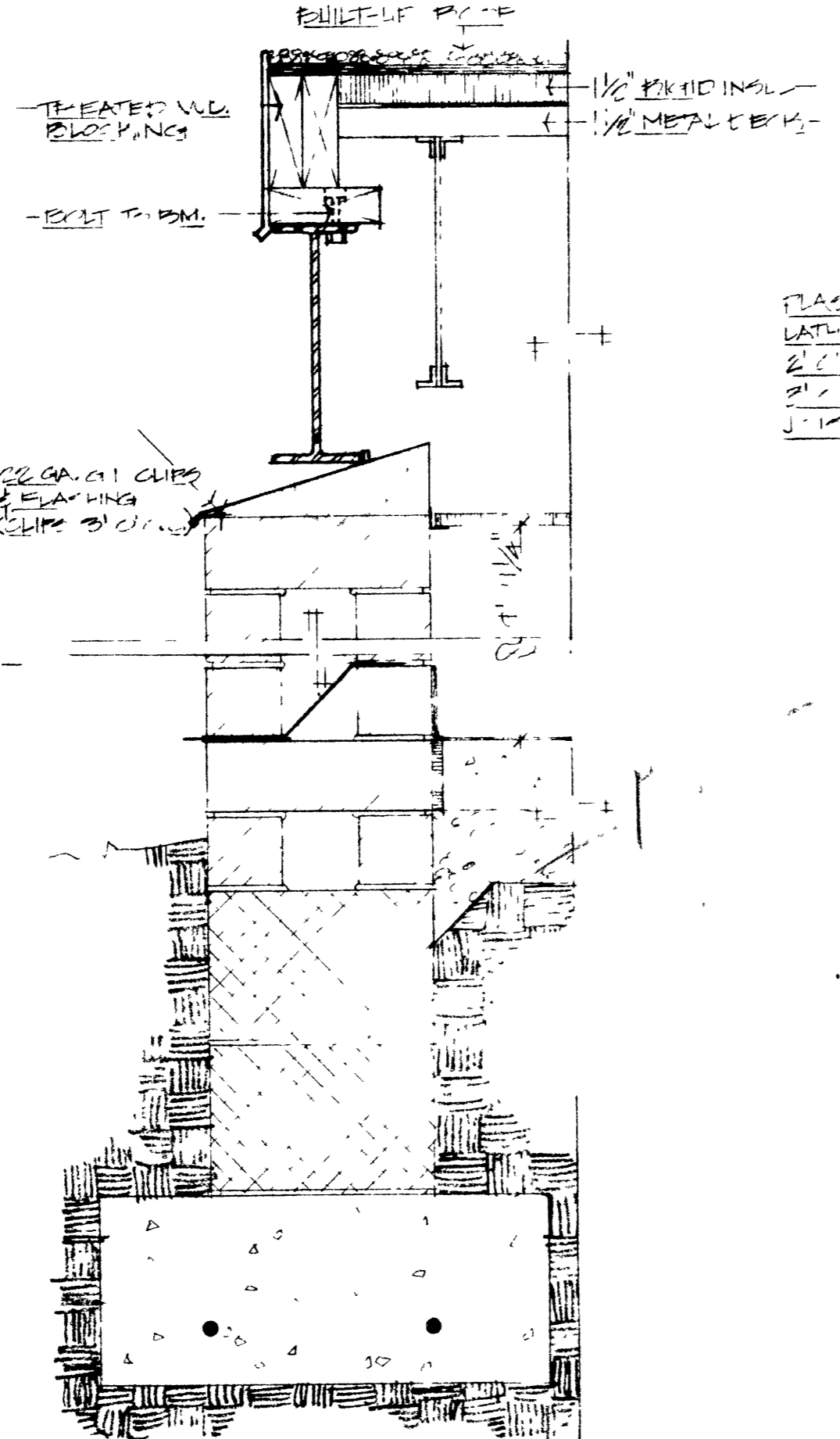
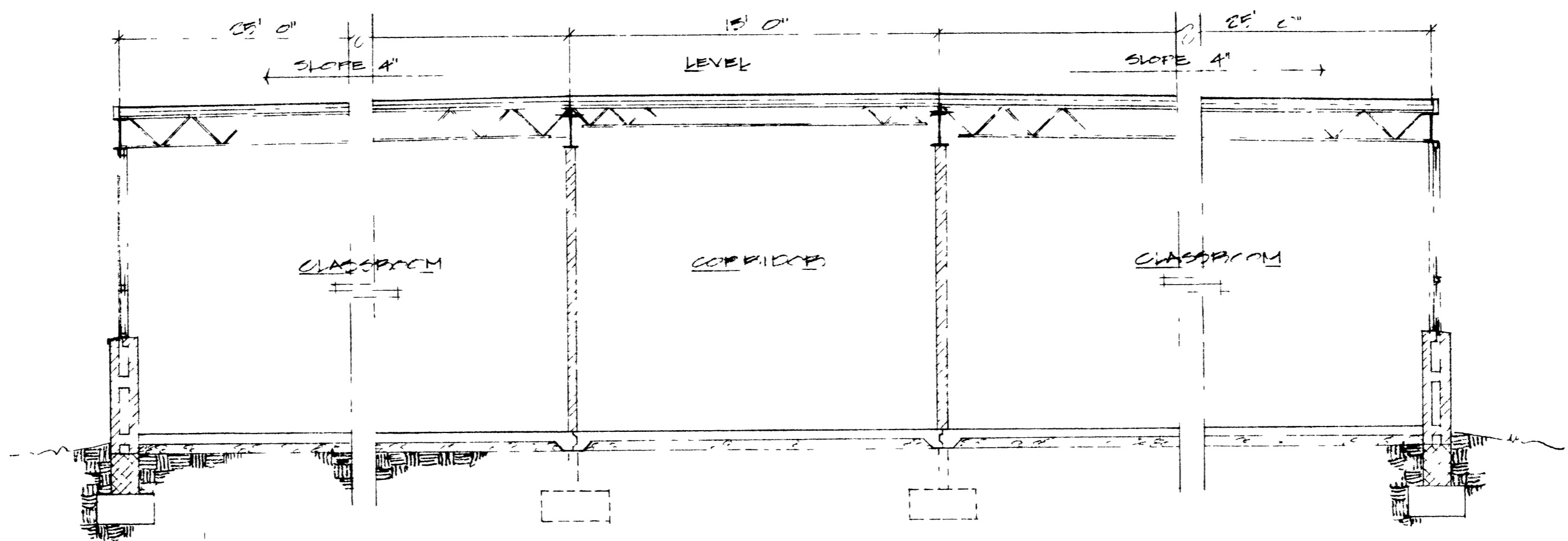
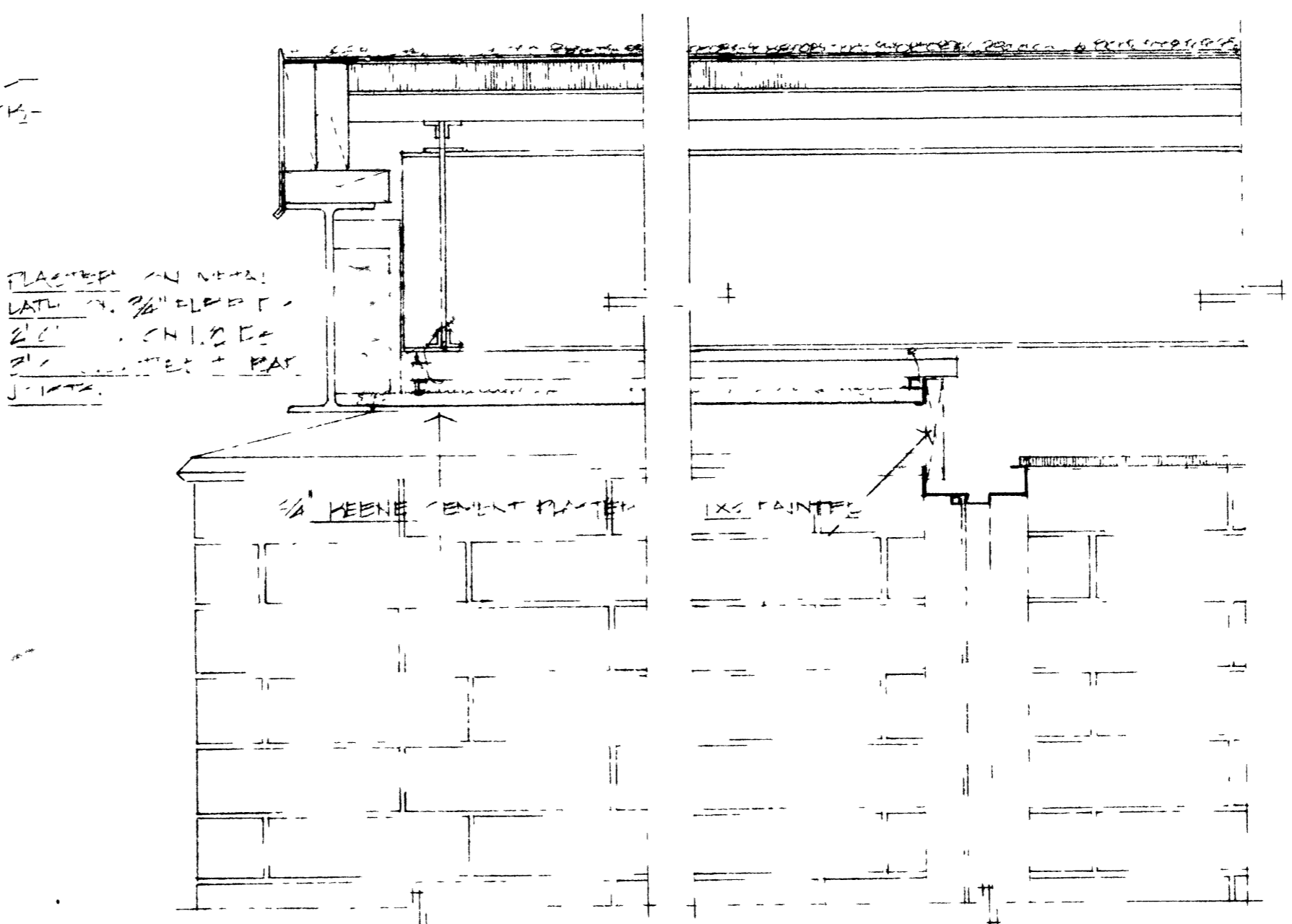


SECTION B  
1/2" = 1'-0" C-1

SECTION A  
1/2" = 1'-0" C-1

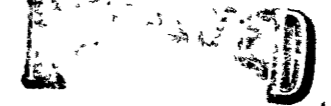


SECTION C  
1/2" = 1'-0" C-1



SECTION D  
1/2" = 1'-0" C-1

200 1420

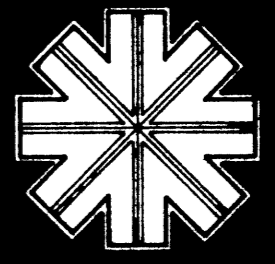


JUL 30 1975

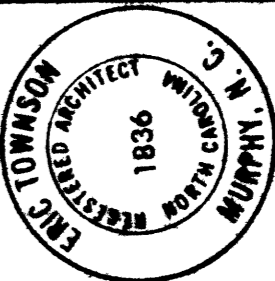
DIVISION OF SCHOOL PLANNING

ANDREWS JR. HIGH

ERIC TOWNSON, A.I.A.  
architect - murphy, n.c.



EDUCATIONAL UNIT  
for the Cherokee County  
Board of Education  
Cherokee County, n. c.



DATE  
JUNE 1, 1975  
DRAWN  
JACK WING  
REVISED

sheet number

C-3

of 3