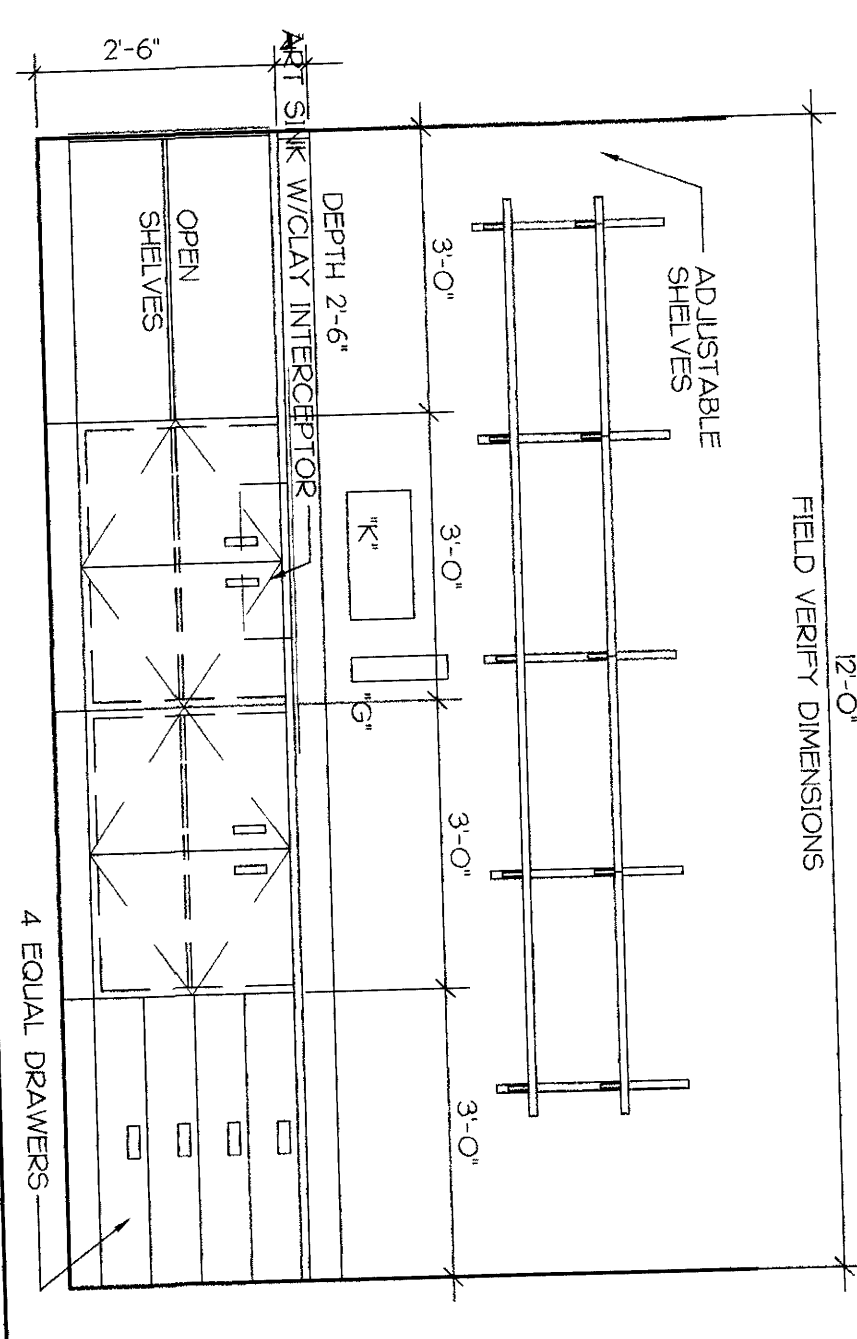
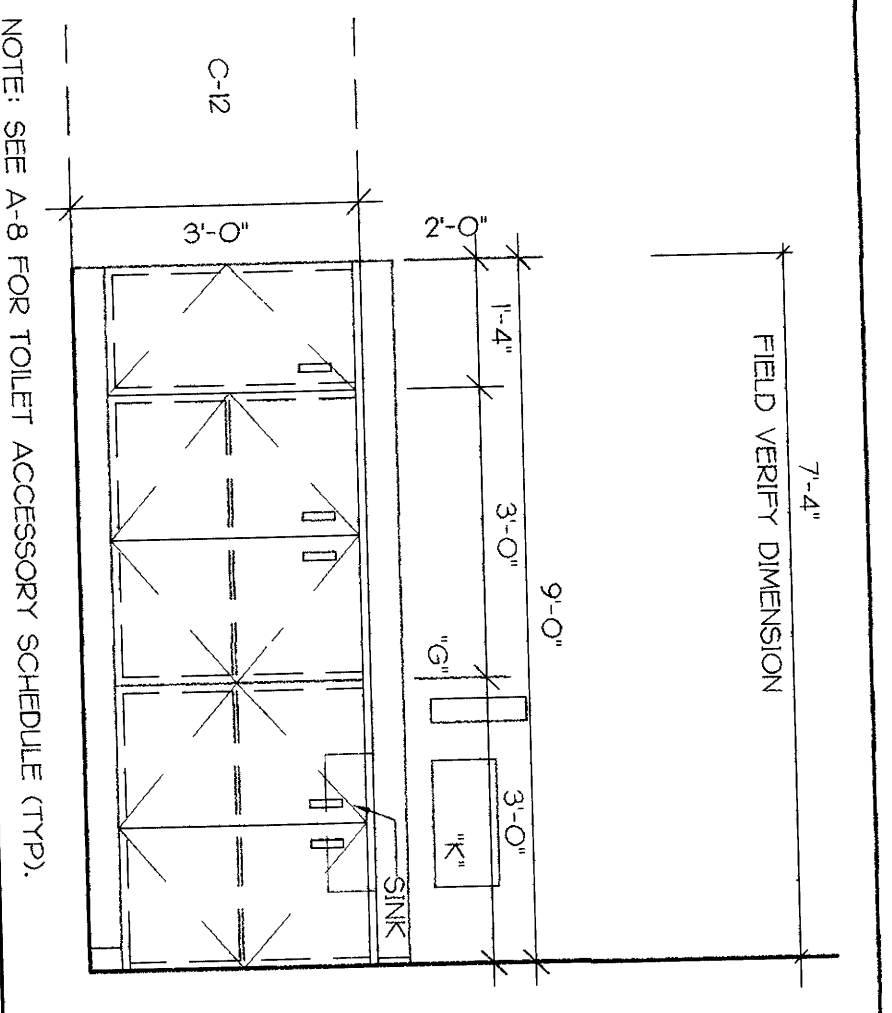


**1 CASEWORK C-1**  
1/2" = 1'-0"  
ROOMS PRINCIPAL, GUIDANCE CLASSROOMS, ETC.

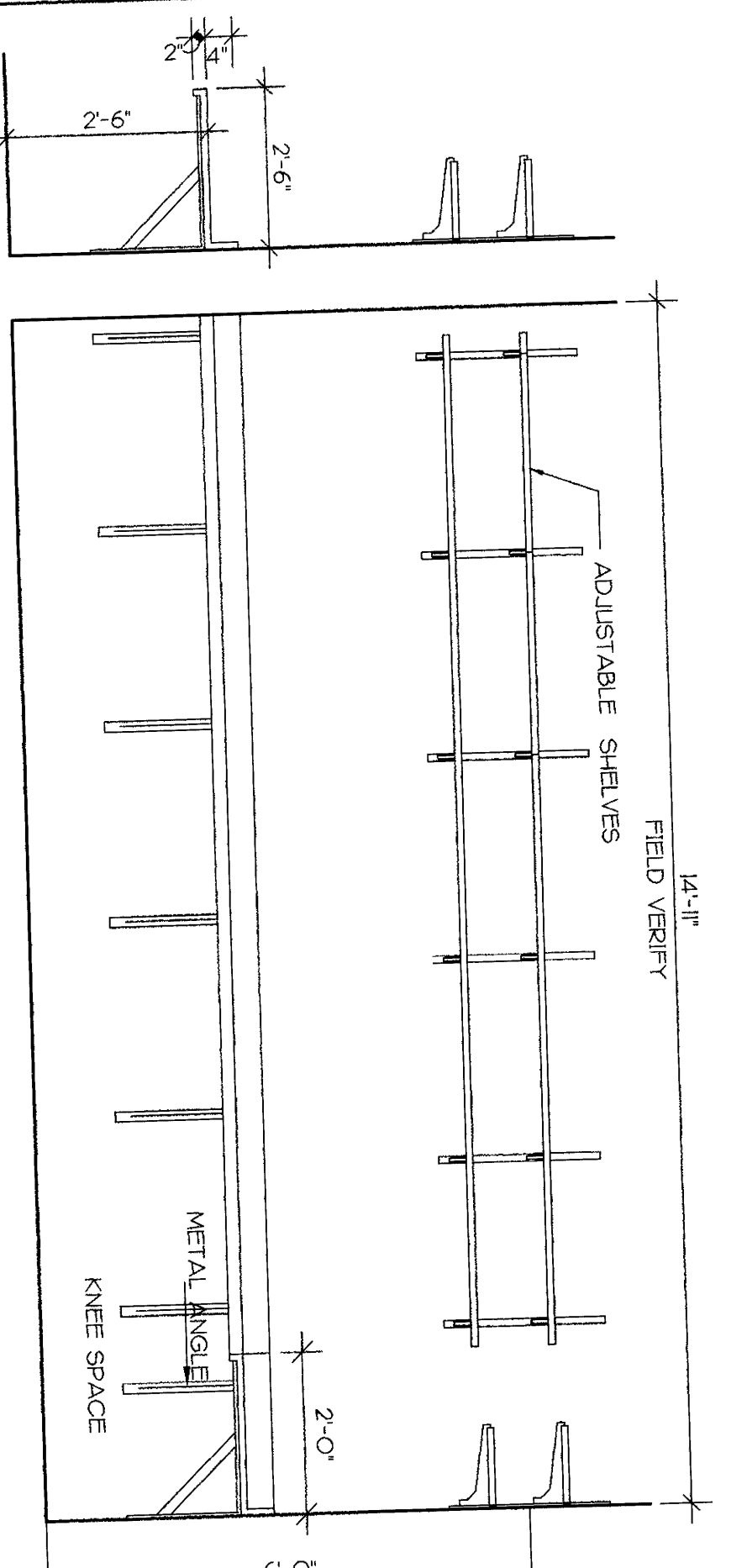


**4 CASEWORK C-4**  
1/2" = 1'-0"  
TEACHERS TEAM ROOM

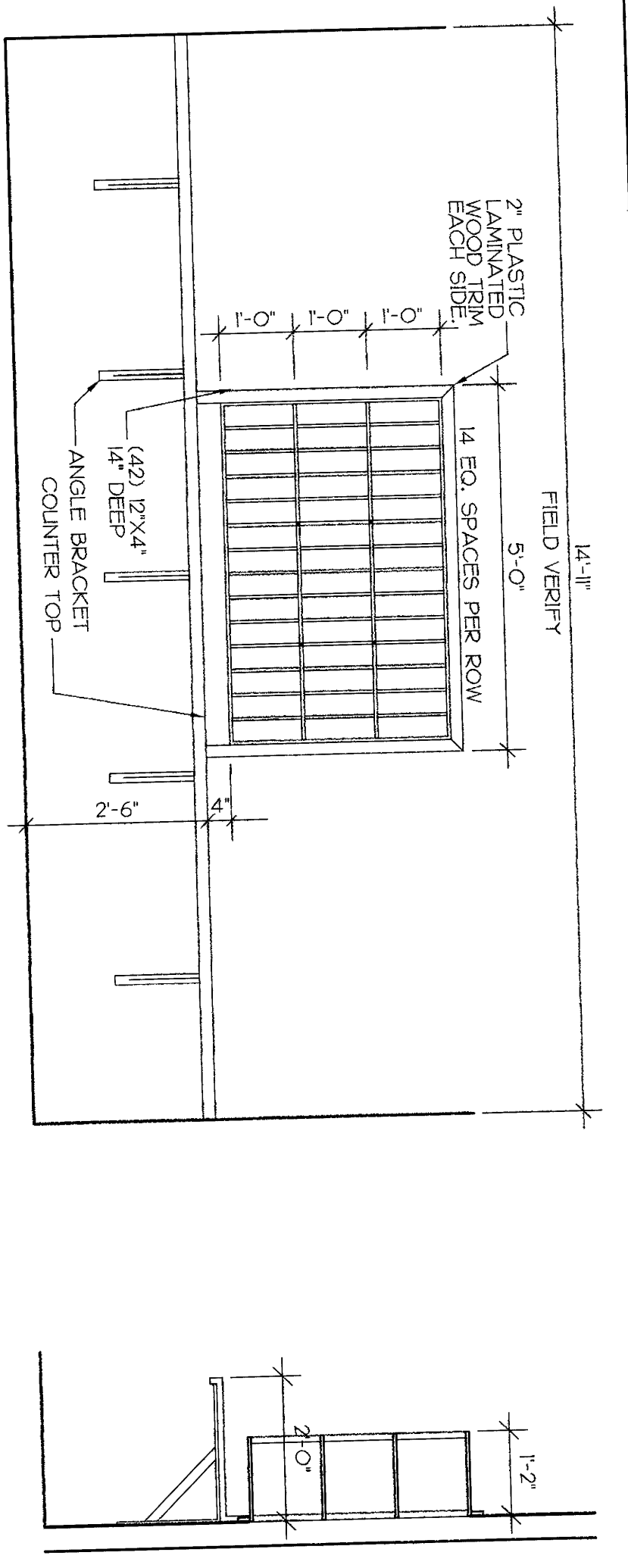


NOTE: SEE A-B FOR TOILET ACCESSORY SCHEDULE (TTP).

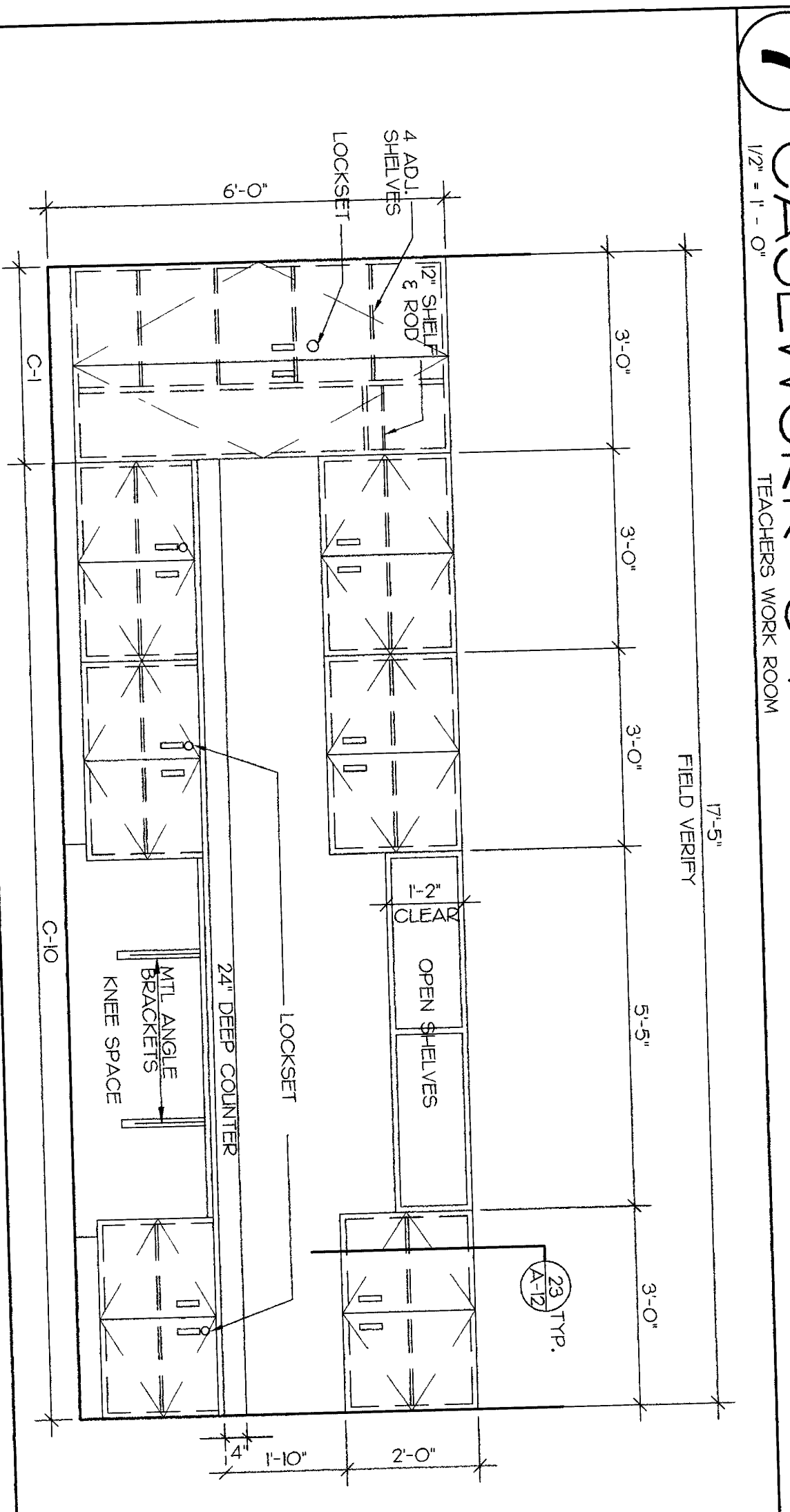
**5 CASEWORK C-5**  
1/2" = 1'-0"  
MUSIC/ART ROOM



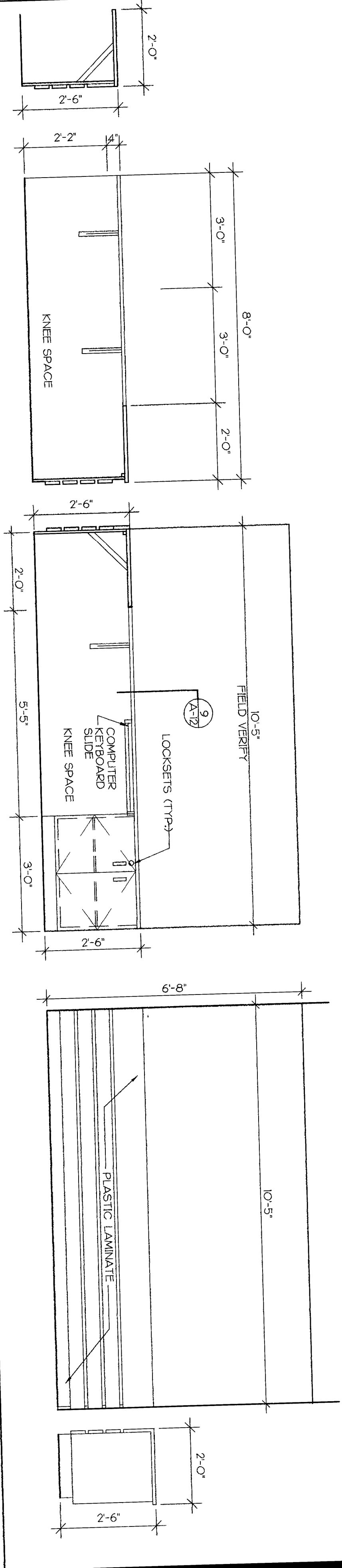
**8 CASEWORK C-8**  
1/2" = 1'-0"  
WORKROOM



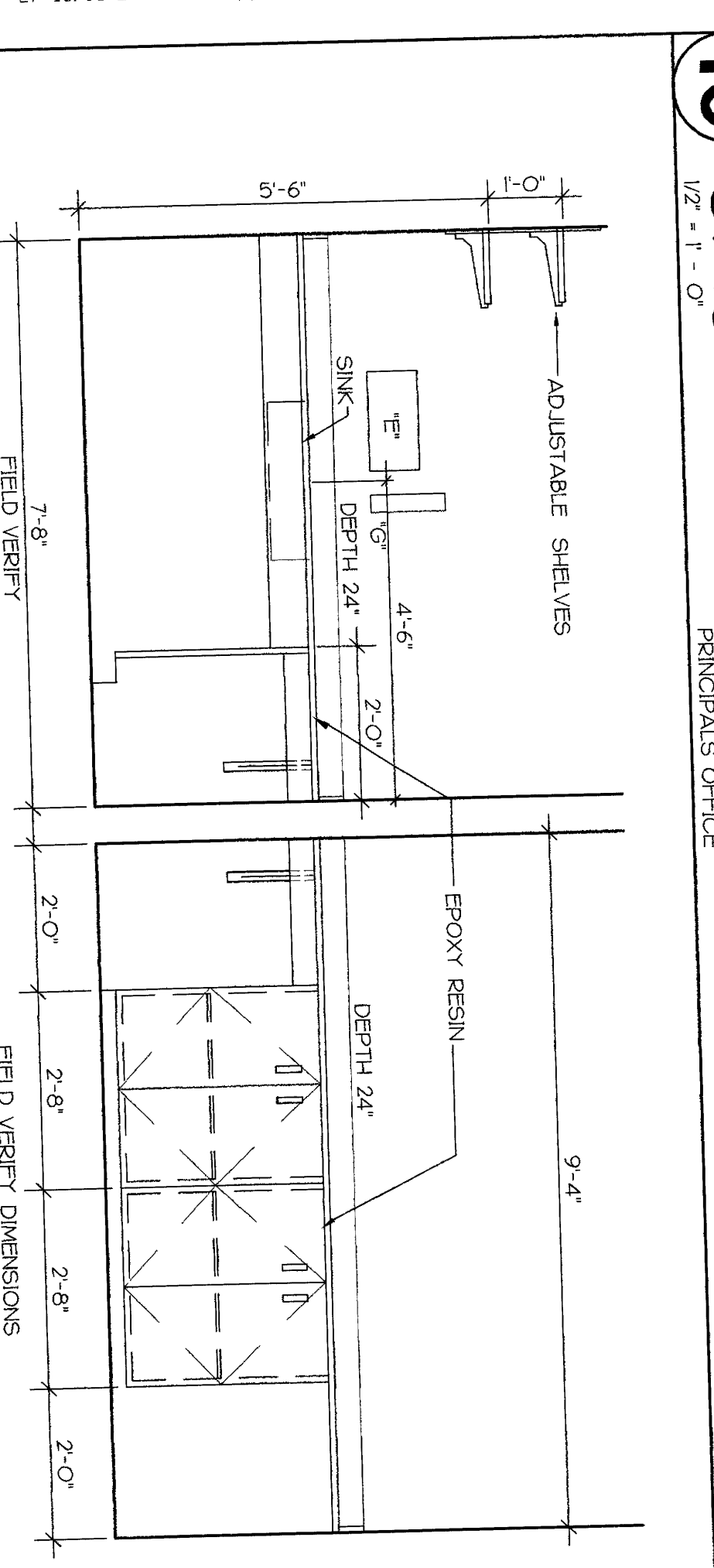
**7 CASEWORK C-7**  
1/2" = 1'-0"  
TEACHERS WORK ROOM



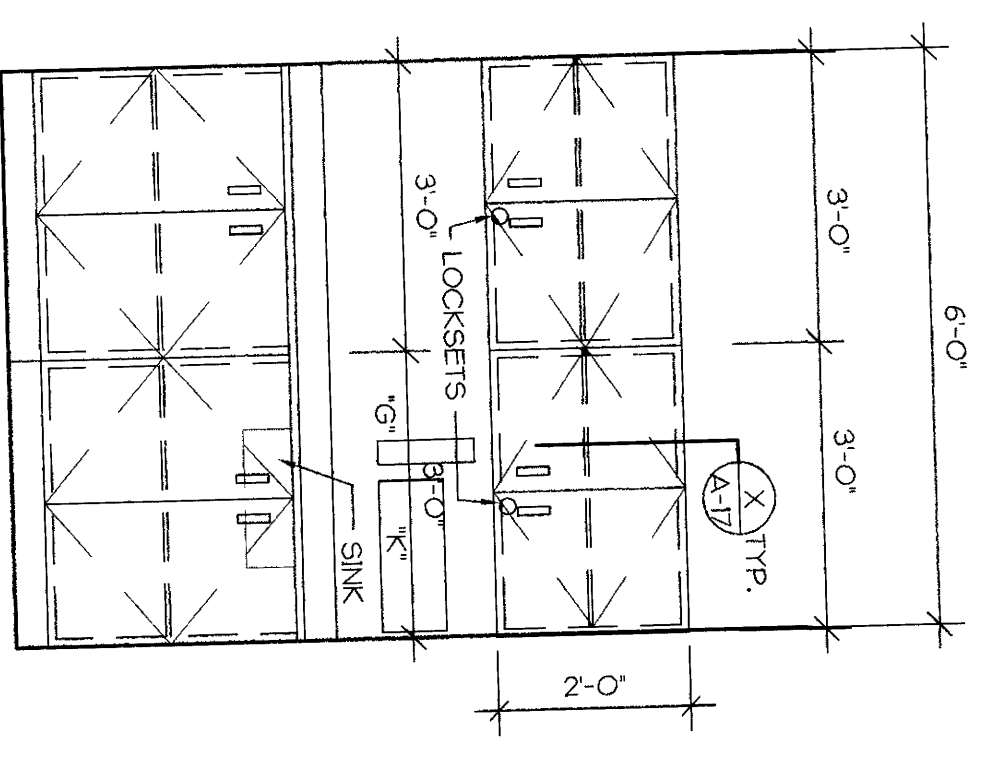
**9 CASEWORK C-9**  
1/2" = 1'-0"  
RECEPTION DESK



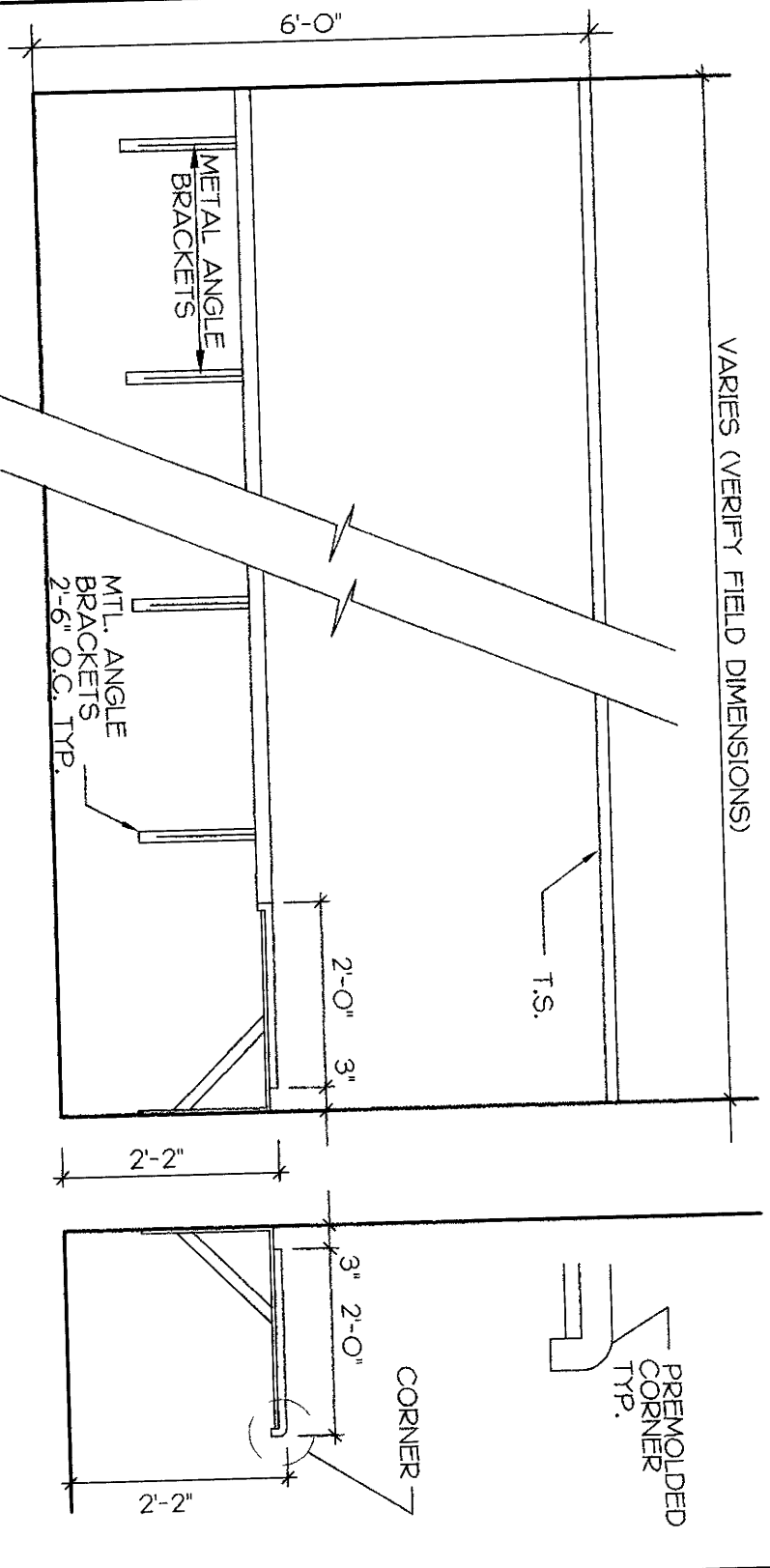
**10 CASEWORK C-10**  
1/2" = 1'-0"  
PRINCIPALS OFFICE



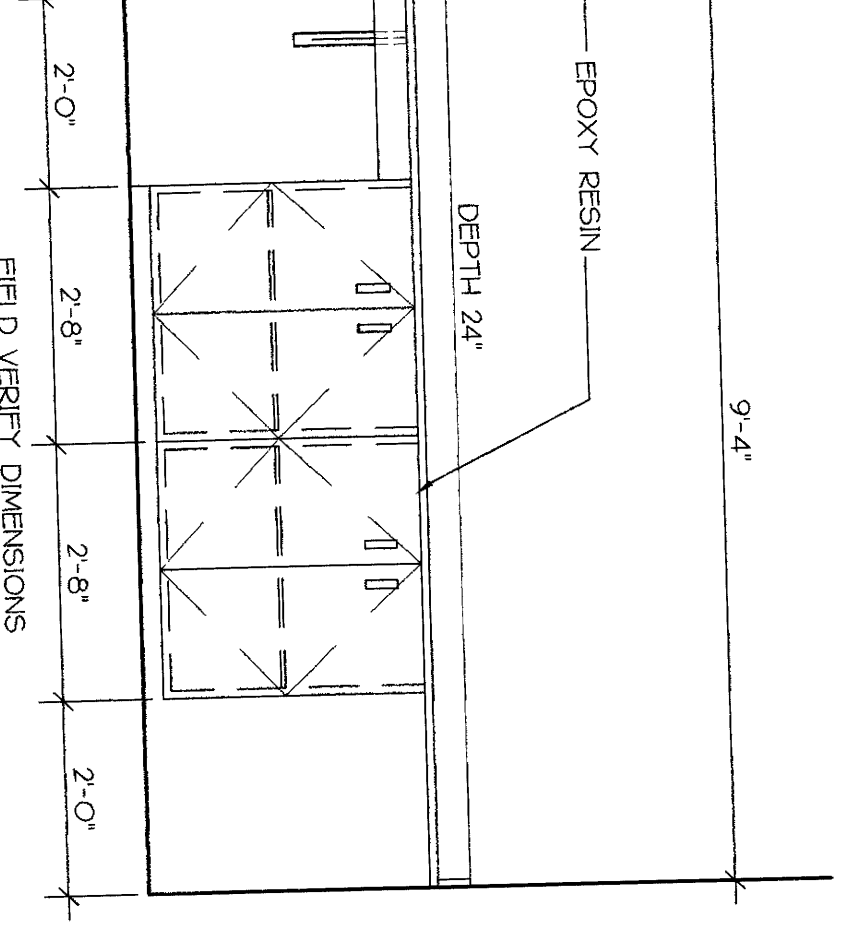
**11 CASEWORK C-11**  
1/2" = 1'-0"  
HEALTH



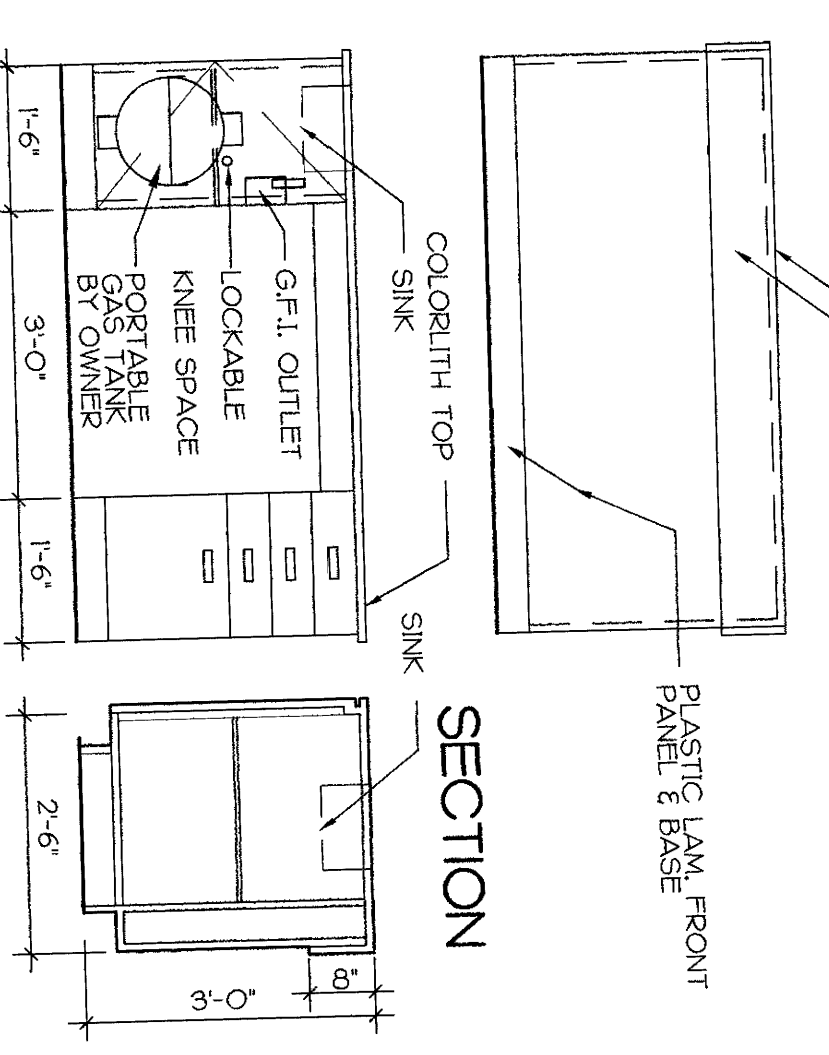
**12 CASEWORK C-12**  
1/2" = 1'-0"  
COMPUTER ROOM, MEDIA CENTER



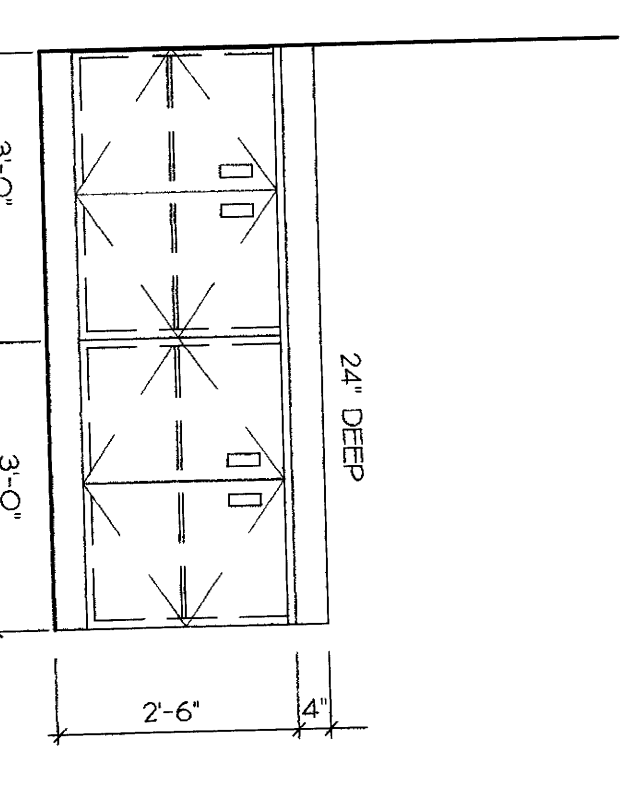
**14 CASEWORK C-14**  
1/2" = 1'-0"  
PREP ROOM



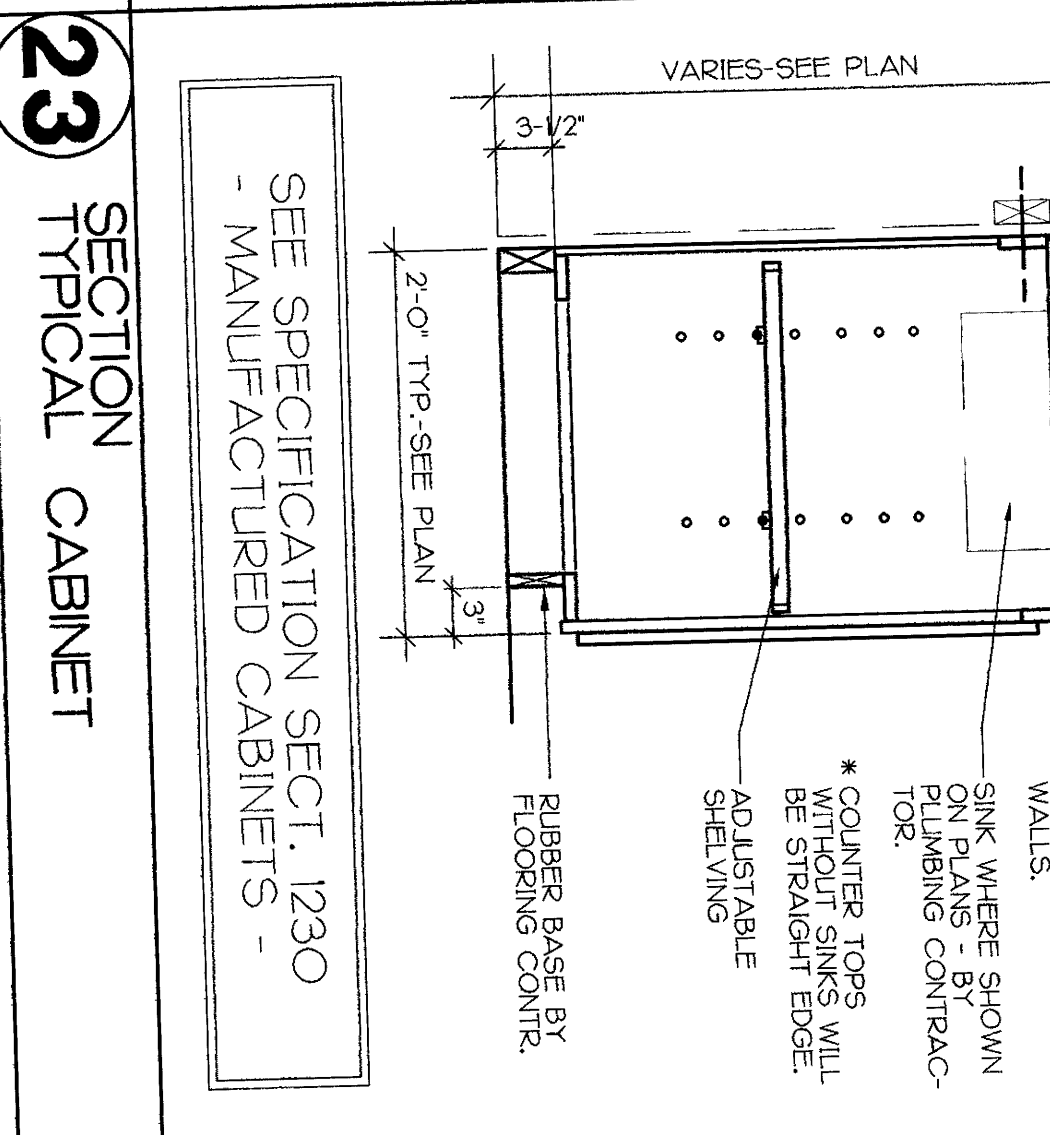
**15 CASEWORK C-15**  
1/2" = 1'-0"  
SCIENCE DISPLAY



**19 CASEWORK C-19**  
1/2" = 1'-0"  
NOT USED



**GENERAL NOTES:**  
 1. SEE FLOOR PLANS FOR OPPOSITE HAND  
 2. VERIFY ALL DIMENSIONS ON SITE  
 3. VERIFY SINKS WILL BE 12" W UNLESS NOTED OTHERWISE ON PLANS  
 4. SEE FLOOR PLANS FOR COUNTER WIDTH  
 5. NOT USED  
 6. PROVIDE FINISHED END PANELS AT EXPOSED END OF CABINETS (TTP).  
 7. ALL SINKS ARE PROVIDED BY PLUMBING CONTR.  
 8. ALL SHELVING AND CABINET DIVIDERS ARE MEDIUM DENSITY FIBER BOARD (MDF) WITH A MEDIALASTIC LAMINATE BY CAB. WNF.  
 9. ALL 6" HIGH CABINETS TO BE  
 10. ALL CABINETS & SHELVING IN MEDIA CENTER AND OFFICE RECEPTION AREA WILL BE INSTALLED ON TOP OF CARPET W/ PLUG LAMINATE BASE.  
 11. SEE SPECIFICATION SECT. 1230 - MANUFACTURED CABINETS -



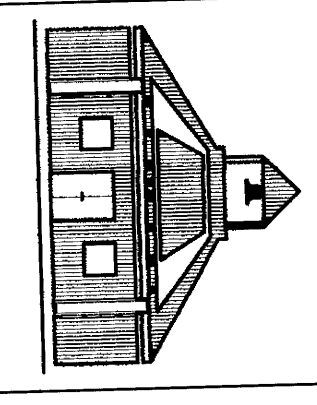
**23 SECTION TYPICAL CABINET**

**ARCHITECTURE PROFESSIONAL ASSOCIATION**  
 401 REDDENBUSH DRIVE  
 CHARLOTTE NC 28209  
 TEL 627-5555  
 FAX 627-5545

**THE PROFESSIONAL REGISTER**  
 ARCHITECTS  
 401 REDDENBUSH DRIVE  
 CHARLOTTE, NC 28209  
 TEL 627-5555  
 FAX 627-5545

ORKAN ARCHITECTURE, P.A. HEREBY RESERVES ITS RIGHTS IN THESE DRAWINGS, TEXTS AND DESIGNS. THESE DRAWINGS, TEXTS AND DESIGNS ARE TO BE REPRODUCED, CHANGED OR COPIED IN ANY MANNER WITHOUT THE WRITTEN PERMISSION FROM ORKAN ARCHITECTURE, P.A. ANY REPRODUCTION OF THESE DRAWINGS SHALL HAVE PRECEDENCE OVER ANY OTHER DRAWINGS, SPECIFICATIONS OR CONDITIONS ON THE JOB AND ORKAN ARCHITECTURE, P.A. SHALL BE RESPONSIBLE FOR ALL DISCREPANCIES BETWEEN THESE DRAWINGS AND SPECIFICATIONS SHOWN BY THESE DRAWINGS.

**ANDREWS**  
 MIDDLE SCHOOL  
 CHEROKEE COUNTY, N.C.



**CHEROKEE COUNTY SCHOOLS**  
 CASEWORK

DRAWN BY V.J.S.	APPROVED BY A.O.
JOB NO. AAS-9703	APPROVAL DATE APR 21, 98
NO. SHEET 28	TOTAL SHEETS 28
SHEET <b>A-12</b>	
DATE APR 1/2	