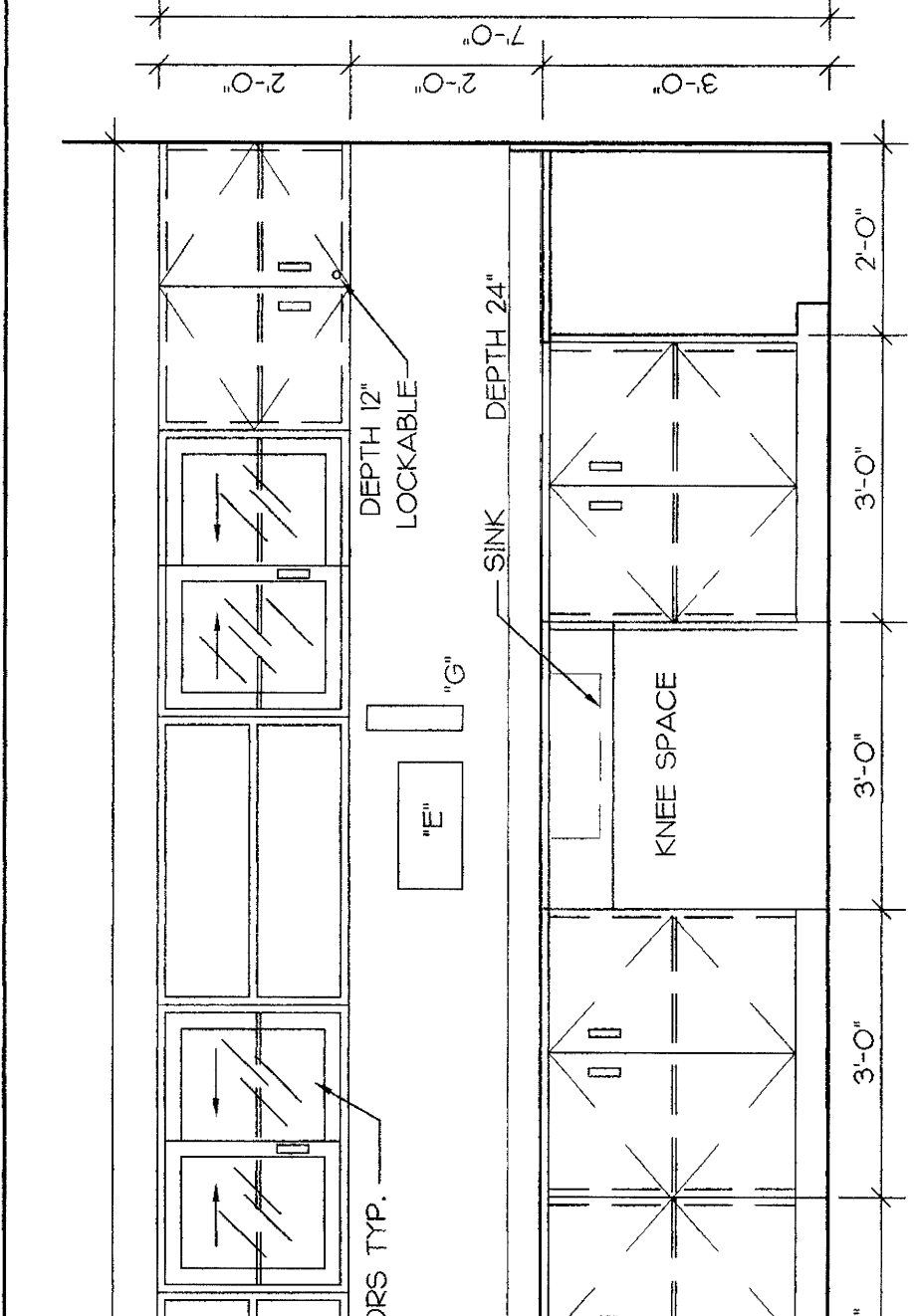
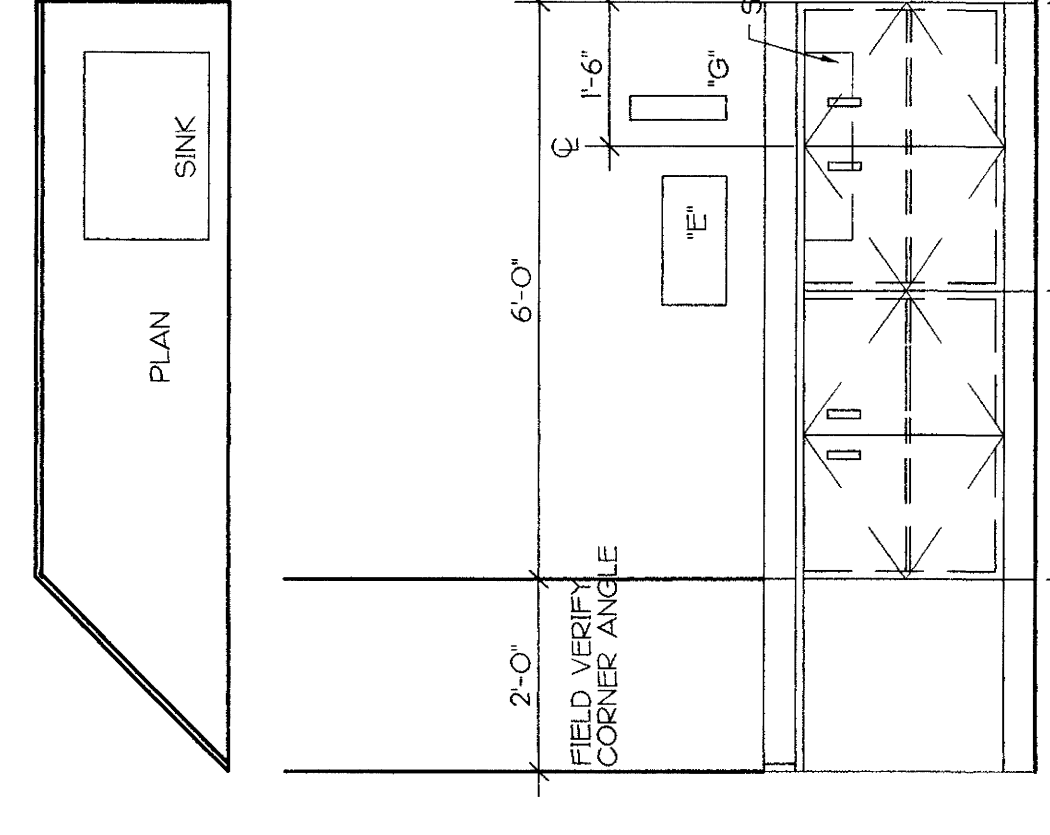


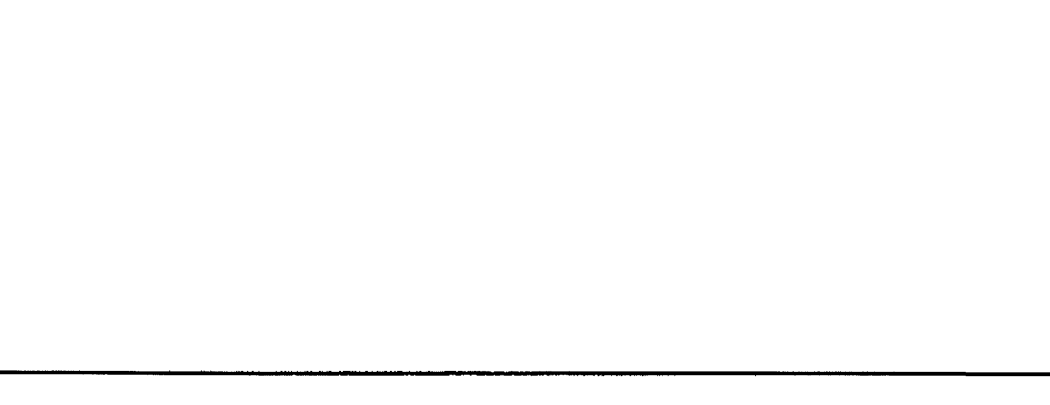
13 CASEWORK C-13
SCIENCE CLASSROOM (OPPOSITE HAND IN SCIENCE ROOMS NO 16 & 209)
1/2" = 1'-0"



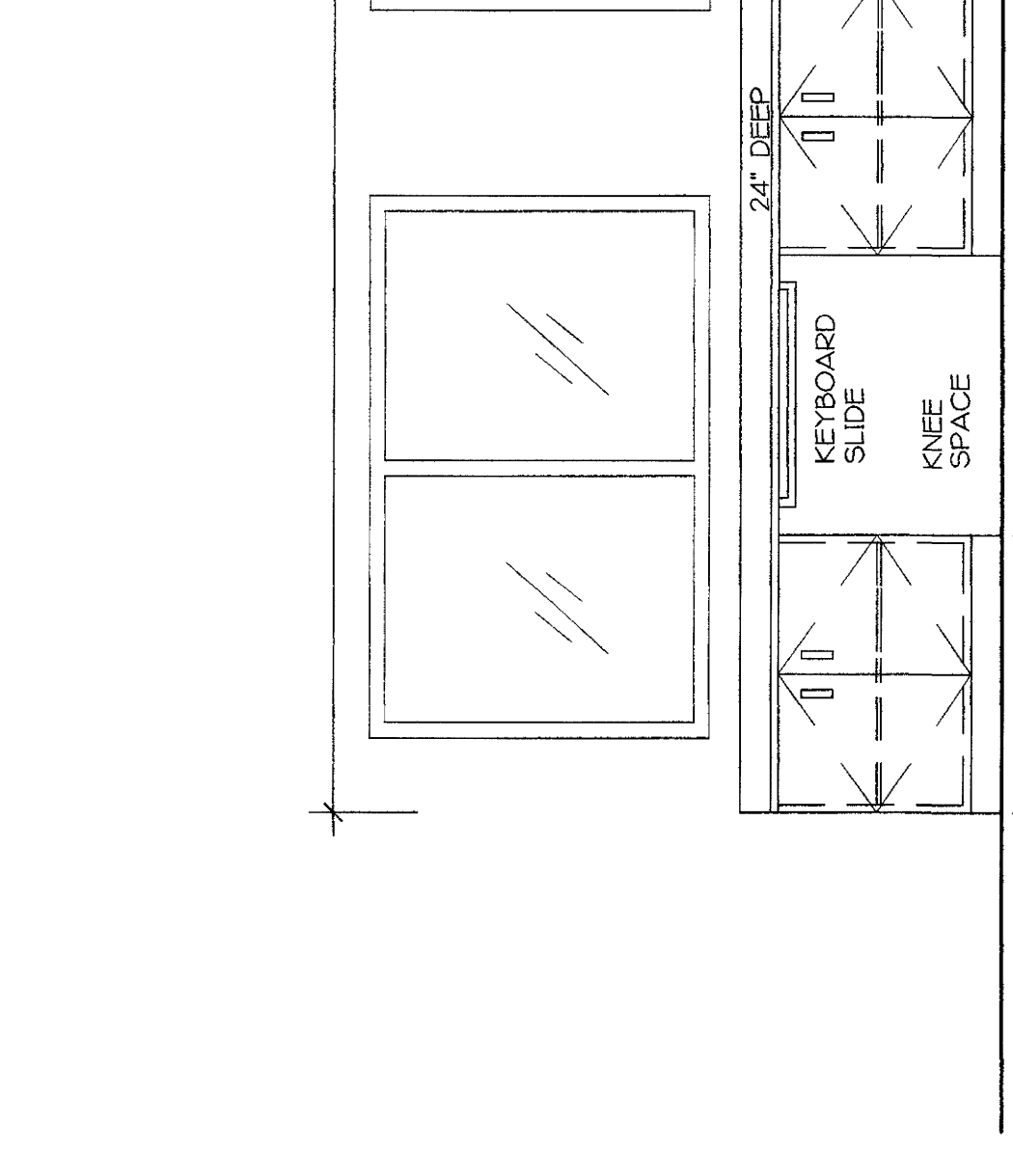
18 CASEWORK C-18
PRELOCATIONAL CLASSROOM
1/2" = 1'-0"



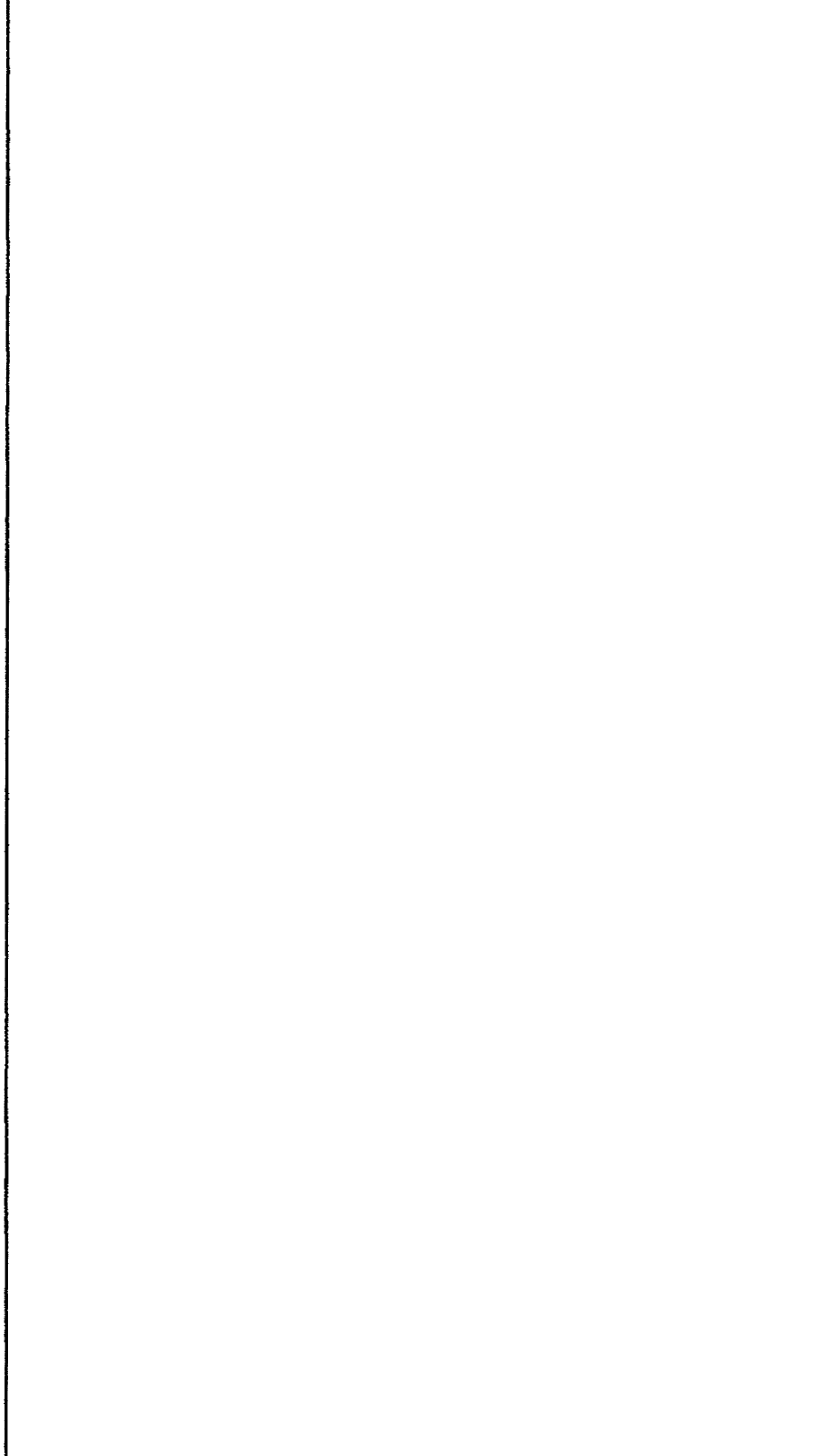
20 CASEWORK C-20
WORKROOM
1/2" = 1'-0"



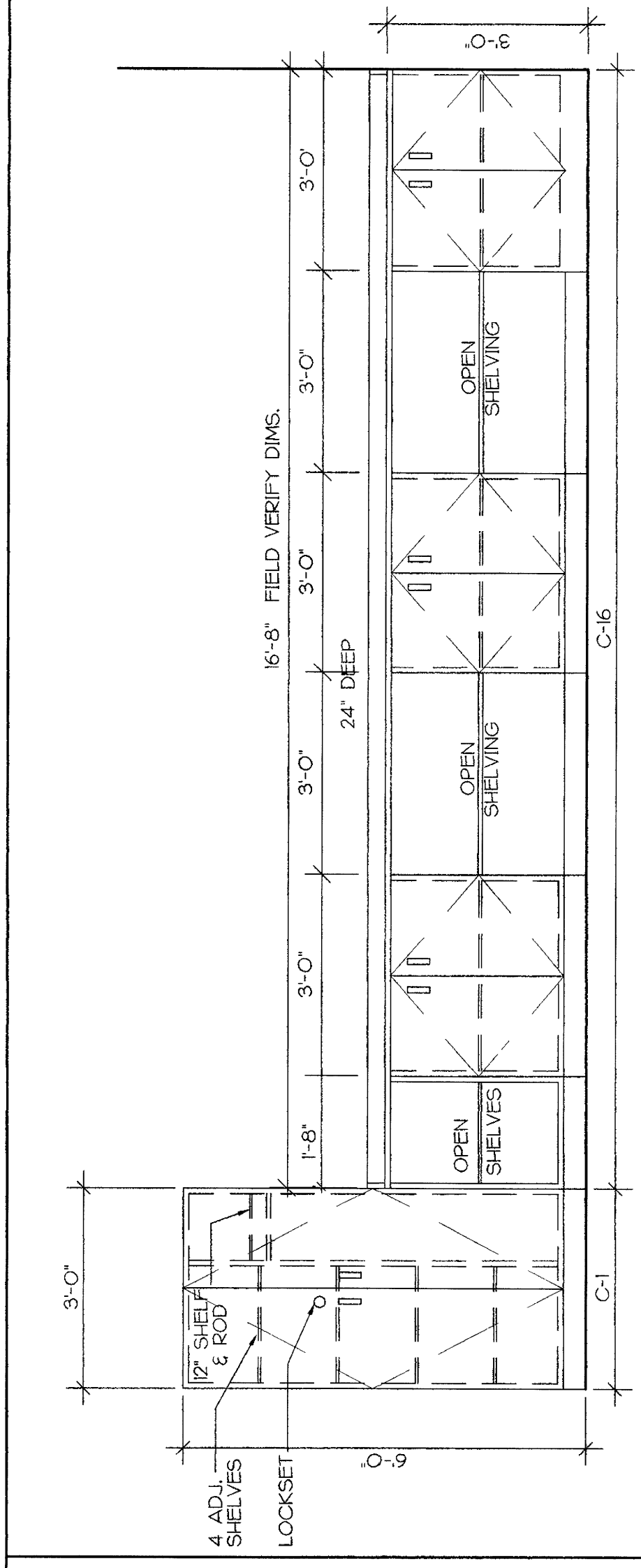
22 CASEWORK C-22
LIBRARY, WORKROOM
1/2" = 1'-0"



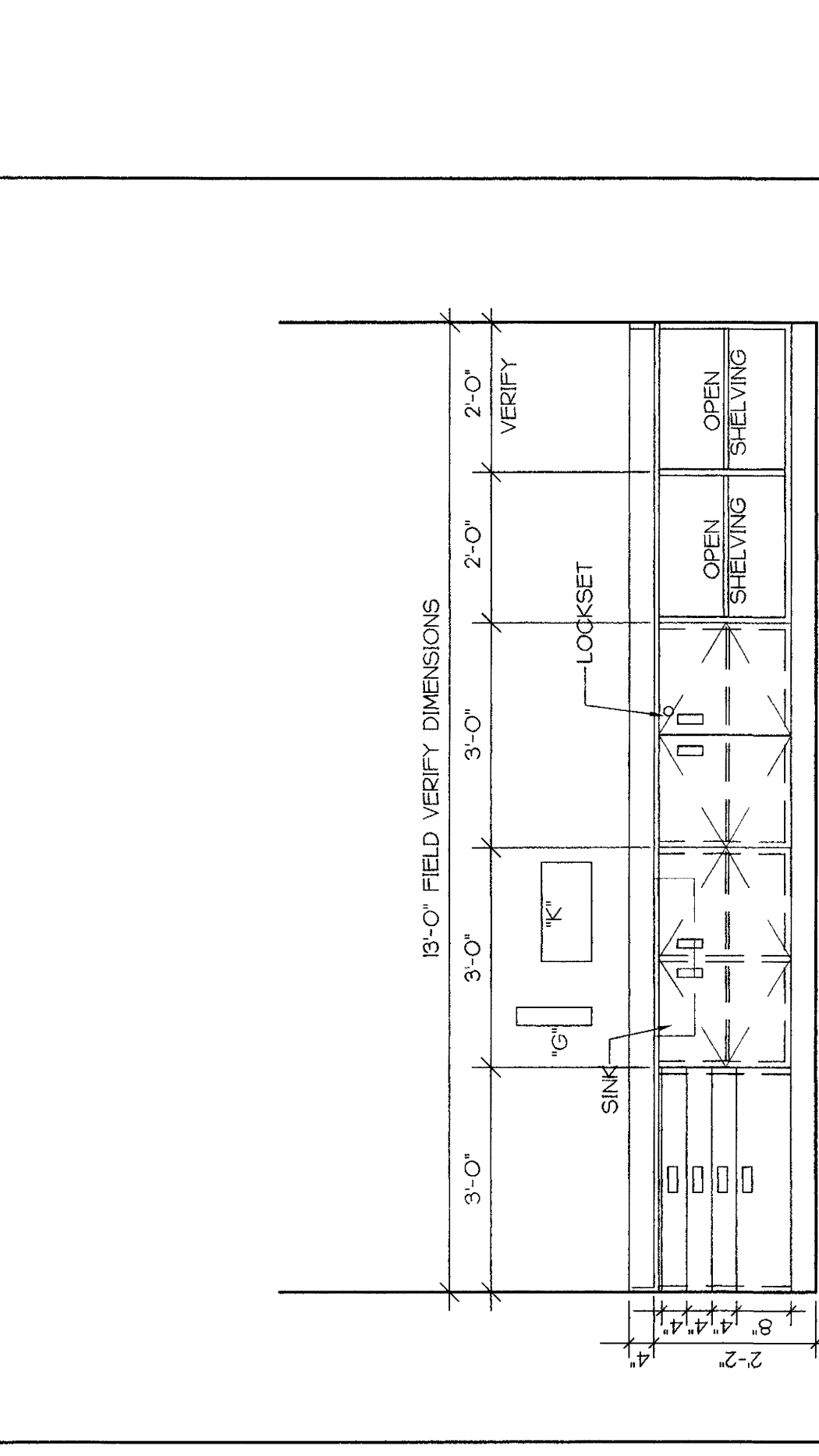
24 CASEWORK C-1-C-24
GUIDANCE OFFICE
1/2" = 1'-0"



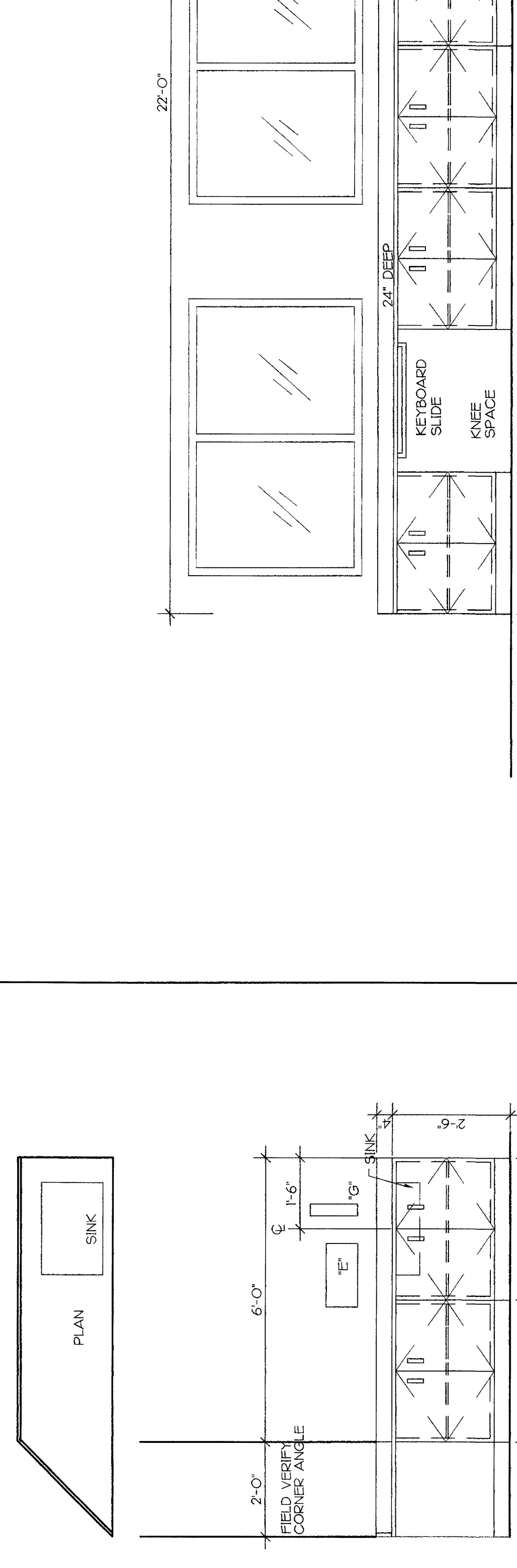
16 CASEWORK C-16
MIDDLE CLASSROOMS (SEE PLAN FOR HAND)
1/2" = 1'-0"



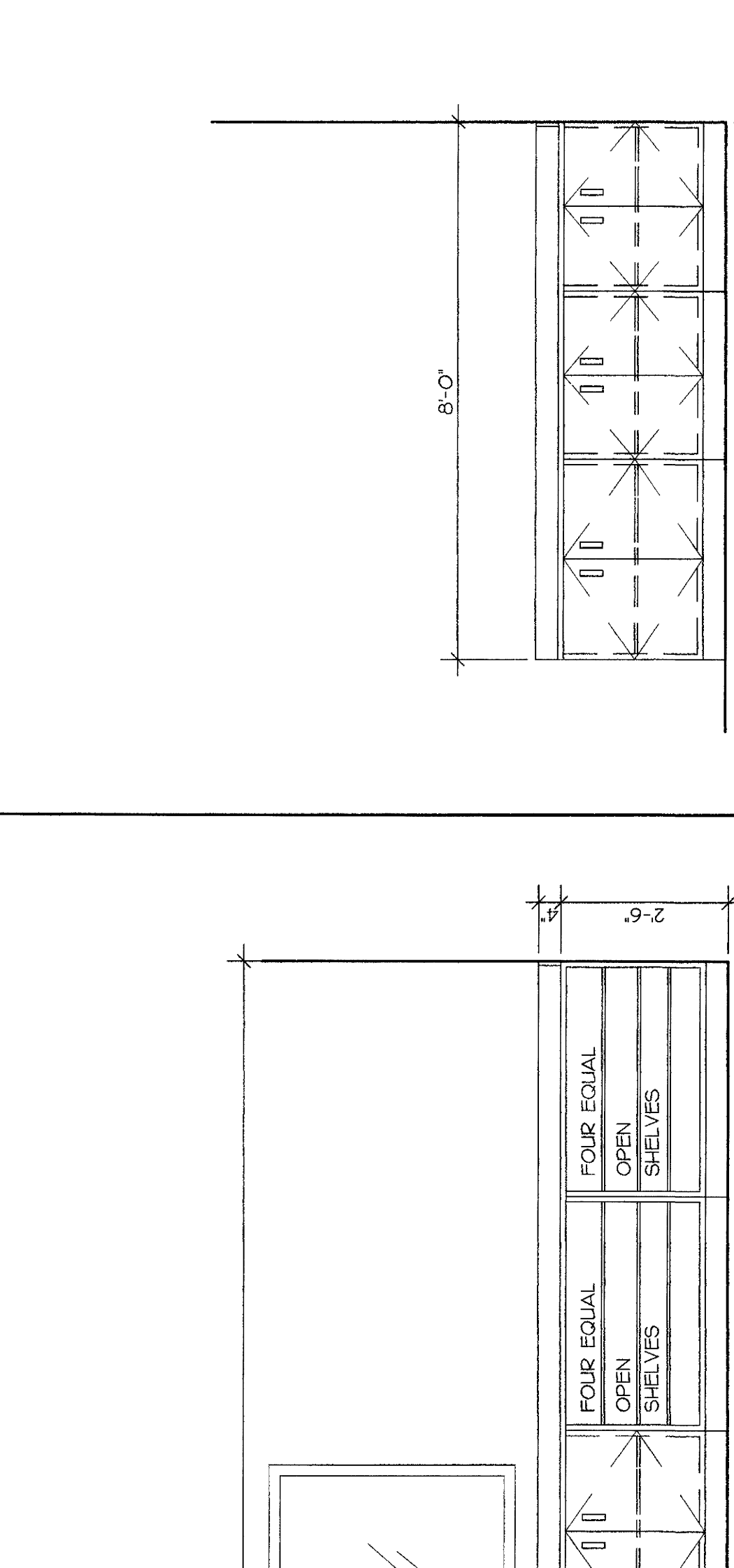
23 CASEWORK C-23
RESOURCE RM
1/2" = 1'-0"



17 CASEWORK C-17
(NOT USED)
1/2" = 1'-0"



21 CASEWORK C-21
LIBRARY, WORKROOM
1/2" = 1'-0"



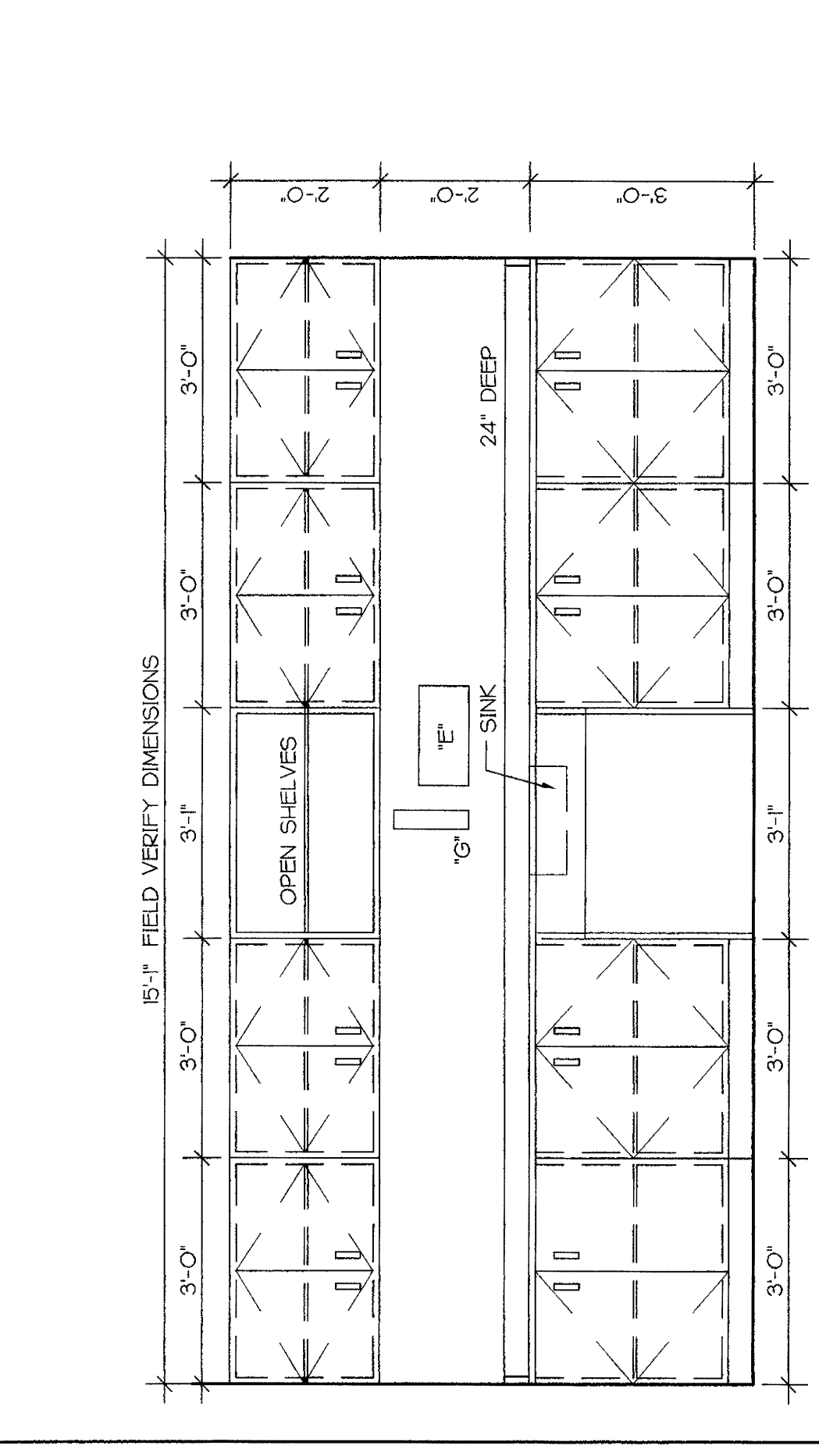
25 CASEWORK C-25
DRESSING ROOM - COAT HANGERS
1/2" = 1'-0"

NOTE: SEE A-8 FOR TOILET ACCESSORY SCHEDULE (TYP.)

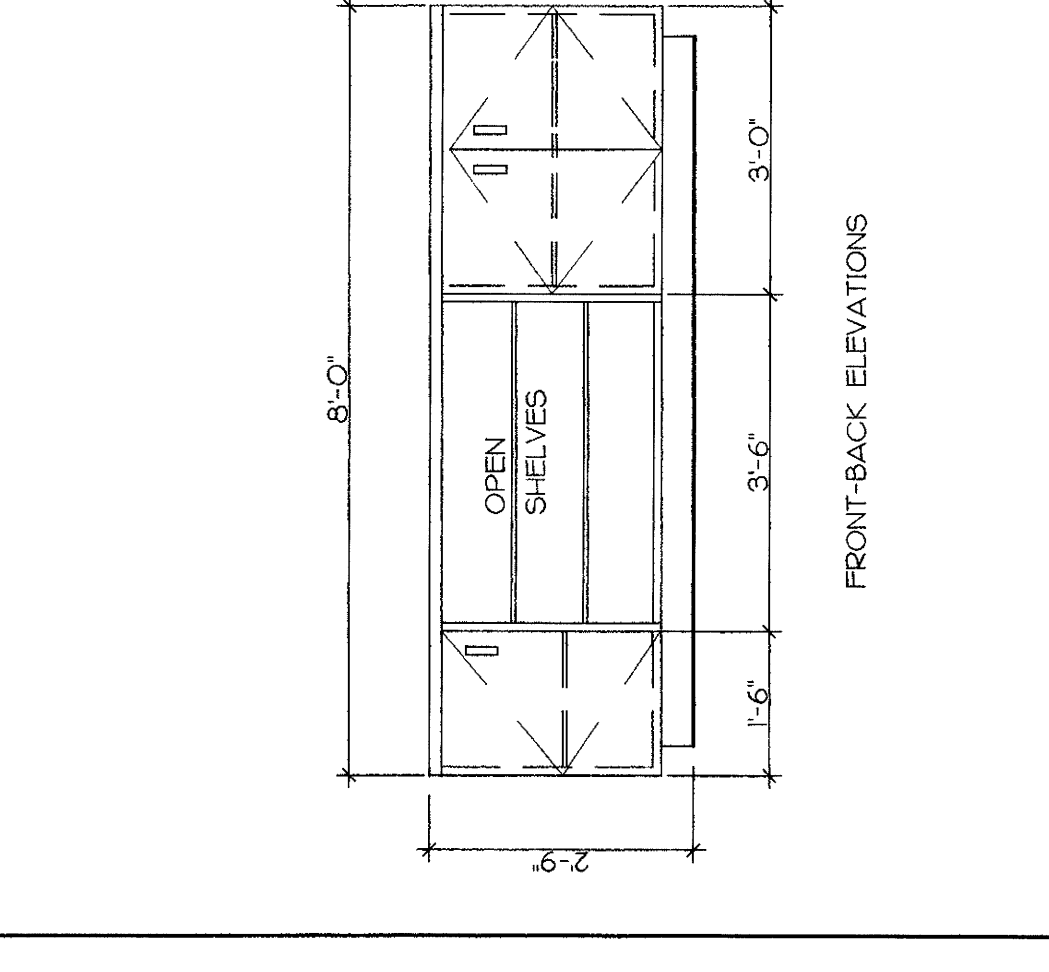
NOTE: COUNTER TOPS WITHOUT SINKS WILL BE STRAIGHT EDGE.

NOTE: COUNTER TOPS WITHOUT SINKS WILL BE STRAIGHT EDGE.

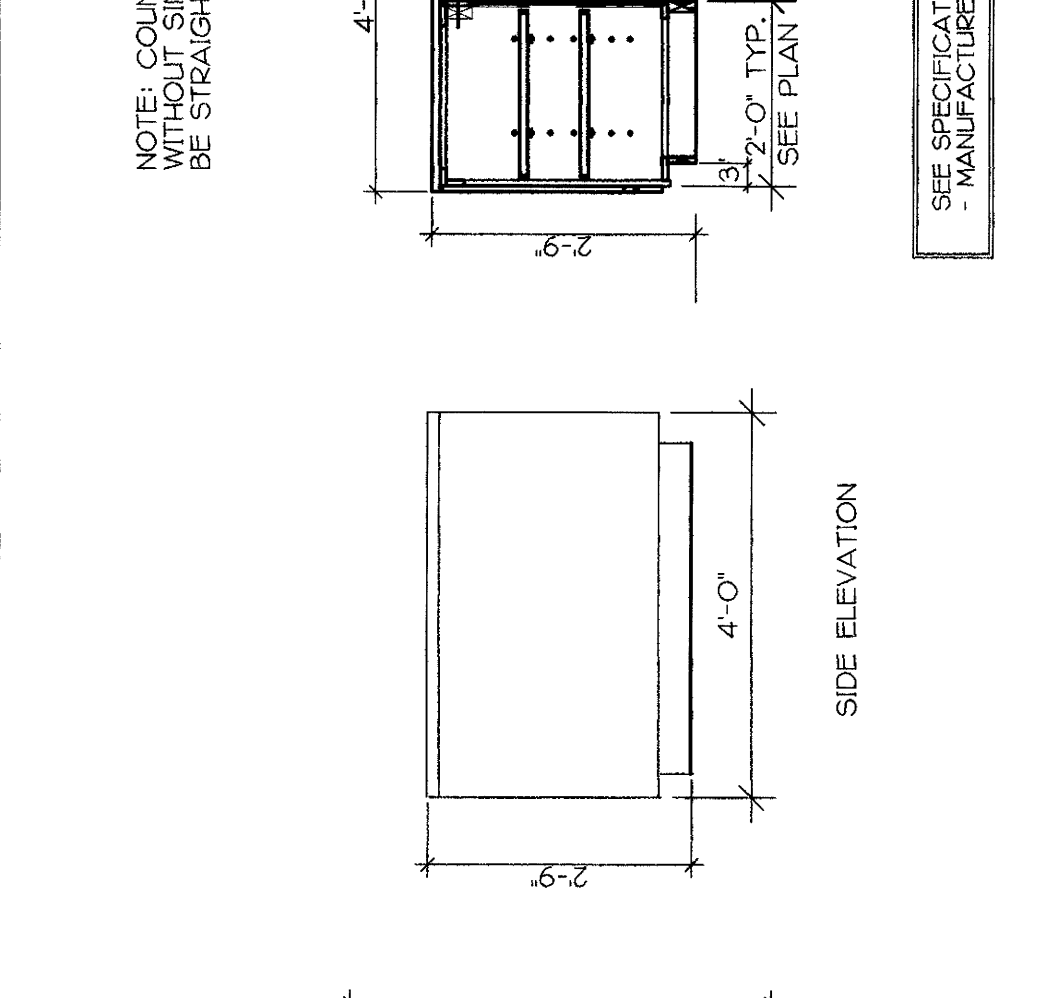
NOTE: COUNTER TOPS WITHOUT SINKS WILL BE STRAIGHT EDGE.



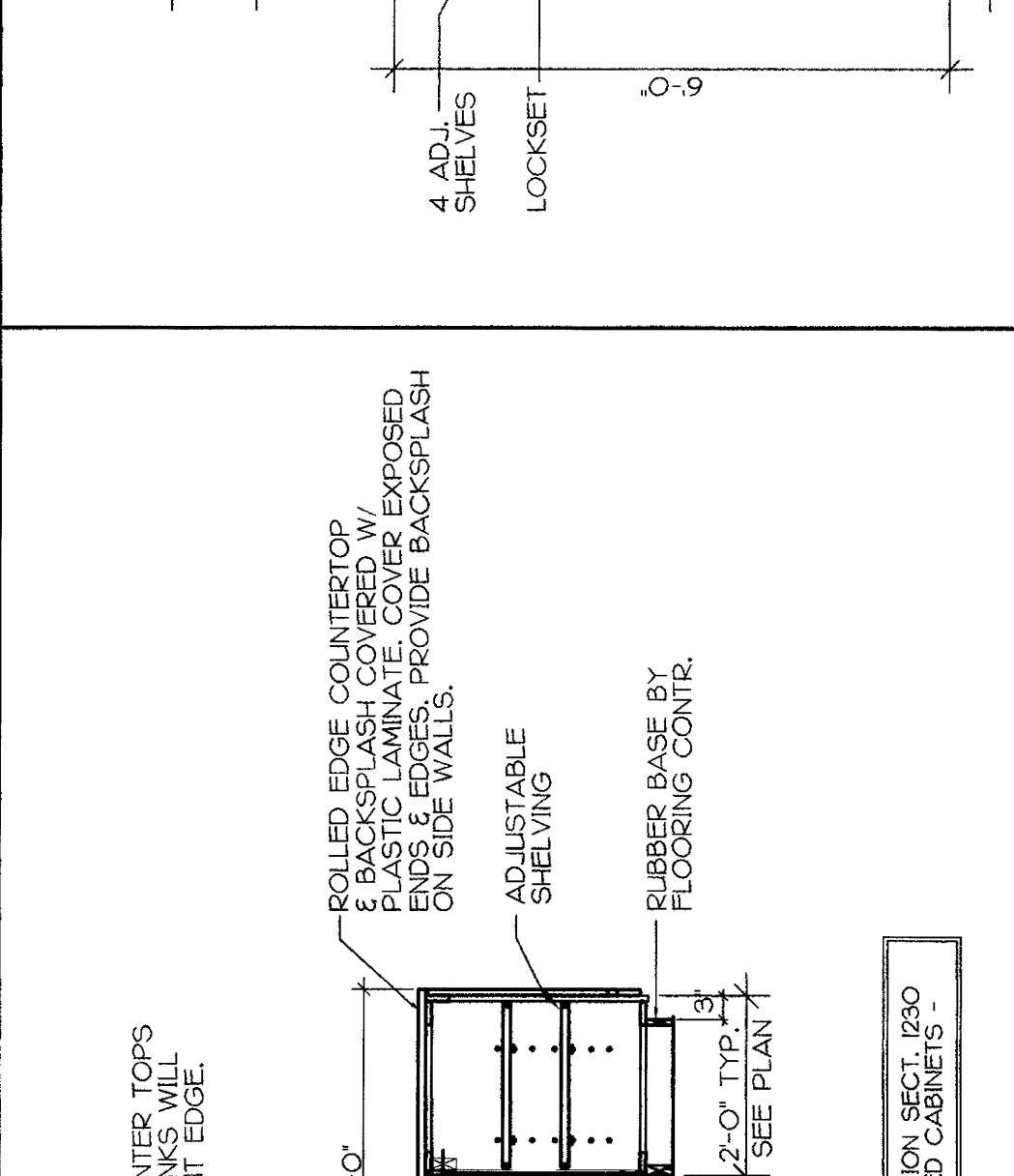
30 ELEVATION - TYPICAL CLASSROOM TACK/MARKERBOARD LOCATION
1/4" = 1'-0"



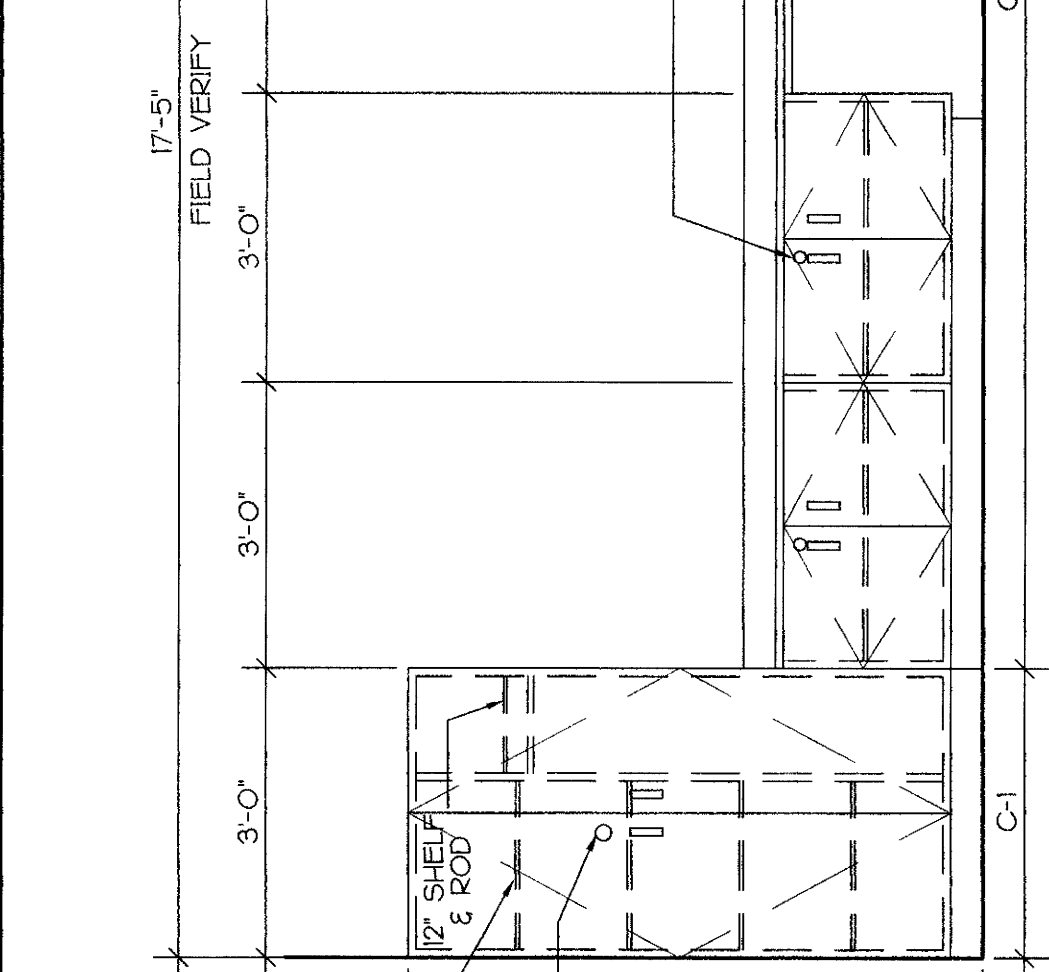
31 SECTION TYP. MARKER TRAY
1/2" = 1'-0"



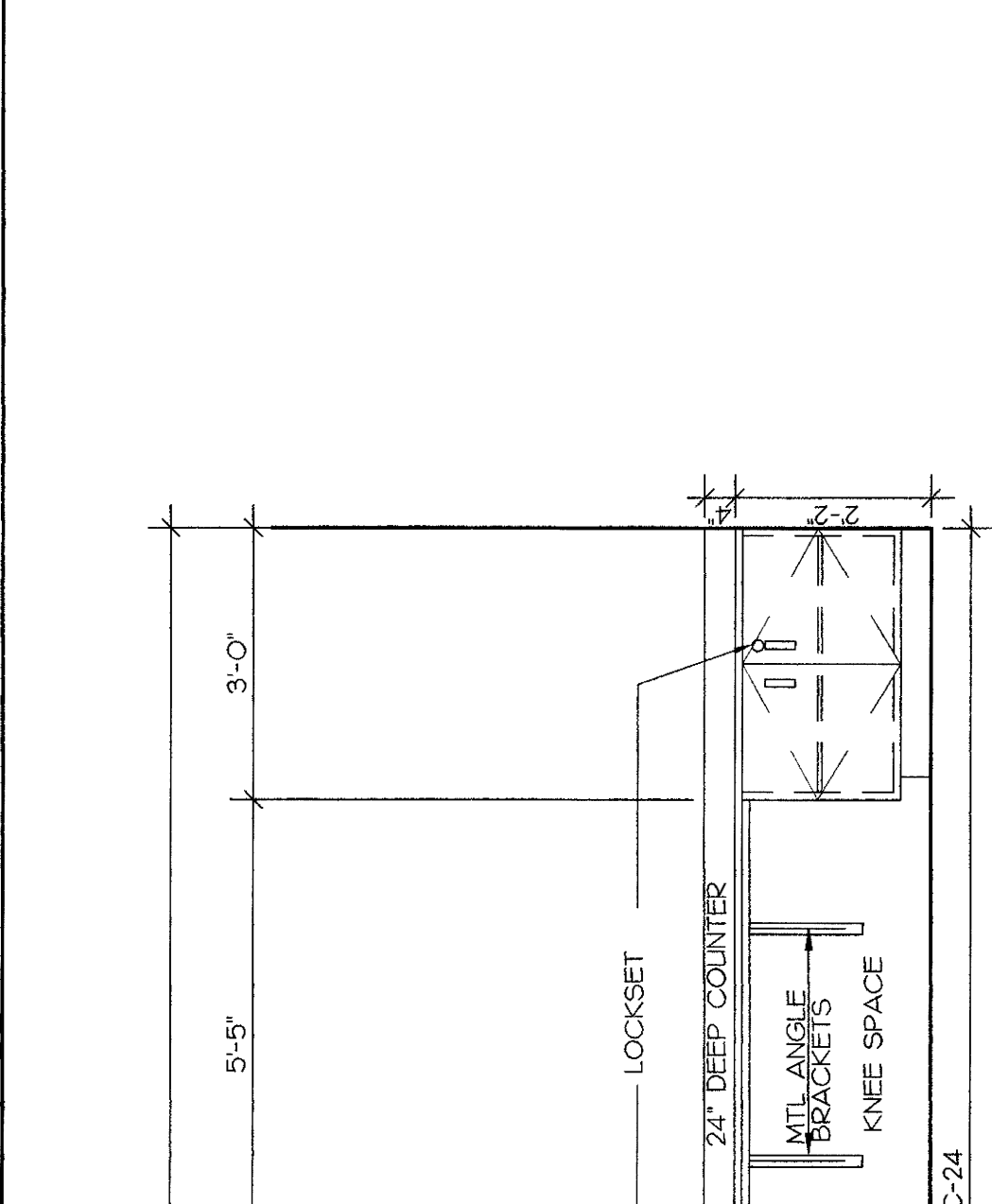
32 TYPICAL ELEVATION AT STORAGE ROOMS
1/2" = 1'-0"



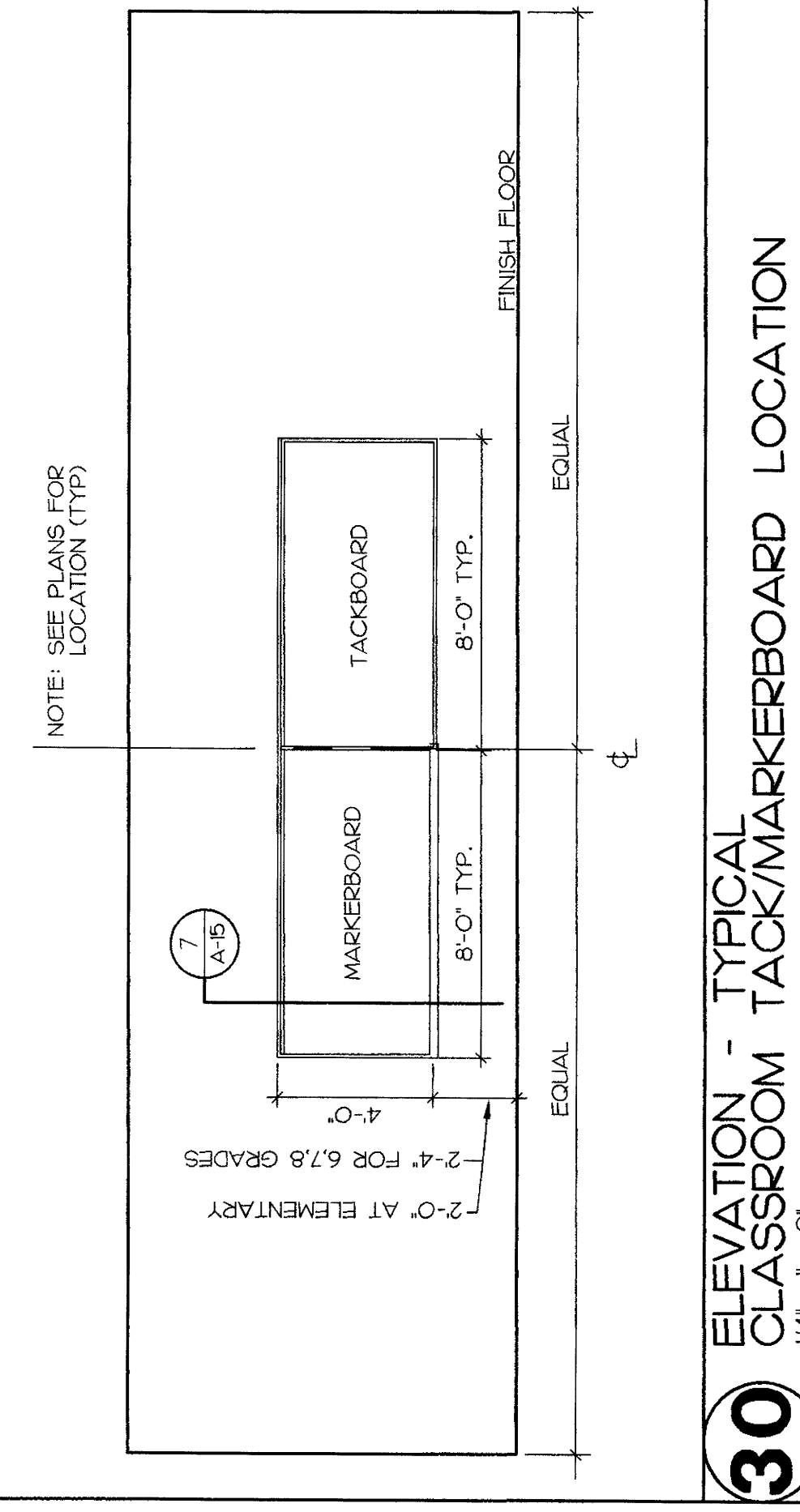
33 PREMANUFACTURED WOOD STOR. SHELVING
(SEE SPEC. SECTION 10670)
1" = 1'-0"



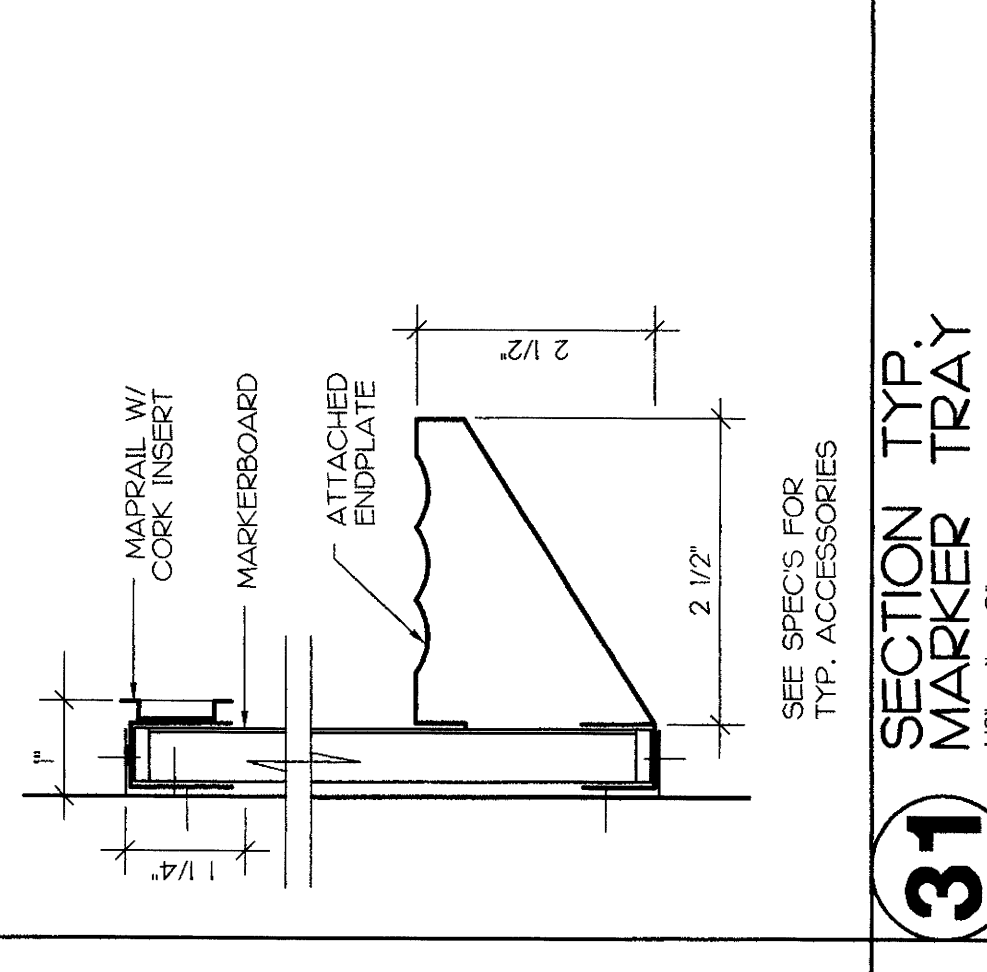
33 DRESSING ROOM - COAT HANGERS
1" = 1'-0"



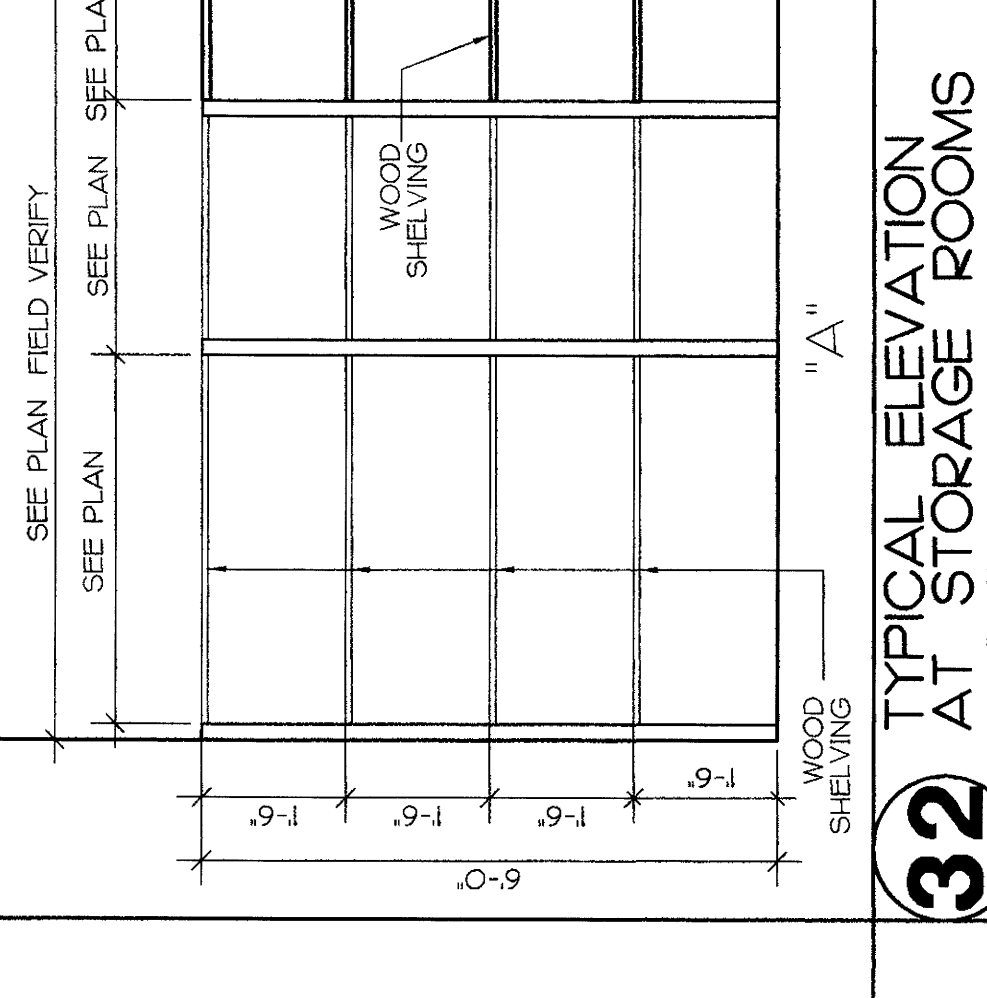
33 DRESSING ROOM - COAT HANGERS
1" = 1'-0"



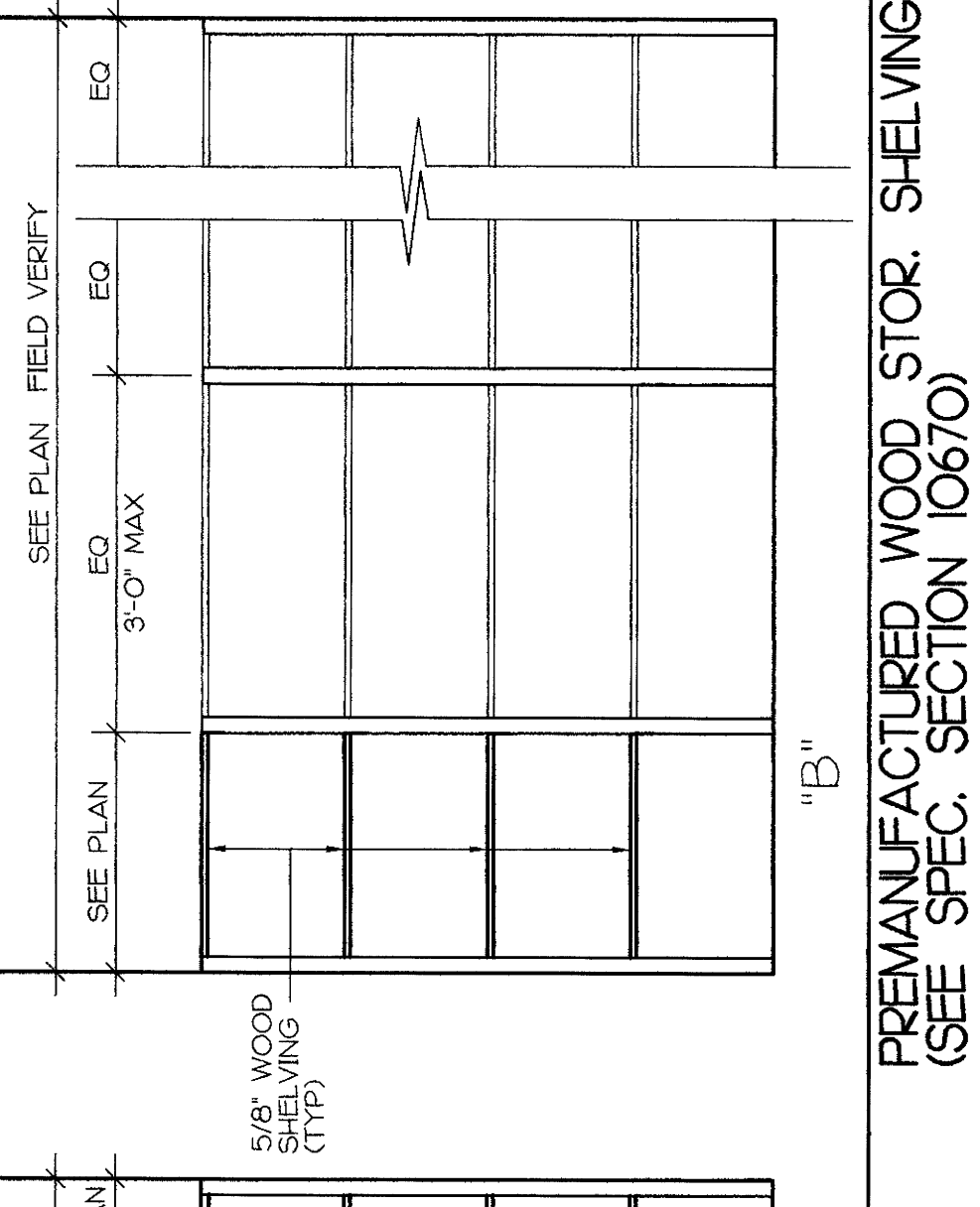
30 ELEVATION - TYPICAL CLASSROOM TACK/MARKERBOARD LOCATION
1/4" = 1'-0"



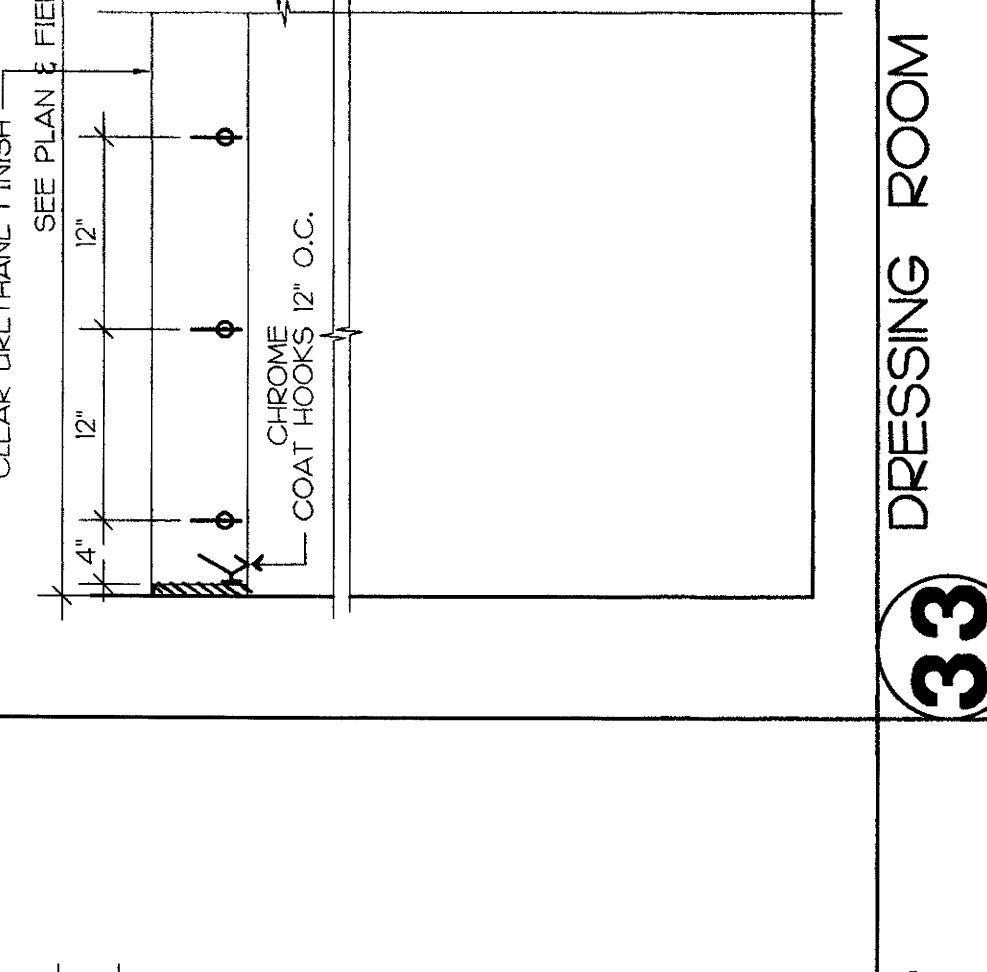
31 SECTION TYP. MARKER TRAY
1/2" = 1'-0"



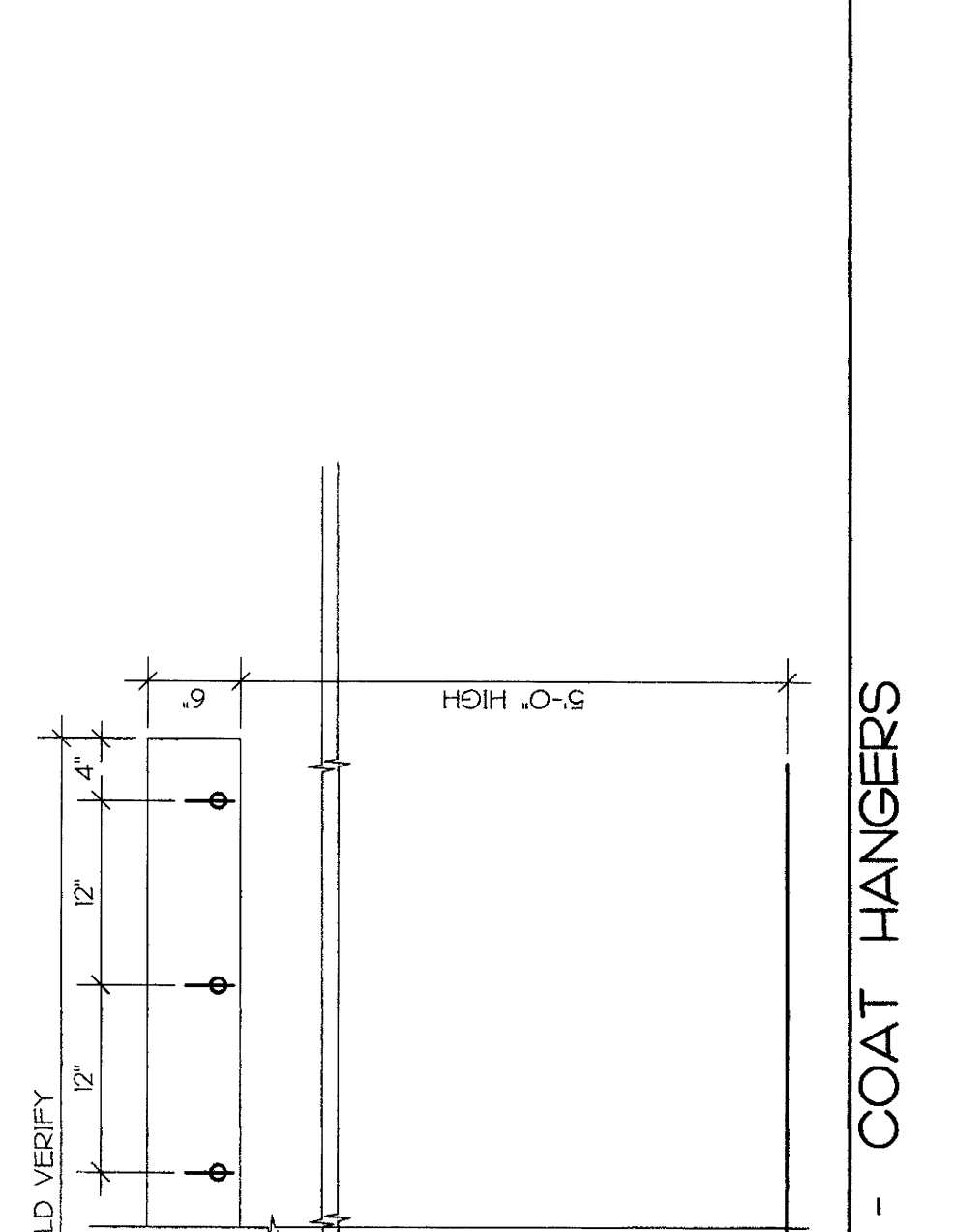
32 TYPICAL ELEVATION AT STORAGE ROOMS
1/2" = 1'-0"



33 PREMANUFACTURED WOOD STOR. SHELVING
(SEE SPEC. SECTION 10670)
1" = 1'-0"



33 DRESSING ROOM - COAT HANGERS
1" = 1'-0"



33 DRESSING ROOM - COAT HANGERS
1" = 1'-0"

NOTE: SEE PLANS FOR LOCATION (TYP.)

SEE SPECIFICATIONS, SECT. 10670 "MANUFACTURED CABINETS"

NOTE: COUNTER TOPS WITHOUT SINKS WILL BE STRAIGHT EDGE.

NOTE: COUNTER TOPS WITHOUT SINKS WILL BE STRAIGHT EDGE.

NOTE: COUNTER TOPS WITHOUT SINKS WILL BE STRAIGHT EDGE.

NOTE: COUNTER TOPS WITHOUT SINKS WILL BE STRAIGHT EDGE.