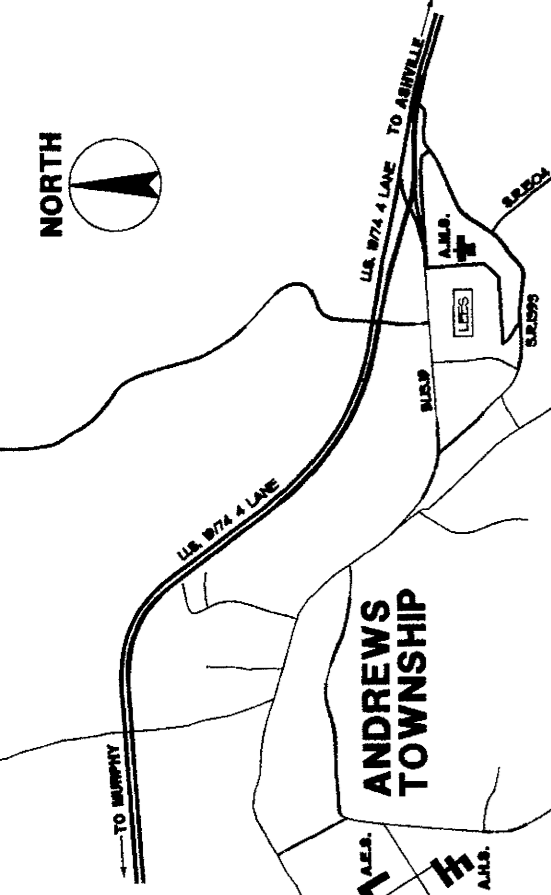


DL	DESCRIPTION
---	EXISTING ELEVATION CONTOURS (1 FT.)
---	FINISH ELEVATION CONTOURS (1 FT.)
---	EXISTING TREE LINE
---	NEW TREE LINE
---	CENTER LINE
---	TOP OF CURB
---	FINISH SPOT ELEVATIONS
---	BOTTOM OF CURB
---	HIGH POINT / LOW POINT
---	DIVERSION / DIRECTION OF WATERFLOW
---	NETTING
---	NEW CONSTRUCTION
---	SIGN
3.3	EXISTING CATCH BASIN
B	AREA DRAIN
W3	STORM DRAIN LINE
W3	SANITARY SEWER MANHOLE
---	SANITARY SEWER LINE
---	SOIL BORING LOCATION
---	LIMITS OF DISTURBED AREA
---	SILT FENCE
---	PERMANENT FENCE
---	TREE PROTECTION FENCE
---	CONSTRUCTION FENCE
---	BASEN DEMARCATION LINE
ES	FLARED END SECTION
---	FLARED END SECTION
CB3	CATCH BASIN, 400' AREA DRAIN, 10" HUB DRAIN
---	CATCH BASIN 5' YARD INLETS W/ TEMPORARY BLOCK & GRAVEL FILTER AND 10" AND 12" GATE FOR C/S
C13	CLRB INLET (C-CLRB INLET)
---	CLRB INLET
---	EMERGENCY SPILLWAY
---	6" GRAVEL 200' LONG STABILIZED CONSTRUCTION ENTRANCE

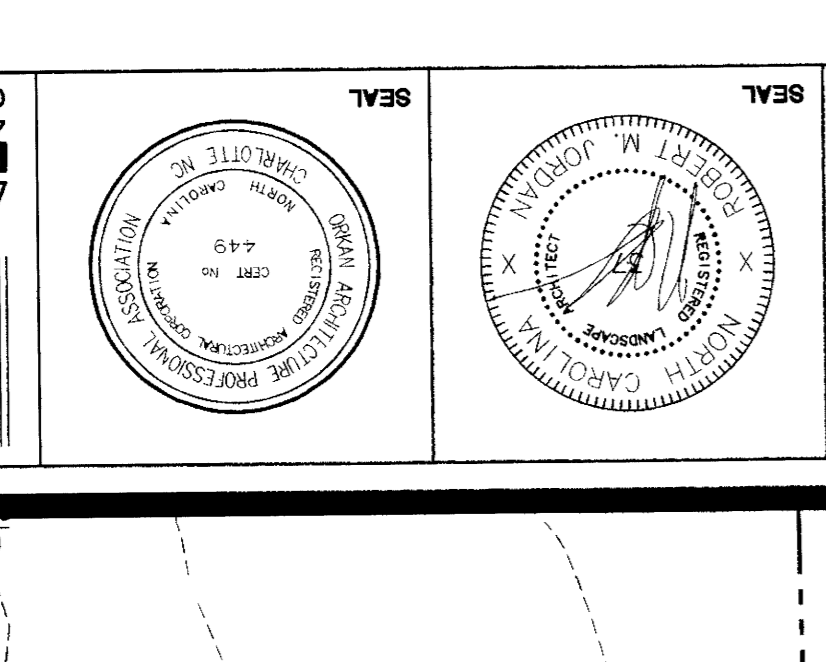
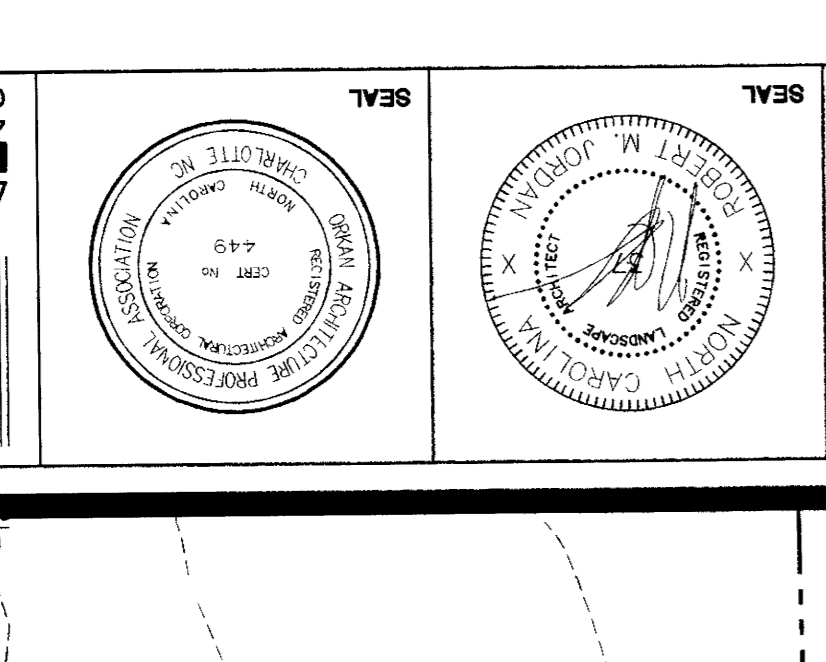
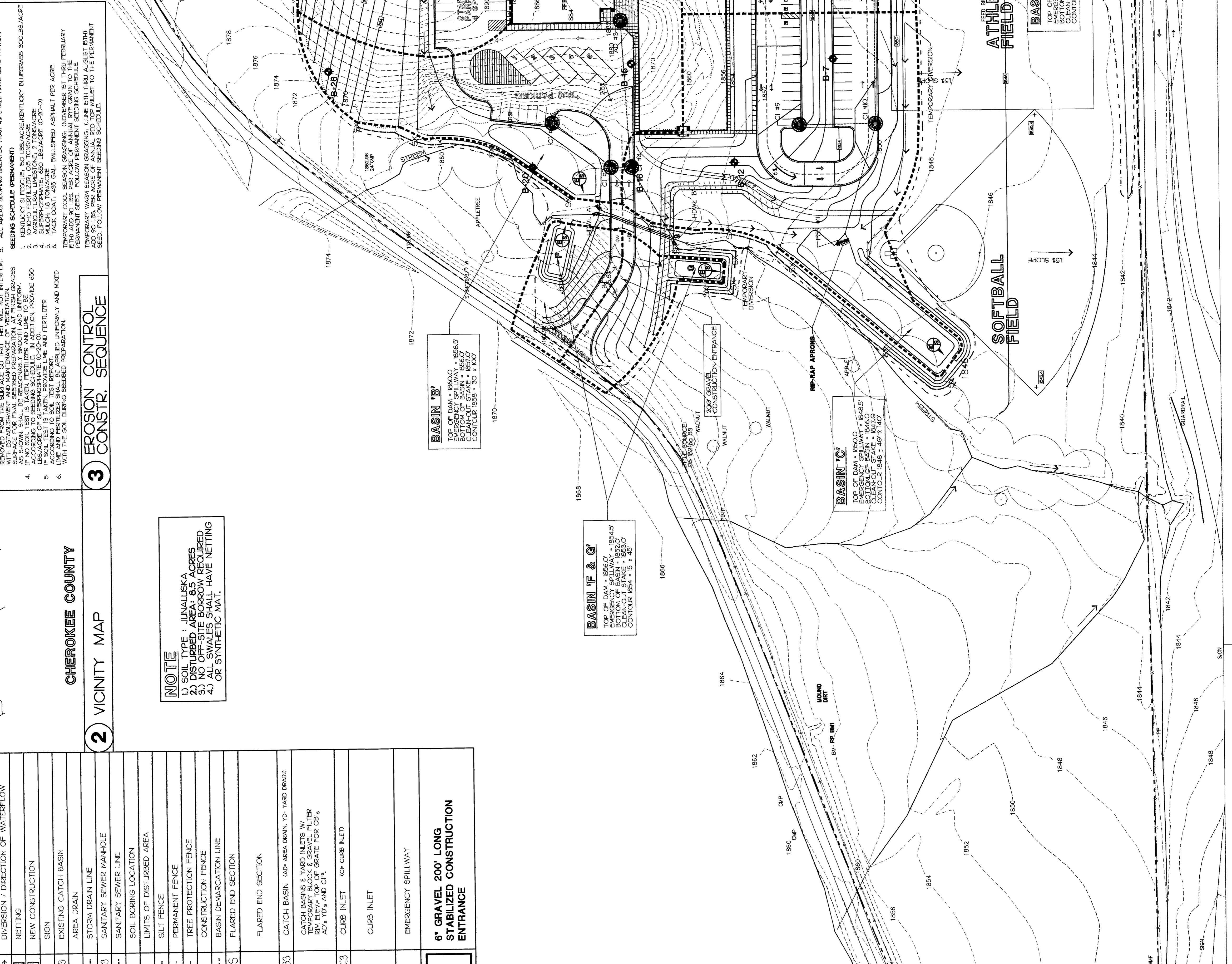
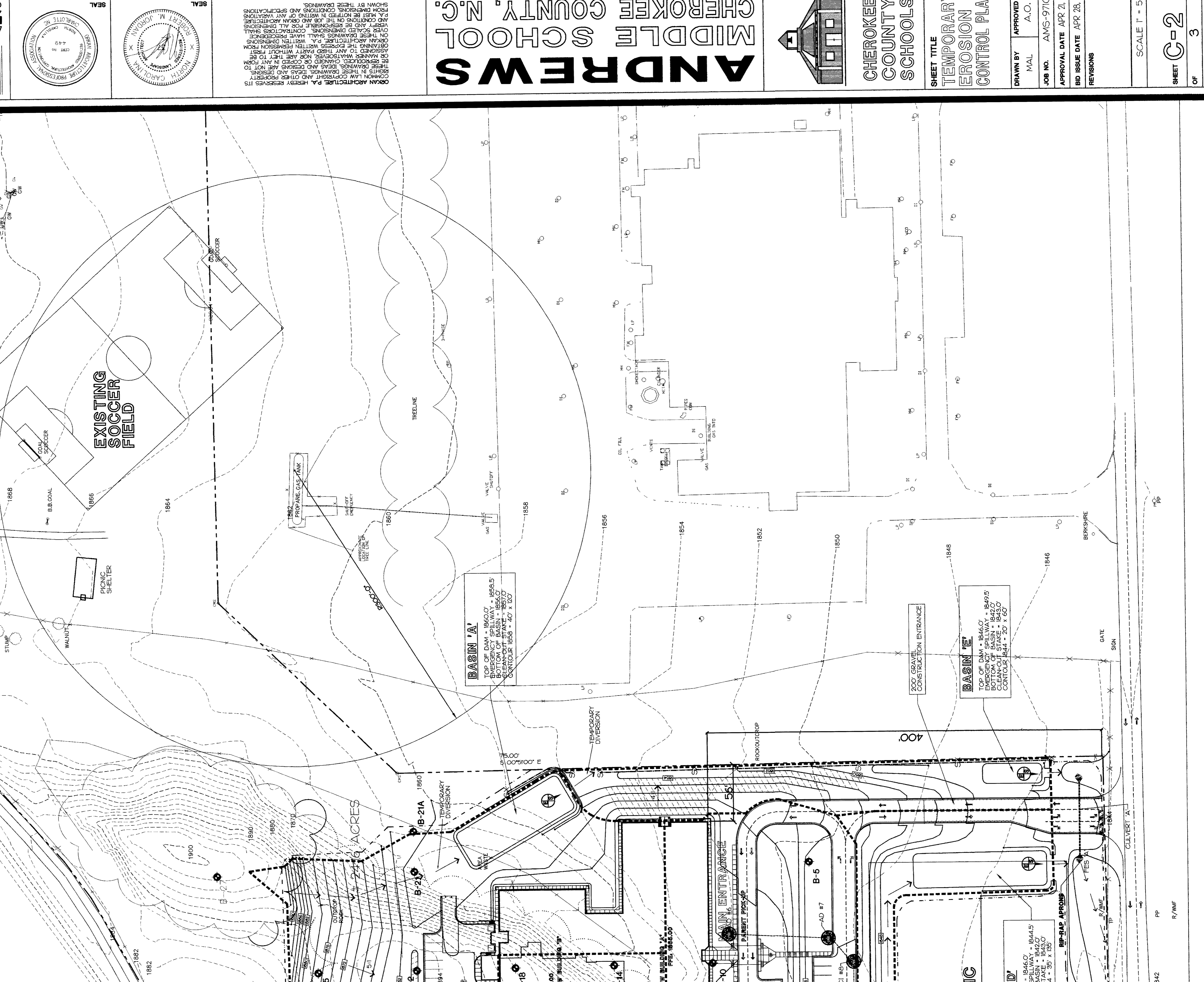
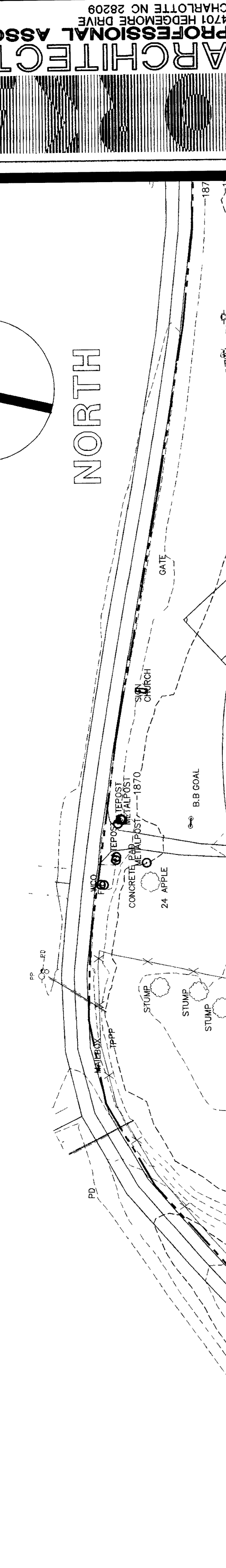


2 VICINITY MAP

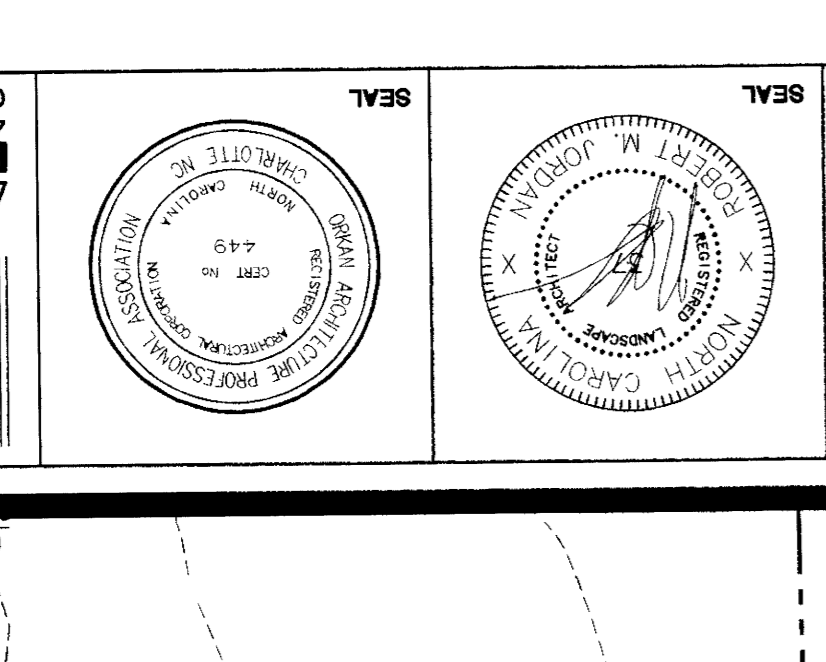
NOTE
 1) SOIL TYPE: UNALUSKA
 2) DISTURBED AREA: 8.5 ACRES
 3) NO OFF-SITE BORROW REQUIRED
 4) ALL SWALES SHALL HAVE NETTING OR SYNTHETIC MAT.

3 EROSION CONTROL CONSTR. SEQUENCE

1. RESTRAIN EROSION.
2. SLOPE PROTECTION SHALL BE INSTALLED ACCORDING TO THE SEEDING SCHEDULE.
3. RESTRAIN EROSION.
4. RESTRAIN EROSION.
5. RESTRAIN EROSION.
6. RESTRAIN EROSION.
7. RESTRAIN EROSION.
8. RESTRAIN EROSION.
9. RESTRAIN EROSION.
10. RESTRAIN EROSION.
11. RESTRAIN EROSION.
12. RESTRAIN EROSION.
13. RESTRAIN EROSION.
14. RESTRAIN EROSION.
15. RESTRAIN EROSION.
16. RESTRAIN EROSION.
17. RESTRAIN EROSION.
18. RESTRAIN EROSION.
19. RESTRAIN EROSION.
20. RESTRAIN EROSION.
21. RESTRAIN EROSION.
22. RESTRAIN EROSION.
23. RESTRAIN EROSION.
24. RESTRAIN EROSION.
25. RESTRAIN EROSION.
26. RESTRAIN EROSION.
27. RESTRAIN EROSION.
28. RESTRAIN EROSION.
29. RESTRAIN EROSION.
30. RESTRAIN EROSION.
31. RESTRAIN EROSION.
32. RESTRAIN EROSION.
33. RESTRAIN EROSION.
34. RESTRAIN EROSION.
35. RESTRAIN EROSION.
36. RESTRAIN EROSION.
37. RESTRAIN EROSION.
38. RESTRAIN EROSION.
39. RESTRAIN EROSION.
40. RESTRAIN EROSION.
41. RESTRAIN EROSION.
42. RESTRAIN EROSION.
43. RESTRAIN EROSION.
44. RESTRAIN EROSION.
45. RESTRAIN EROSION.
46. RESTRAIN EROSION.
47. RESTRAIN EROSION.
48. RESTRAIN EROSION.
49. RESTRAIN EROSION.
50. RESTRAIN EROSION.
51. RESTRAIN EROSION.
52. RESTRAIN EROSION.
53. RESTRAIN EROSION.
54. RESTRAIN EROSION.
55. RESTRAIN EROSION.
56. RESTRAIN EROSION.
57. RESTRAIN EROSION.
58. RESTRAIN EROSION.
59. RESTRAIN EROSION.
60. RESTRAIN EROSION.
61. RESTRAIN EROSION.
62. RESTRAIN EROSION.
63. RESTRAIN EROSION.
64. RESTRAIN EROSION.
65. RESTRAIN EROSION.
66. RESTRAIN EROSION.
67. RESTRAIN EROSION.
68. RESTRAIN EROSION.
69. RESTRAIN EROSION.
70. RESTRAIN EROSION.
71. RESTRAIN EROSION.
72. RESTRAIN EROSION.
73. RESTRAIN EROSION.
74. RESTRAIN EROSION.
75. RESTRAIN EROSION.
76. RESTRAIN EROSION.
77. RESTRAIN EROSION.
78. RESTRAIN EROSION.
79. RESTRAIN EROSION.
80. RESTRAIN EROSION.
81. RESTRAIN EROSION.
82. RESTRAIN EROSION.
83. RESTRAIN EROSION.
84. RESTRAIN EROSION.
85. RESTRAIN EROSION.
86. RESTRAIN EROSION.
87. RESTRAIN EROSION.
88. RESTRAIN EROSION.
89. RESTRAIN EROSION.
90. RESTRAIN EROSION.
91. RESTRAIN EROSION.
92. RESTRAIN EROSION.
93. RESTRAIN EROSION.
94. RESTRAIN EROSION.
95. RESTRAIN EROSION.
96. RESTRAIN EROSION.
97. RESTRAIN EROSION.
98. RESTRAIN EROSION.
99. RESTRAIN EROSION.
100. RESTRAIN EROSION.



ORAN ARCHITECTURE, P.A. HERBY RESERVES ITS RIGHTS IN THESE DRAWINGS, IDEAS AND DESIGN. THESE DRAWINGS, IDEAS AND DESIGN ARE NOT TO BE REPRODUCED, COPIED, REPRODUCED, OR TRANSMITTED IN ANY FORM OR BY ANY MEANS, ELECTRONIC OR MECHANICAL, INCLUDING PHOTOCOPYING, RECORDING, OR BY ANY INFORMATION STORAGE AND RETRIEVAL SYSTEM, WITHOUT THE WRITTEN PERMISSION OF ORAN ARCHITECTURE, P.A. CONTRACTORS SHALL BE RESPONSIBLE FOR OBTAINING ALL NECESSARY PERMITS AND APPROVALS FROM THE APPROPRIATE AGENCIES AND AGENCIES. CONTRACTORS SHALL BE RESPONSIBLE FOR OBTAINING ALL NECESSARY PERMITS AND APPROVALS FROM THE APPROPRIATE AGENCIES AND AGENCIES. CONTRACTORS SHALL BE RESPONSIBLE FOR OBTAINING ALL NECESSARY PERMITS AND APPROVALS FROM THE APPROPRIATE AGENCIES AND AGENCIES.



ARCHITECT
 ANDREW M. JOHNSON
 4701 HEBBARD DRIVE
 CHARLOTTE, NC 28209