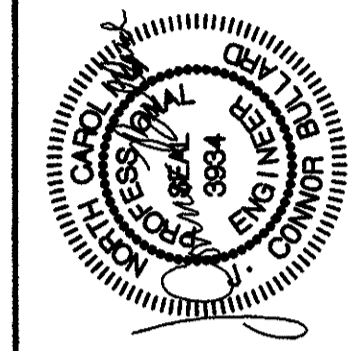
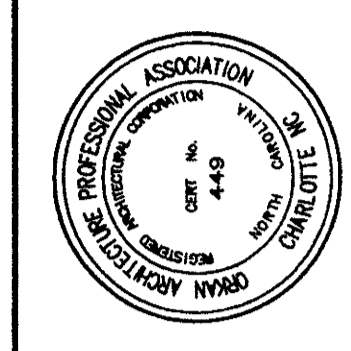
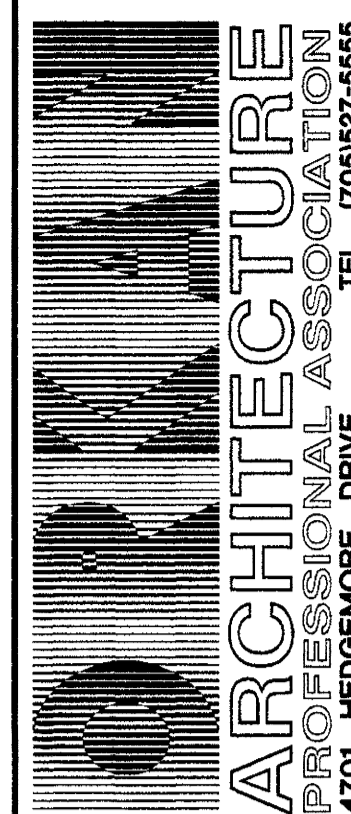
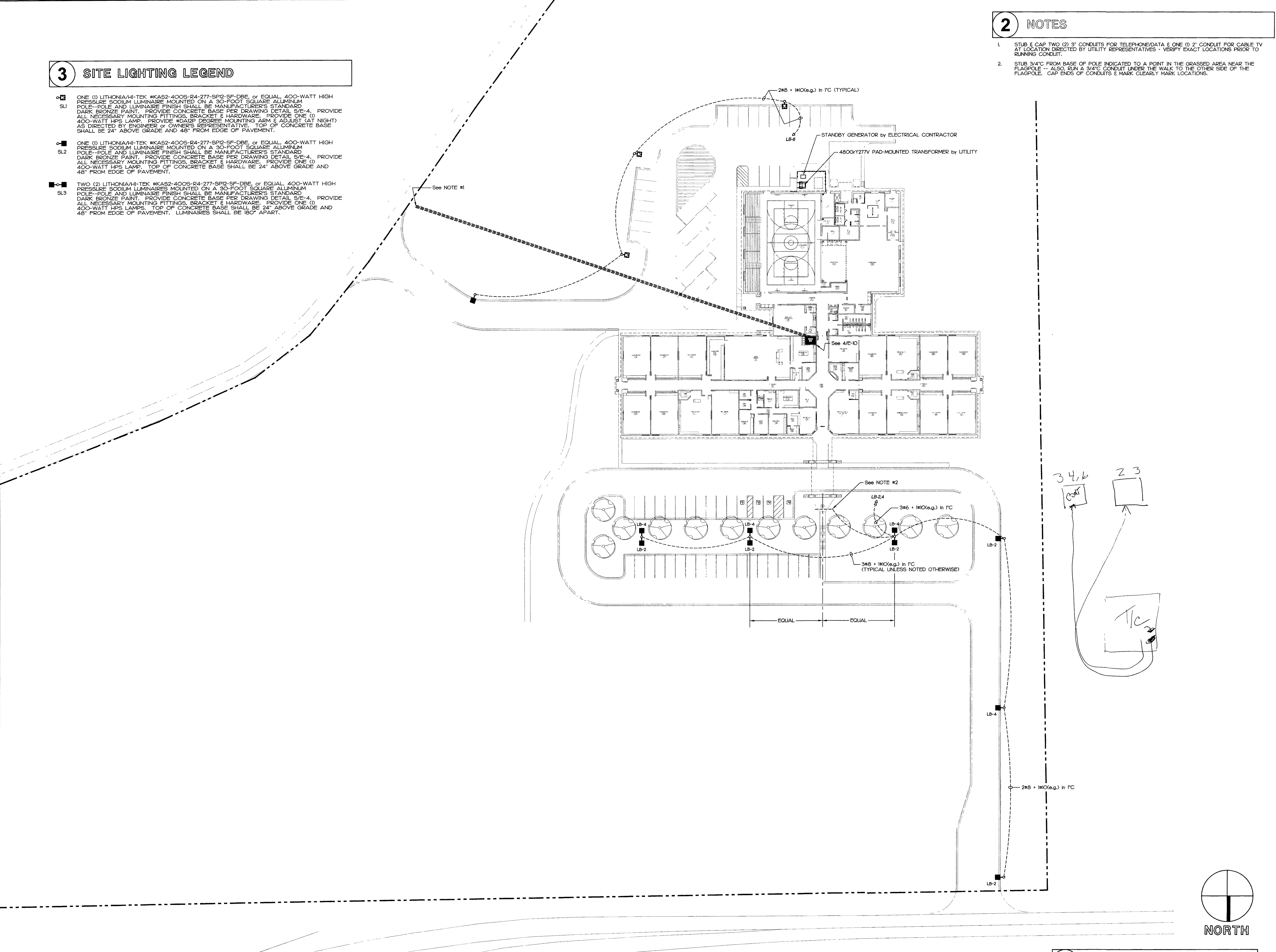


3 SITE LIGHTING LEGEND

- ONE (1) LITHONIA/HI-TEK #KAS2-400S-R4-277-SP12-SF-DBE, or EQUAL, 400-WATT HIGH PRESSURE SODIUM LUMINAIRE MOUNTED ON A 30-FOOT SQUARE ALUMINUM POLE-POLE AND LUMINAIRE FINISH SHALL BE MANUFACTURER'S STANDARD DARK BRONZE PAINT. PROVIDE CONCRETE BASE PER DRAWING DETAIL S/E-4. PROVIDE ALL NECESSARY MOUNTING FITTINGS, BRACKET & HARDWARE. PROVIDE ONE (1) 400-WATT HPS LAMP. PROVIDE #DA12P DEGREE MOUNTING ARM & ADJUST (AT NIGHT) AS DIRECTED BY ENGINEER or OWNER'S REPRESENTATIVE. TOP OF CONCRETE BASE SHALL BE 24" ABOVE GRADE AND 48" FROM EDGE OF PAVEMENT.
- ONE (1) LITHONIA/HI-TEK #KAS2-400S-R4-277-SP12-SF-DBE, or EQUAL, 400-WATT HIGH PRESSURE SODIUM LUMINAIRE MOUNTED ON A 30-FOOT SQUARE ALUMINUM POLE-POLE AND LUMINAIRE FINISH SHALL BE MANUFACTURER'S STANDARD DARK BRONZE PAINT. PROVIDE CONCRETE BASE PER DRAWING DETAIL S/E-4. PROVIDE ALL NECESSARY MOUNTING FITTINGS, BRACKET & HARDWARE. PROVIDE ONE (1) 400-WATT HPS LAMP. TOP OF CONCRETE BASE SHALL BE 24" ABOVE GRADE AND 48" FROM EDGE OF PAVEMENT.
- TWO (2) LITHONIA/HI-TEK #KAS2-400S-R4-277-SP12-SF-DBE, or EQUAL, 400-WATT HIGH PRESSURE SODIUM LUMINAIRE MOUNTED ON A 30-FOOT SQUARE ALUMINUM POLE-POLE AND LUMINAIRE FINISH SHALL BE MANUFACTURER'S STANDARD DARK BRONZE PAINT. PROVIDE CONCRETE BASE PER DRAWING DETAIL S/E-4. PROVIDE ALL NECESSARY MOUNTING FITTINGS, BRACKET & HARDWARE. PROVIDE ONE (1) 400-WATT HPS LAMP. TOP OF CONCRETE BASE SHALL BE 24" ABOVE GRADE AND 48" FROM EDGE OF PAVEMENT. LUMINAIRES SHALL BE 180" APART.

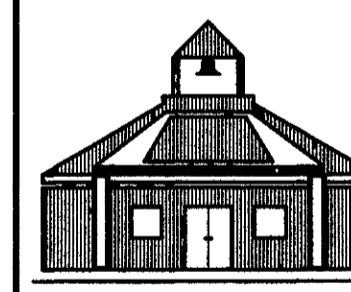
2 NOTES

1. STUB & CAP TWO (2) 3" CONDUITS FOR TELEPHONE/DATA & ONE (1) 2" CONDUIT FOR CABLE TV AT LOCATION DIRECTED BY UTILITY REPRESENTATIVES - VERIFY EXACT LOCATIONS PRIOR TO RUNNING CONDUIT.
2. STUB 3/4" FROM BASE OF POLE INDICATED TO A POINT IN THE GRASSY AREA NEAR THE FLAGPOLE - ALSO, RUN A 3/4" CONDUIT UNDER THE WALK TO THE OTHER SIDE OF THE FLAGPOLE - CAP ENDS OF CONDUITS & MARK CLEARLY MARK LOCATIONS.



BULLARD ASSOCIATES
Engineers
246 Deckmont Drive
Fort Mill, South Carolina 29715
Telephone: 803/748-3580
FAX: 803/748-3766

ANDREWS
MIDDLE SCHOOL
CHEROKEE COUNTY, N.C.



CHEROKEE COUNTY SCHOOLS

SHEET TITLE
SITE PLAN - ELECTRICAL

DRAWN BY HP	APPROVED BY JCB
JOB NO. AMS/97103	
APPROVAL DATE 04/21/98	
RD ISSUE DATE 04/28/98	

SHEET
OF

E-5
14