

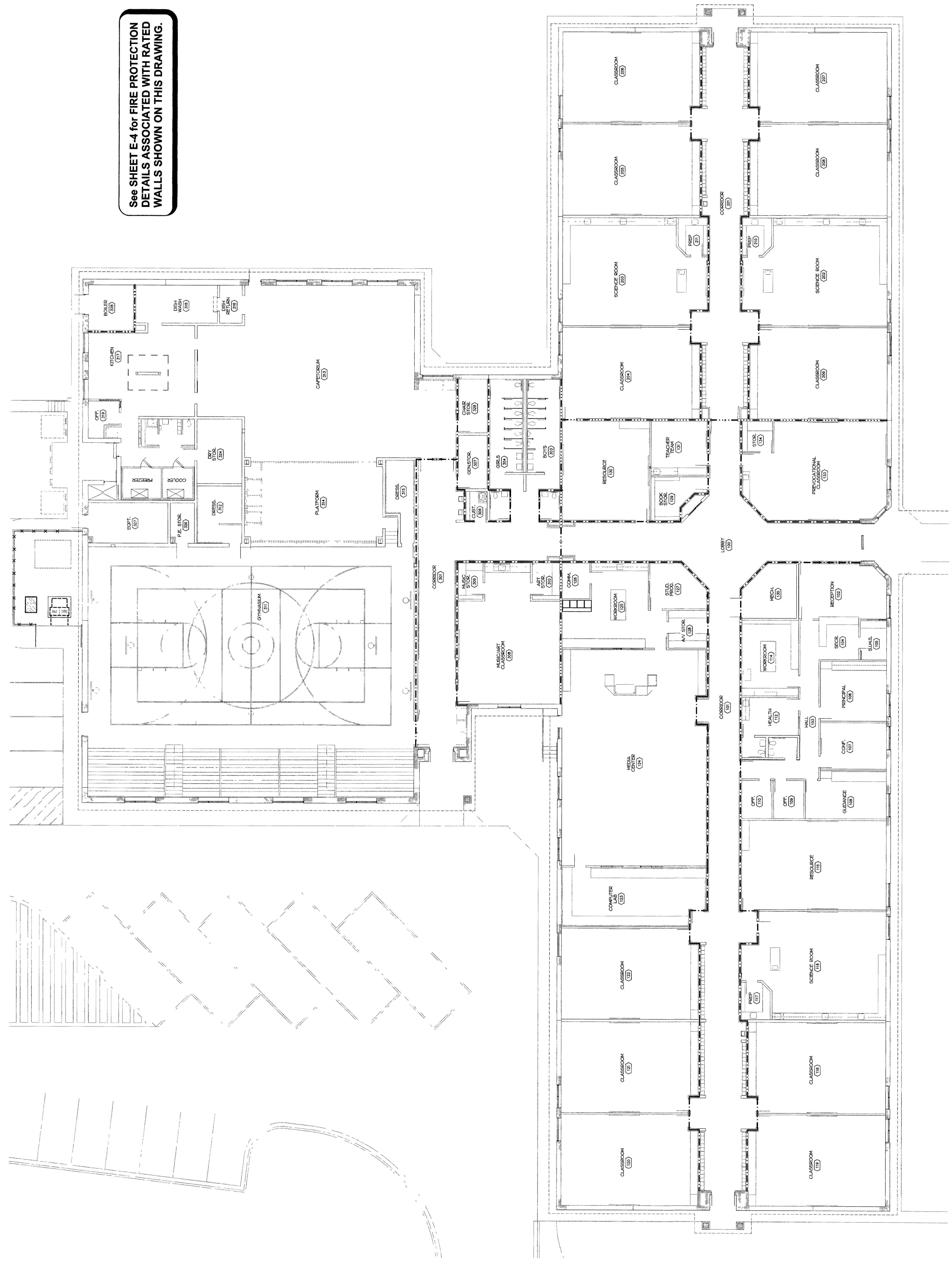
NOTE:

ALL PENETRATIONS OF FIRE-RATED PARTITIONS & SMOKE SEPARATIONS SHALL BE PROTECTED BY THE UL SYSTEMS DETAILED ON THIS DRAWING, INSTALLATIONS MUST COMPLY WITH REFERENCED UL SYSTEM NUMBERS.

LEGEND

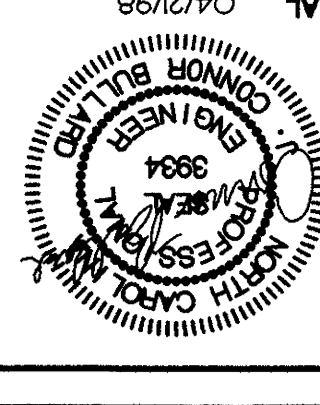
- 1-HOUR RATED WALL
- 2-HOUR RATED WALL
- 4-HOUR RATED WALL

See SHEET E-4 for FIRE PROTECTION DETAILS ASSOCIATED WITH RATED WALLS SHOWN ON THIS DRAWING.



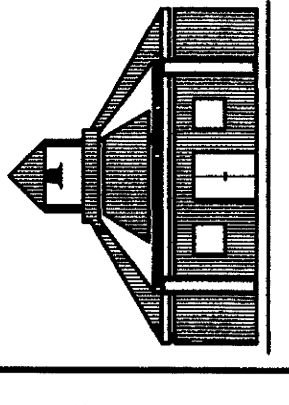
1 COMPOSITE FLOOR PLAN (FIRE RATED WALLS)
3/22" = 1'-0"

ARCHITECTURE
PROFESSIONAL ASSOCIATION
4701 HEDGEMORE DRIVE
CHARLOTTE, NC 28208-3281
TEL: (703) 527-6545
FAX: (703) 527-6545



BUHARD ASSOCIATES
Engineers
246 Dockmont Drive
Fort Mill, South Carolina 29715
803/548-3580
803/548-3586
Telephone:
FAX:

ANDREWS
MIDDLE SCHOOL
CHEROKEE COUNTY, N.C.



CHEROKEE COUNTY SCHOOLS

SHEET TITLE
COMPOSITE PLAN

DRAWN BY: HP
APPROVED BY: JCB
JOB NO.: AMS197103
APPROVAL DATE: 04/27/08
RD ISSUE DATE: 04/28/08

SHEET E-6
OF 14