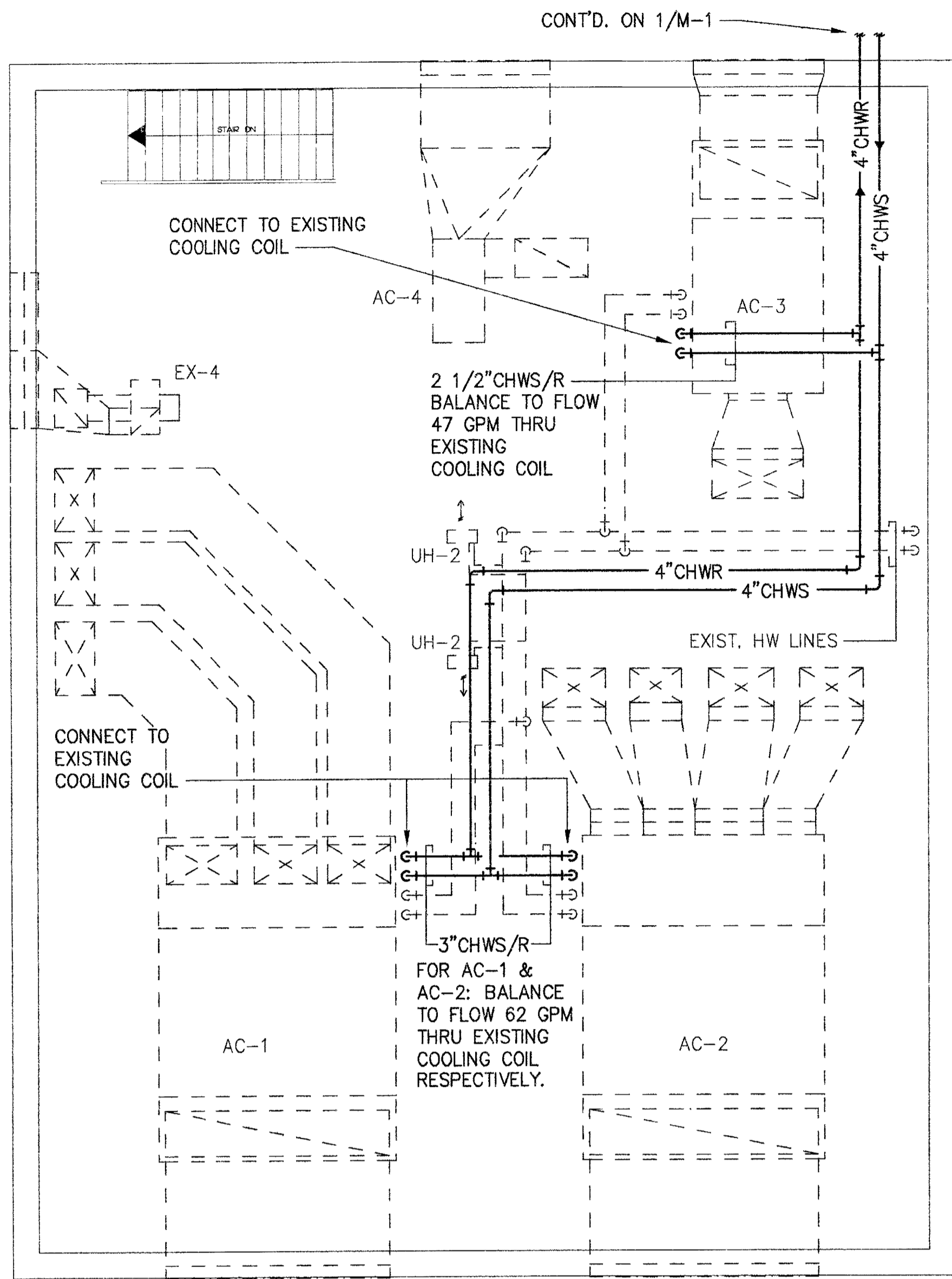


LINETYPE LEGEND

	EXISTING TO REMAIN
	NEW WORK



3 MECHANICAL ROOM PLAN
M-1A 1/4"=1'-0"

CHILLER SCHEDULE

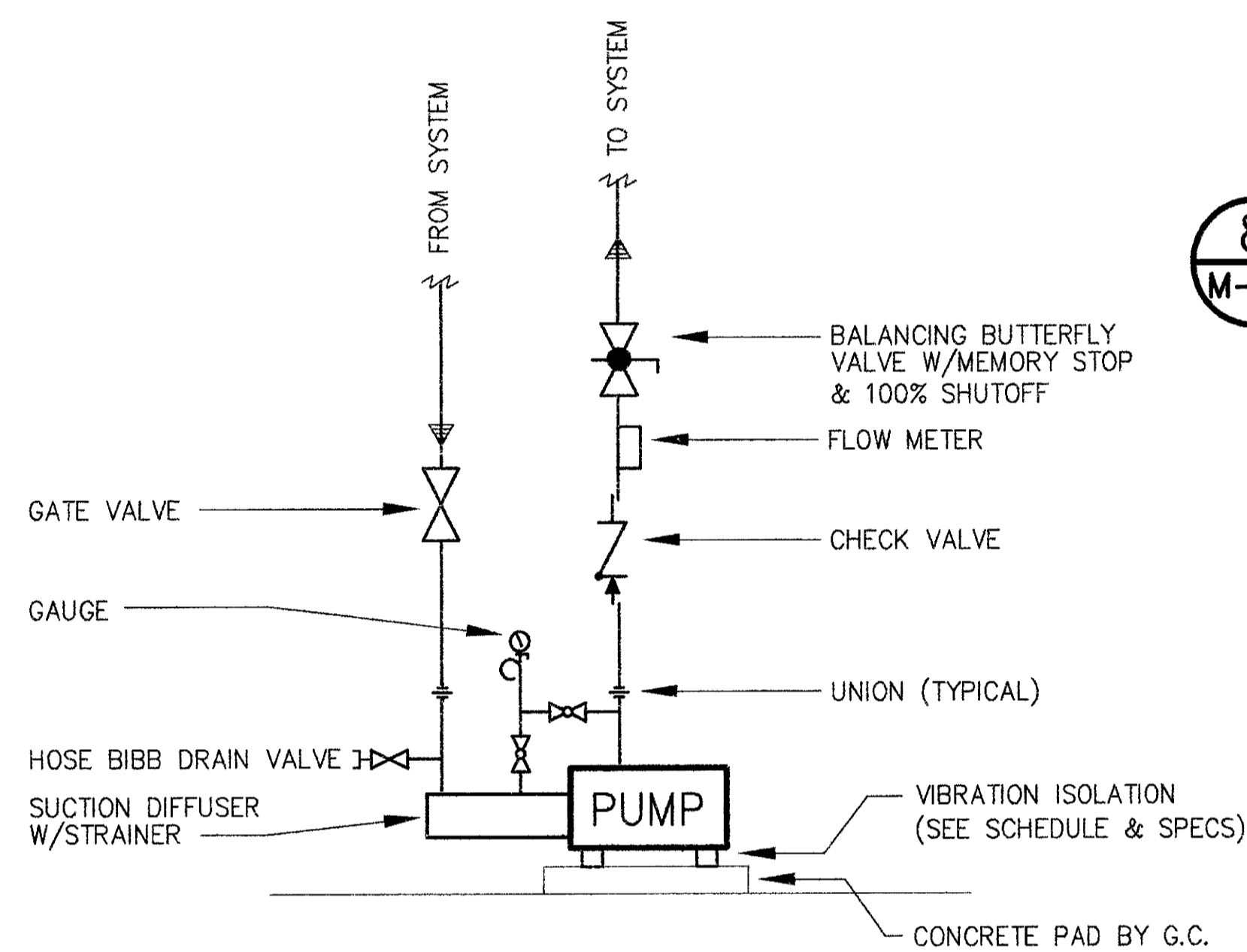
Unit Tag	Capacity (Tons)	Evaporator					Amb. Temp. (F)	Compressor			Condenser Fan			Vibration Isolation		Starter Type	Model	Remarks			
		EWT (F)	LWT (F)	GPM	PD (ft)	Foul. Factor		Qty.	RLA (ea.)	LRA (ea.)	Volt	Phase	Qty.	FLA (ea.)	Volt				Phase	Type	Deflection
C-1	79.5	54	44	189	13	.00025	95	2	62	380	460	3	8	2.5	460	3	none	-	x-line	Trane RTAA 80	1

1. Equals by Carrier and McQuay.

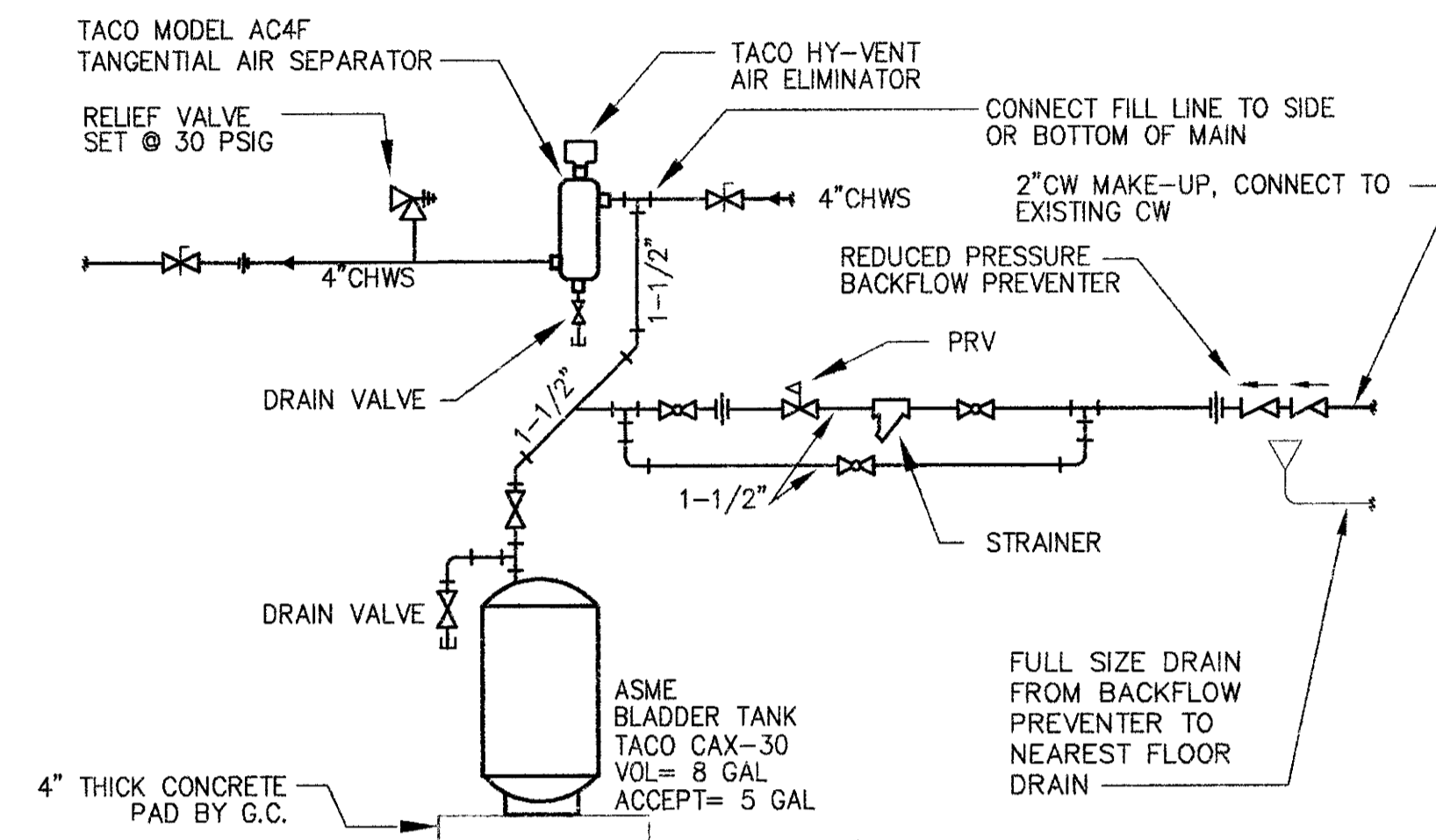
PUMP SCHEDULE

Unit Tag	Service	GPM	Head (ft.)	RPM	Eff. (%)	HP	Volts	Phase	Type	Vibration Isolation		Model	Remarks
										Type	Deflection		
P-2	Chilled Water	189	60	1750	70	5	460	3	End Suction	A-1	1/4"	Taco FE2008	1-3

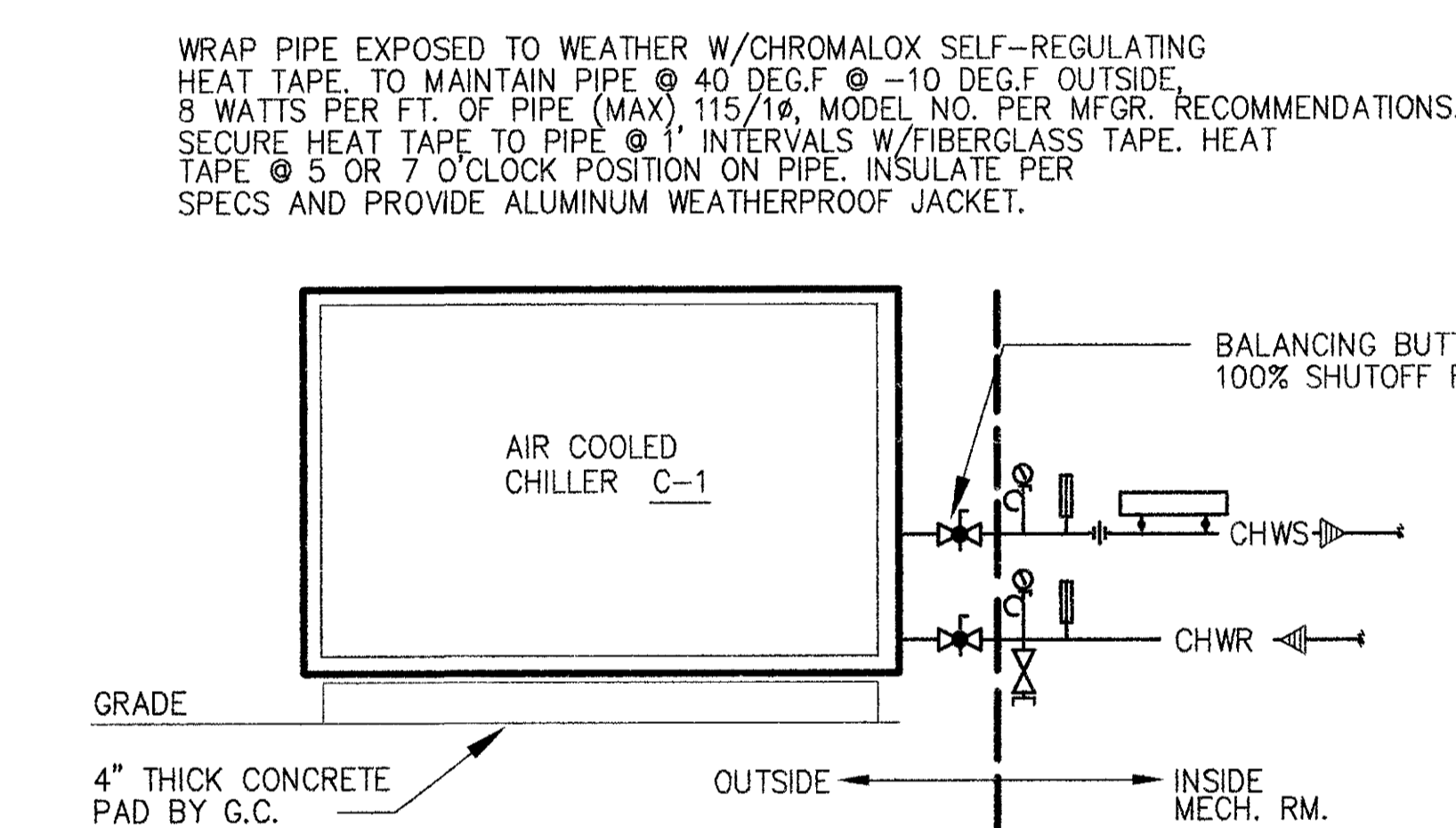
1. Equals by B&G and Paco.
2. See detail 6/M-1A.
3. Pump P-1 is an existing HW pump. See 2/M-1A.



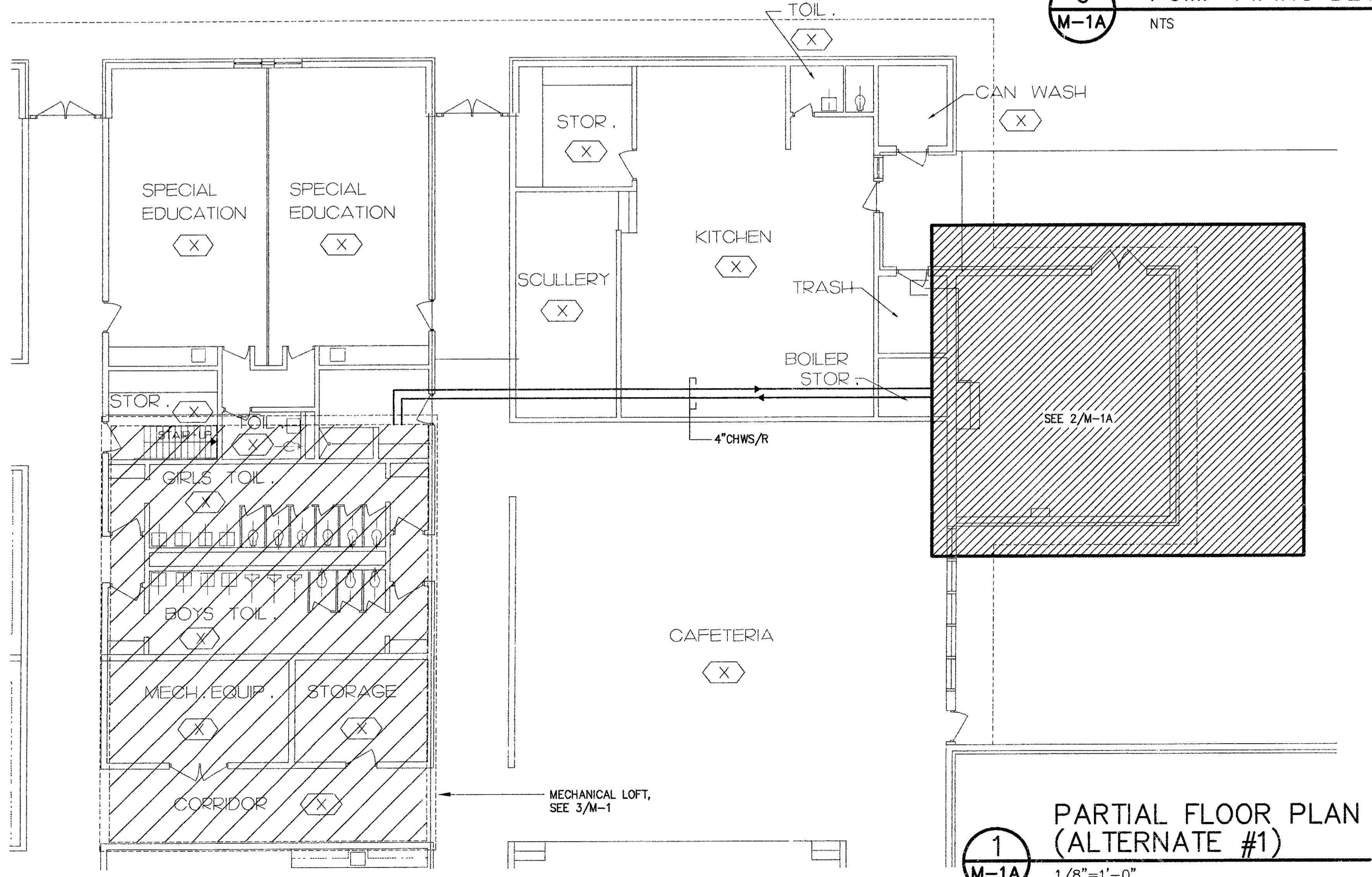
6 PUMP PIPING DETAIL
M-1A NTS



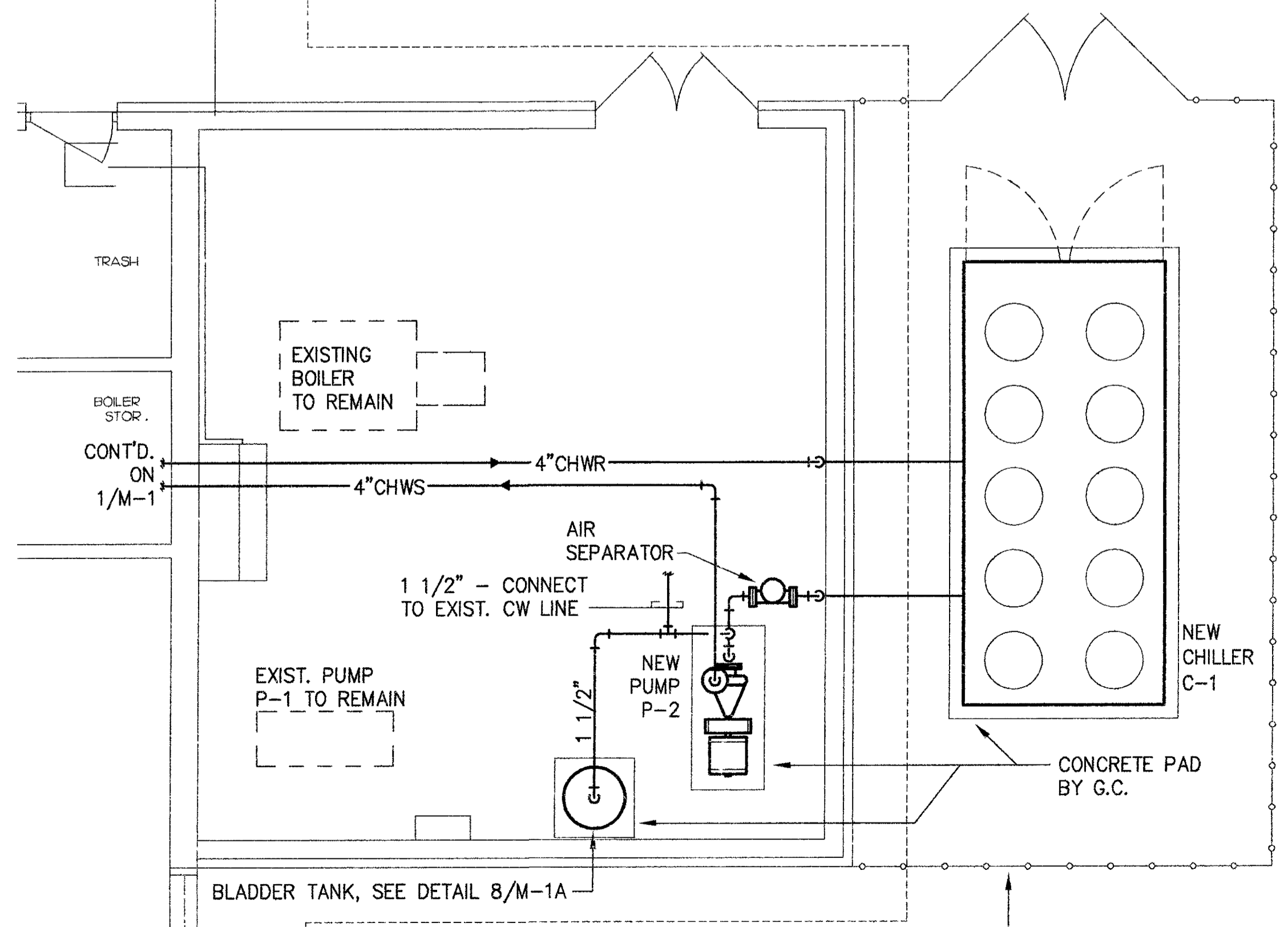
8 PRESSURIZATION & AIR ELIMINATION DETAIL
M-1A NO SCALE NOTE: PRV SET POINT = 12 PSIG



7 AIR COOLED CHILLER PIPING DETAIL
M-1A NTS NOTE: SEE LEGEND FOR EQUIPMENT IDENTIFICATION



1 PARTIAL FLOOR PLAN (ALTERNATE #1)
M-1A 1/8"=1'-0"



2 BOILER ROOM PLAN
M-1A 1/4"=1'-0"

BUILDING CODE SUMMARY

MECHANICAL AND BUILDING SERVICE SYSTEMS AND EQUIPMENT:

METHOD OF COMPLIANCE:
[PRESCRIPTIVE] ENERGY COST BUDGET

THERMAL ZONE: VI (CHEROKEE CO.)

EXTERIOR DESIGN CONDITIONS:
WINTER DRY BULB: 10° F.
SUMMER DRY BULB: 87° F.
INTERIOR DESIGN CONDITIONS:
WINTER DRY BULB: 70° F.
SUMMER DRY BULB: 75° F.
RELATIVE HUMIDITY: 50 %

BUILDING HEATING LOAD:
CALCULATED: N/A MBH
INSTALLED: N/A MBH

IF OVERSIZED, STATE REASON:

BUILDING COOLING LOAD:
CALCULATED: 74.6 TONS
INSTALLED: 78.7 TONS

IF OVERSIZED, STATE REASON:
SMALLEST SIZE TO MEET LOAD.

MECHANICAL SPACE CONDITIONING SYSTEM:

DESCRIPTION OF UNIT: EXISTING MULTIZONE AHU'S

HEATING EFFICIENCY (ACTUAL/MIN. REQ'D): N/A
COOLING EFFICIENCY (ACTUAL/MIN. REQ'D): N/A

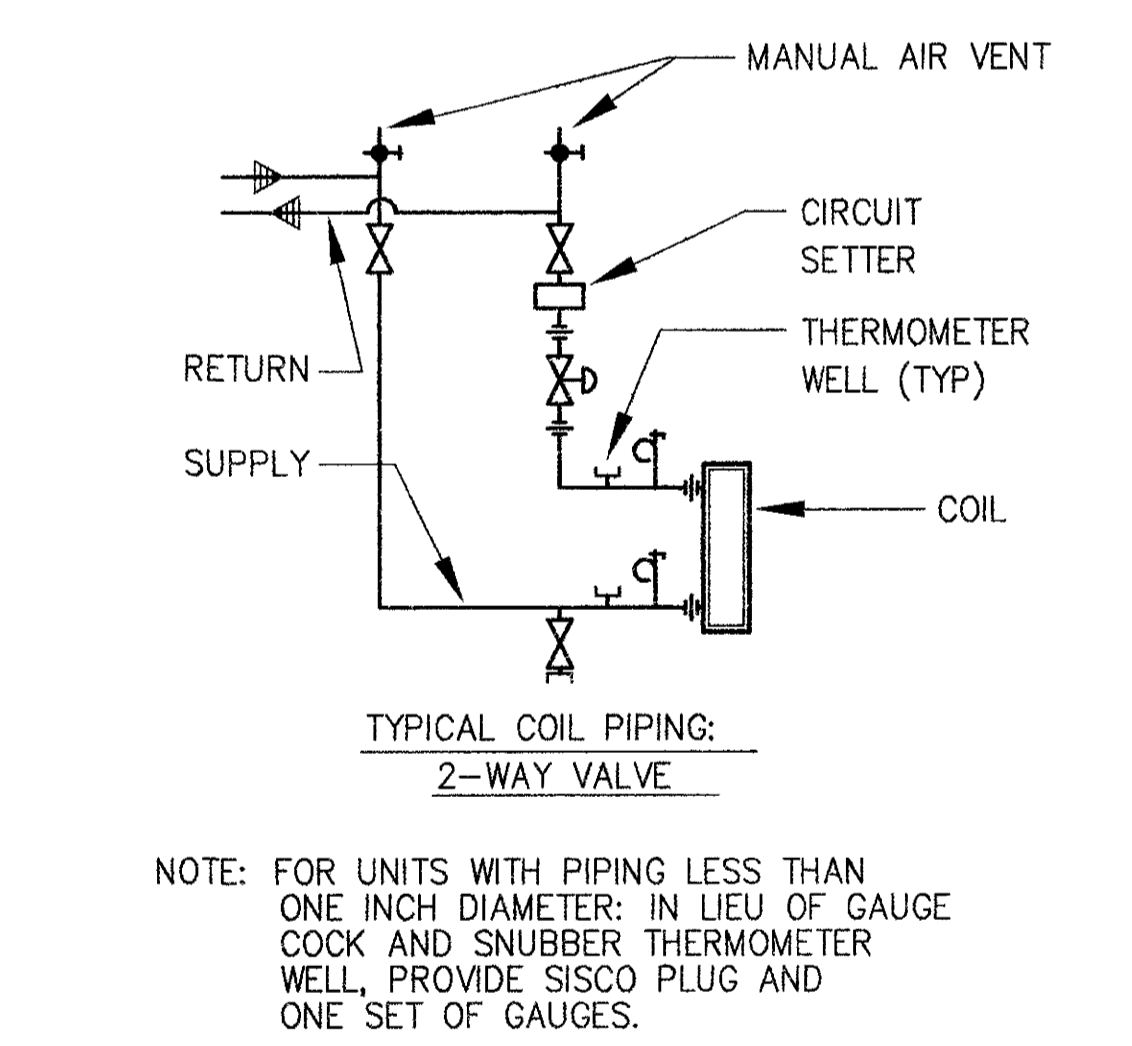
EQUIPMENT EFFICIENCIES:

ITEM	EFFICIENCY, COP	MIN. REQ'D
C-1	3.21	2.7

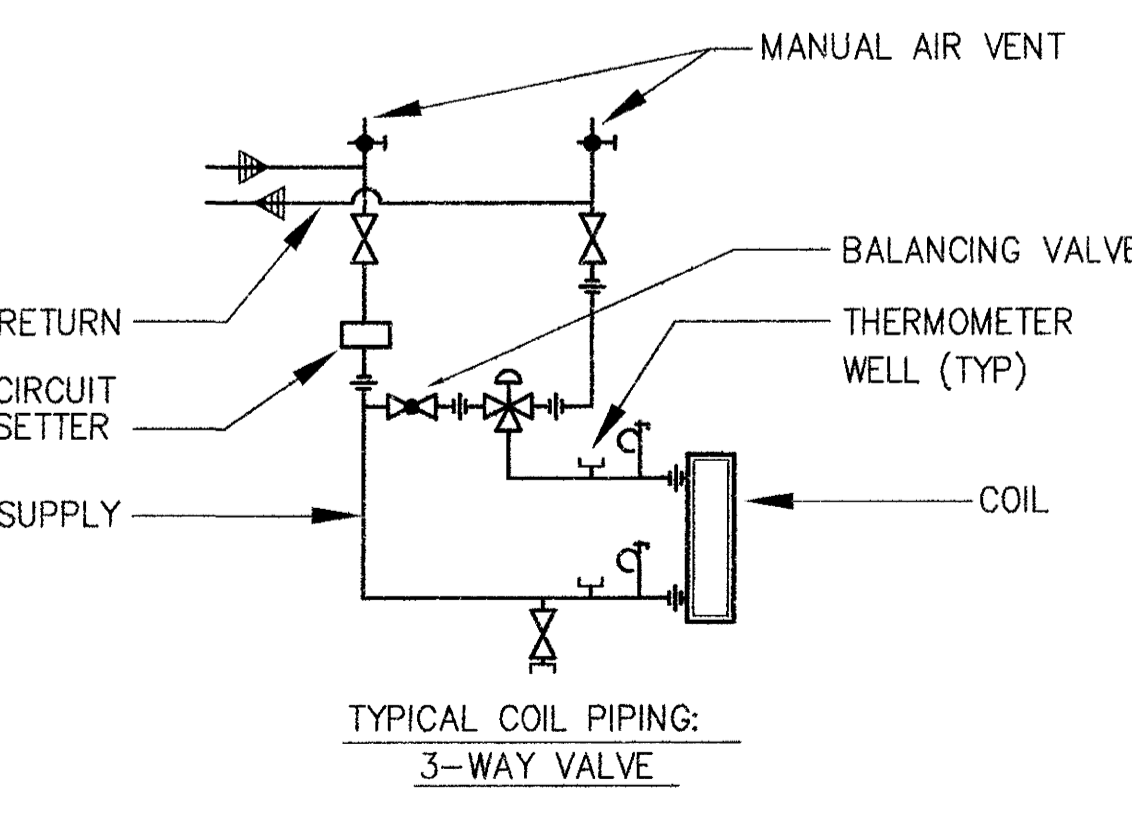
SPECIFICATIONS:
THE FOLLOWING ITEMS DETAILED IN SPECIFICATIONS SHALL MEET OR EXCEED MINIMUM ENERGY CODE REQUIREMENTS: MOTOR EFFICIENCIES, CONTROLS, PIPE AND DUCT INSULATION, DUCT CONSTRUCTION, AIR AND HYDRONIC BALANCING, SHOWER HEADS AND LAVATORY FAUCETS.

DESIGNER STATEMENT:
TO THE BEST OF MY KNOWLEDGE AND MY BELIEF, THE DESIGN OF THIS BUILDING COMPLIES WITH THE MECHANICAL SYSTEM, SERVICE SYSTEM AND EQUIPMENT REQUIREMENTS OF THE NORTH CAROLINA STATE BUILDING CODE, VOLUME 4 - ENERGY.

Michael Ward
MICHAEL WARD
PROFESSIONAL ENGINEER



5 COIL PIPING DETAIL
M-1A NTS NOTE: PROVIDE WITH AC-3 ONLY



4 COIL PIPING DETAIL
M-1A NTS NOTE: PROVIDE WITH AC-1 & AC-2 ONLY