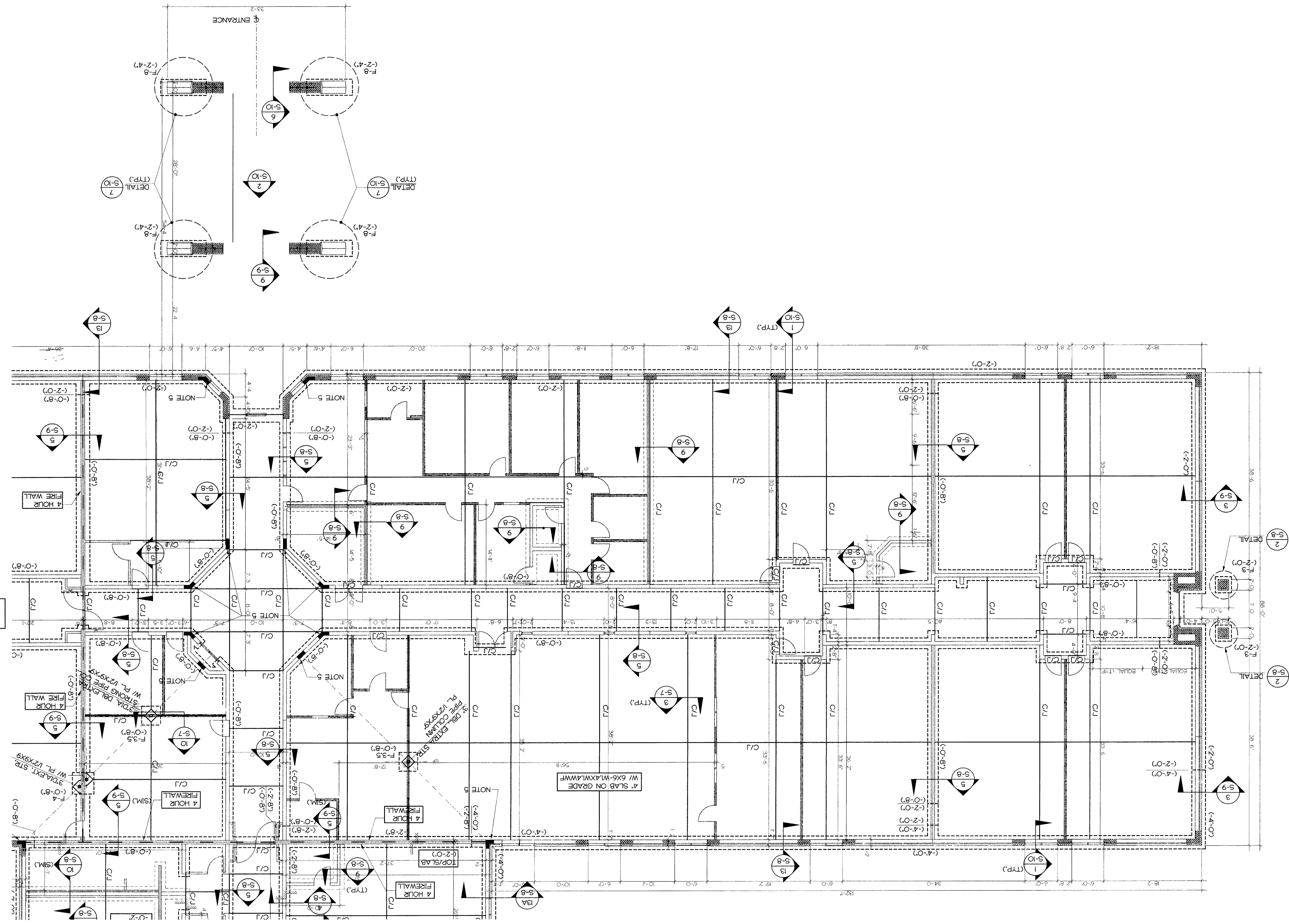


PLAN NOTES:
 1. TOP OF SLAB ELEVATION 1865.0'-0" UNLESS NOTED OTHERWISE.
 2. TOP OF FOOTING ELEVATION NOTED THUS (-1'-4") RELATIVE TO TOP OF SLAB ELEVATION 0'-0".
 3. FOR GENERAL NOTES, TYPICAL DETAILS AND FOOTING SCHEDULE, SEE DRAWING S-7.
 4. VERIFY DEPRESSION DEPTH WITH EQUIPMENT MANUFACTURER.
 5. GROUT 4 CELLS SOLID WITH #4 PER CELL AT BEAM BEARINGS.



DRAWING S-3
 FOUNDATION PLAN SEE
 FOR CONTINUATION OF

DRAWING S-2
 FOUNDATION PLAN SEE
 FOR CONTINUATION OF

SHEET
S-1

REVISIONS

NO. DATE DESCRIPTION

1 4/28/98

APPROVAL DATE 4/22/98

JOB NO. AMS-9703

DRAWN BY A.O.

APPROVED BY

FOUNDATION PLAN 'A'

PLAN - FLOOR

SHEET TITLE

FOUNDATION

CHEROKEE COUNTY SCHOOLS

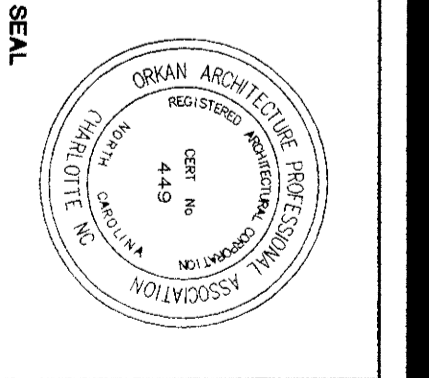
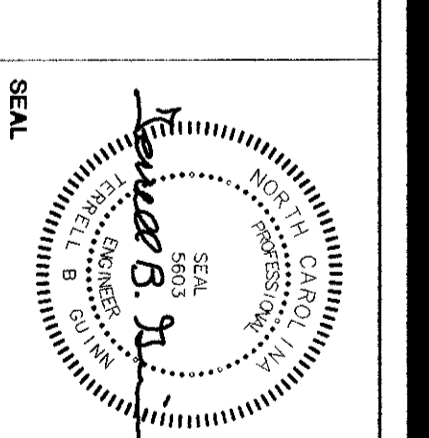


ANDREWS

MIDDLE SCHOOL

CHEROKEE COUNTY, N.C.

King / Guinn Associates P.A.
 Structural Engineers
 Charlotte, North Carolina
 (704) 587-1340 Fax (704) 587-1365



ARCHITECTURE

PROFESSIONAL ASSOCIATION

FOR THE STATE OF NORTH CAROLINA

FILE NO. 527-585

FAX 527-585