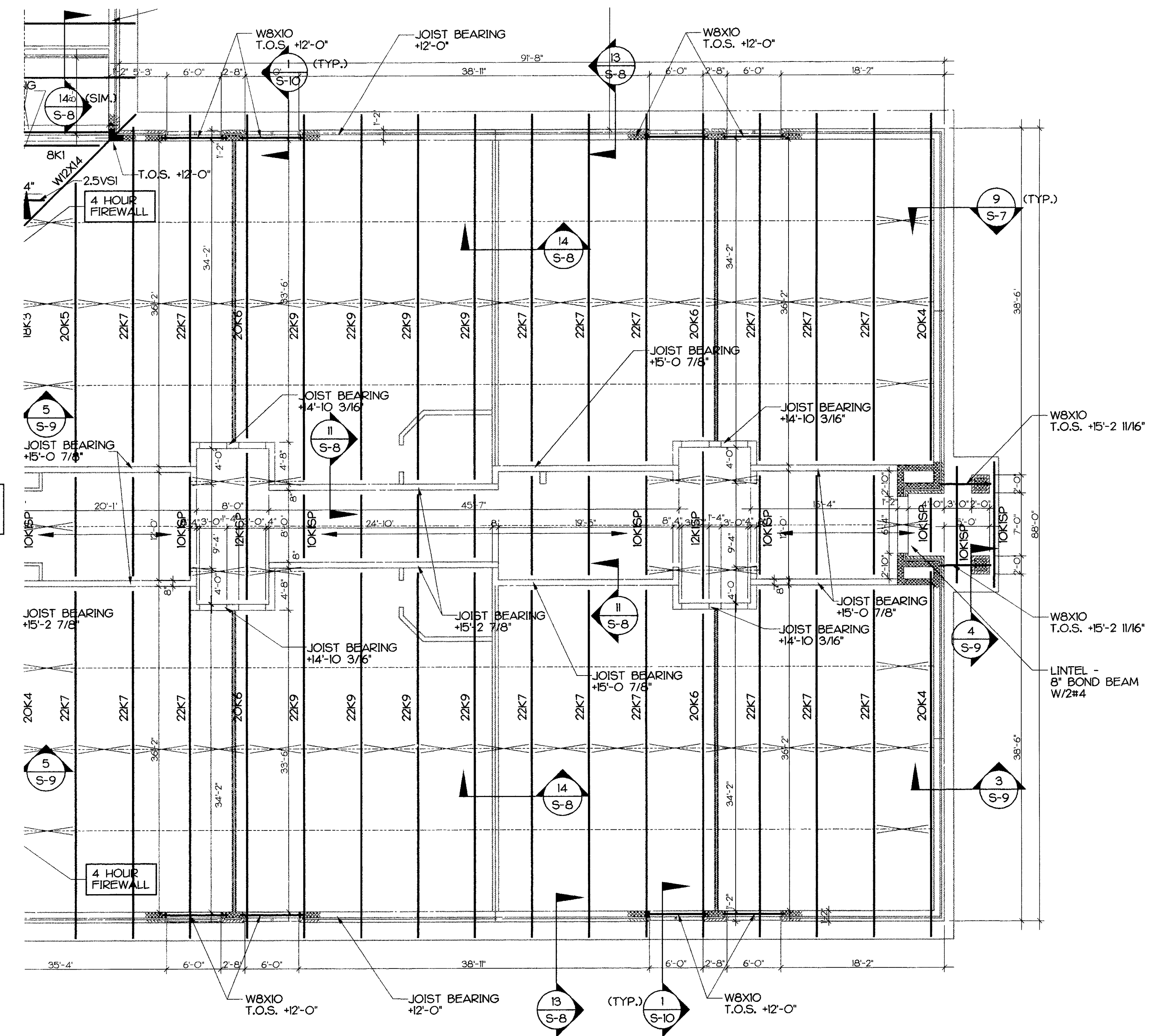


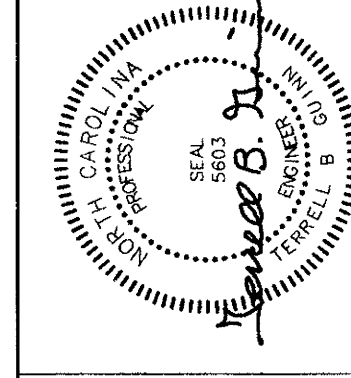
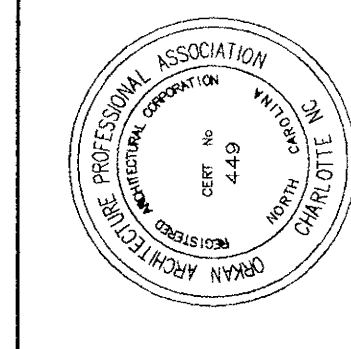
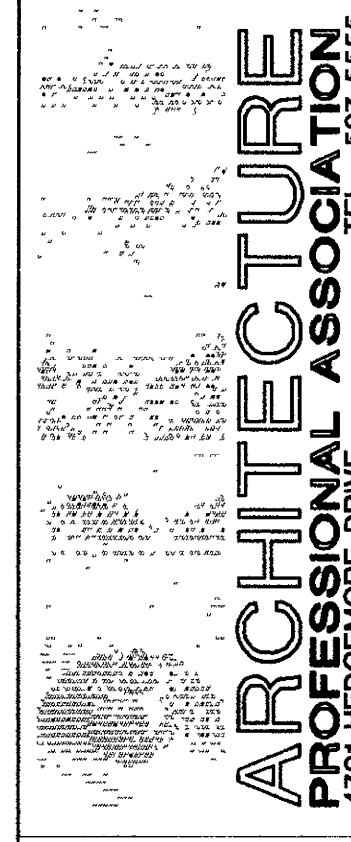
FOR CONTINUATION OF  
ROOF FRAMING PLAN  
SEE DRAWING S-6

FOR CONTINUATION OF  
ROOF FRAMING PLAN  
SEE DRAWING S-4



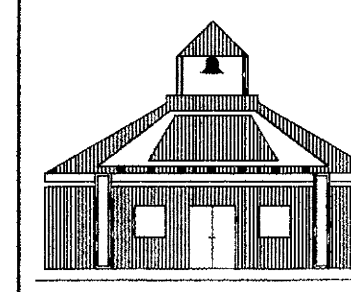
- PLAN NOTES:
1. TOP OF ROOF FRAMING ELEVATION VARIES SEE PLAN.
  2. FOR GENERAL NOTES SEE DRAWING S-7.
  3. ROOF DECK- 1 1/2" x 22 GAGE WIDE RIB ROOF DECK  
DECK WELDING- 3/8" WELD PATTERN WITH 2 SIDELAP FASTENERS PER SPAN
  4. JOIST NOTED SP SHALL HAVE DOUBLE PITCHED TOP CHORD.
  5. ALL ROOF SLOPES 1/2 UNLESS NOTED OTHERWISE.

**1** ROOF FRAMING PLAN - FLOOR PLAN 'A'  
1/8" = 1' - 0"



King / Guinn Associates P.A.  
Structural Engineers  
Charlotte, North Carolina  
(704) 587-1340 Fax (704) 587-1365

**ANDREWS  
MIDDLE SCHOOL  
CHEROKEE COUNTY, N.C.**



**CHEROKEE  
COUNTY  
SCHOOLS**

SHEET TITLE  
**ROOF FRMG.  
PLAN -  
FLOOR  
PLAN 'A'**

DRAWN BY	APPROVED BY
	A.O.
JOB NO.	AMS-97105
APPROVAL DATE	4/22/99
BID ISSUE DATE	4/28/99
REVISIONS	

SHEET **S-5**  
OF 10