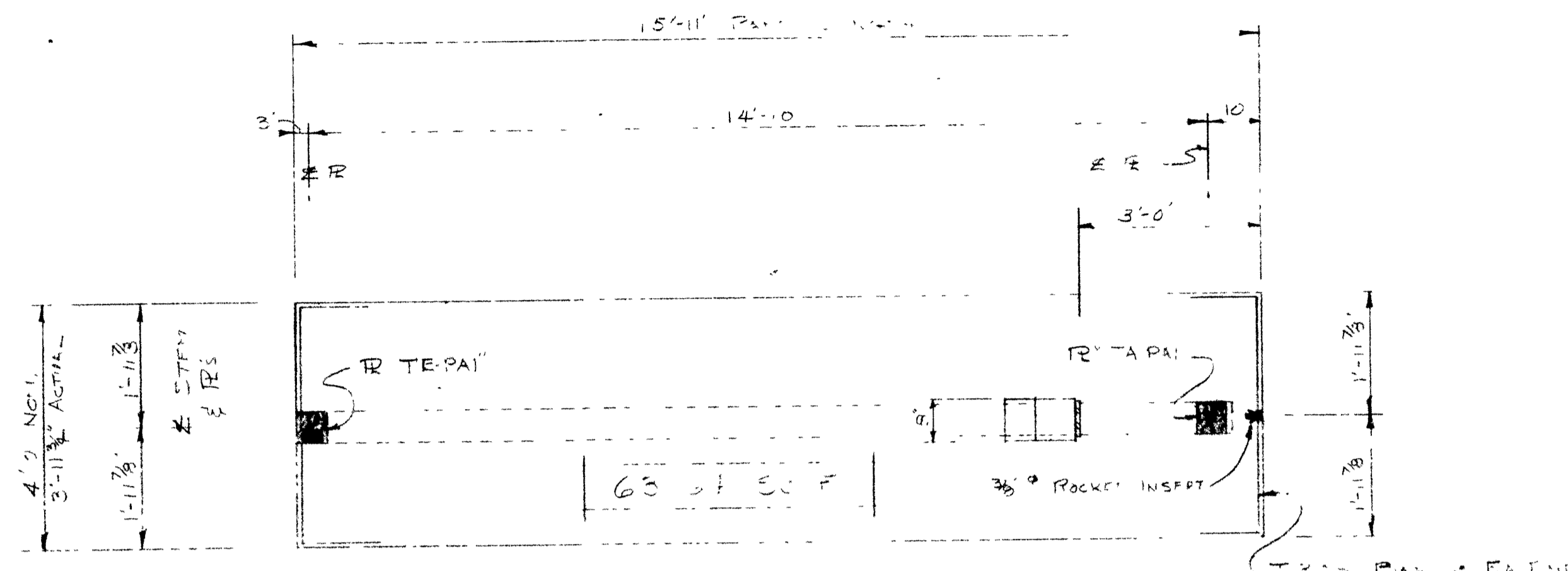


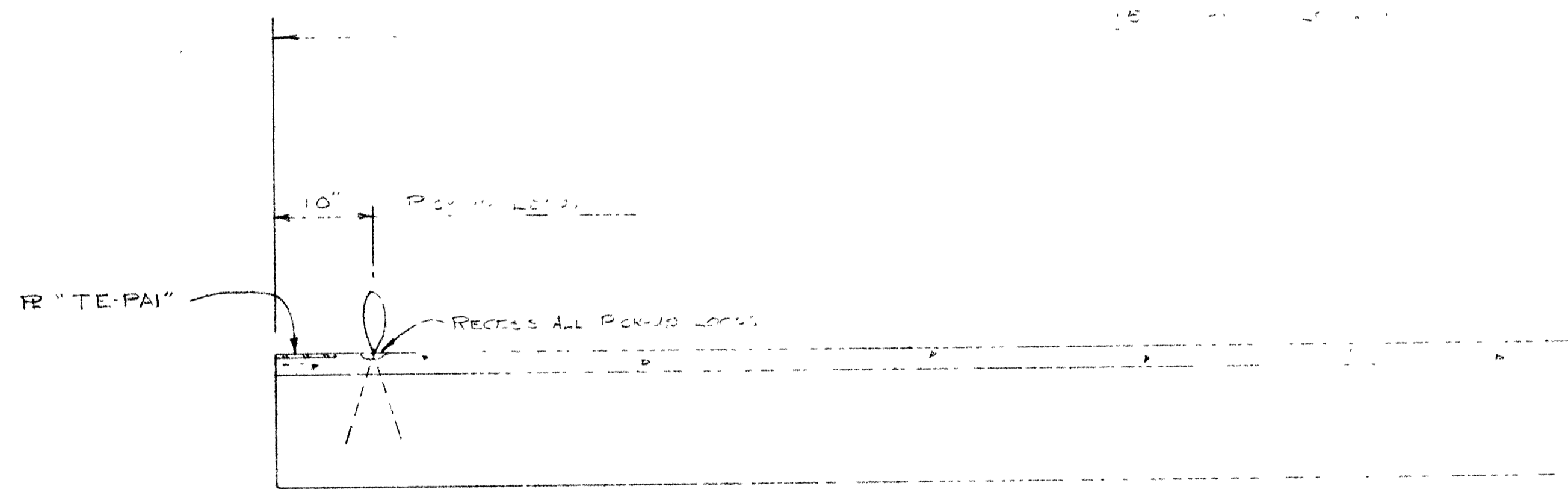
PLAN OF "TWA-4" (12-REQ'D)

MATERIAL REQUIRED FOR 1 EACH

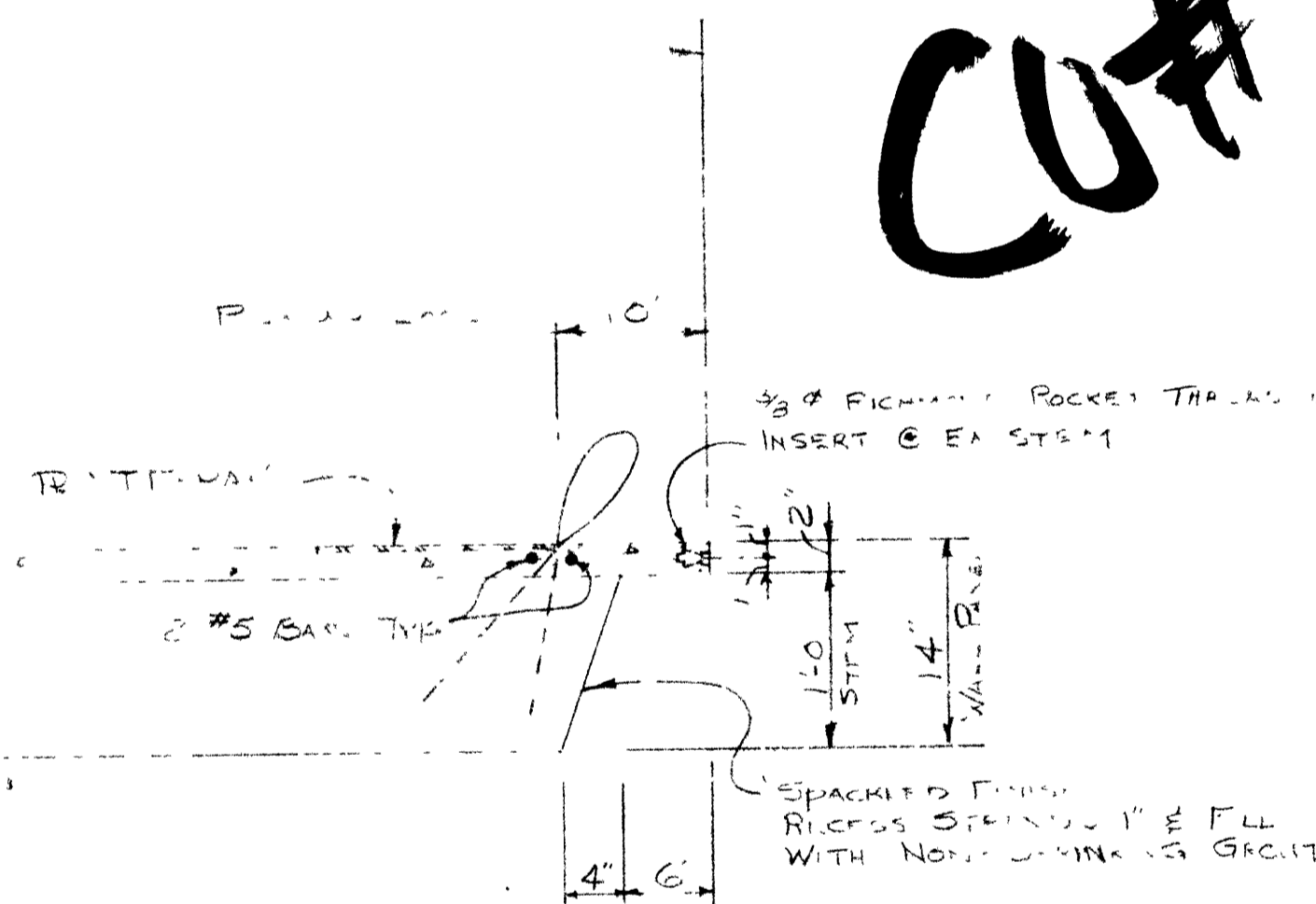


PLAN OF "TWA-5" (1-REQ'D)

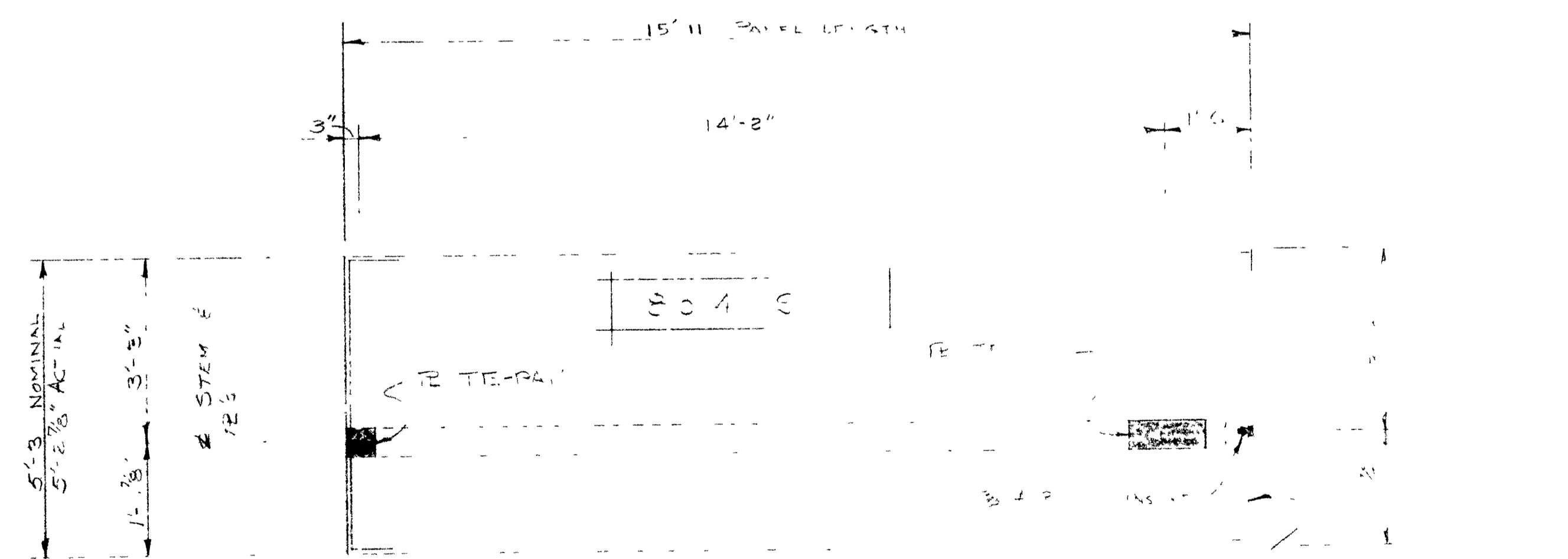
MATERIAL REQUIRED FOR 1 EACH



ELEVATION OF "TWB" SERIES WALL PANELS



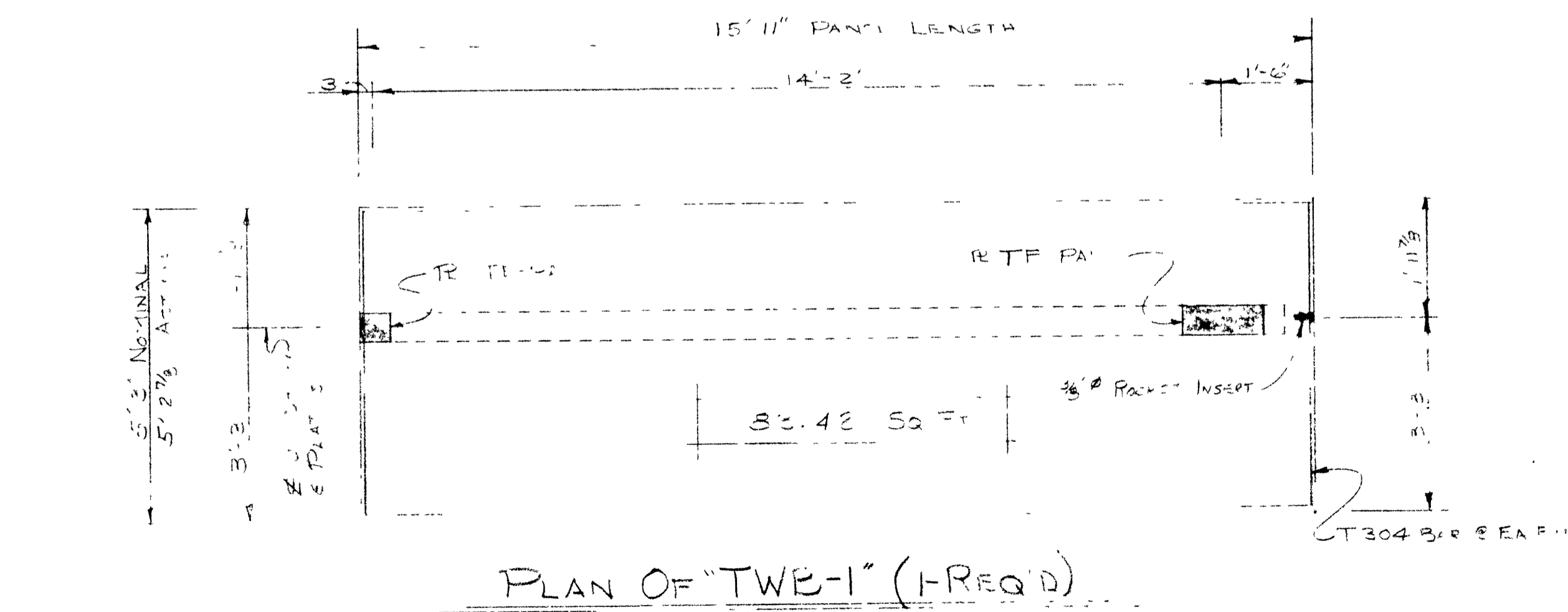
TYPICAL SECTION AND STRAND PATTERN FOR NON-LOAD BEARING WALL PANELS ONLY



PLAN OF "TWB-4" (1-REQ'D)

MATERIAL REQUIRED FOR 1 EACH

- 2- EA. T304 BARS
- 1- EA. "TE-PAI" RESSY
- 1- EA. 3/8" Rocket Insert
- 1- EA. "TF-PAI" RESSY



PLAN OF "TWB-1" (1-REQ'D)

MATERIAL REQUIRED FOR 1 EACH

- 2- EA. T304 BARS
- 1- EA. 3/8" Rocket Insert
- 1- EA. "TE-PAI" RESSY
- 1- EA. "TF-PAI" RESSY

2 ea. 3/8 dia. 250K strands • 4.5 K/strand (F)
2 ea. 1/2" dia. 270K strands • 2.5 K/strand (F)
$f'_c = 5000$ p.s.i. • 28 days
$f'_t = 5000$ p.s.i. • transfer
concrete = 150 p.c.f.

TEST REQUIREMENTS

- Make Extra cylinders to be Transported to Independent Lab
- Make cylinders as required for Plant Quality Control System
- See General Notes for Special or Additional Instructions

CUT#4

NO.	DATE	REVISION

TRUDY'S MURPHY NORTH CAROLINA

MACON PRESTRESSED CONCRETE COMPANY			
MACON, GEORGIA		ATLANTA, GEORGIA	
COLUMBIA, SOUTH CAROLINA		COLUMBIA, SOUTH CAROLINA	
DATE	DESIGNED	DRAWN	DWG.
8-5-76	EP	EP	W-22
JOB NO.	CHECKED	SCALE	BY
11-1-54	SHOW		