

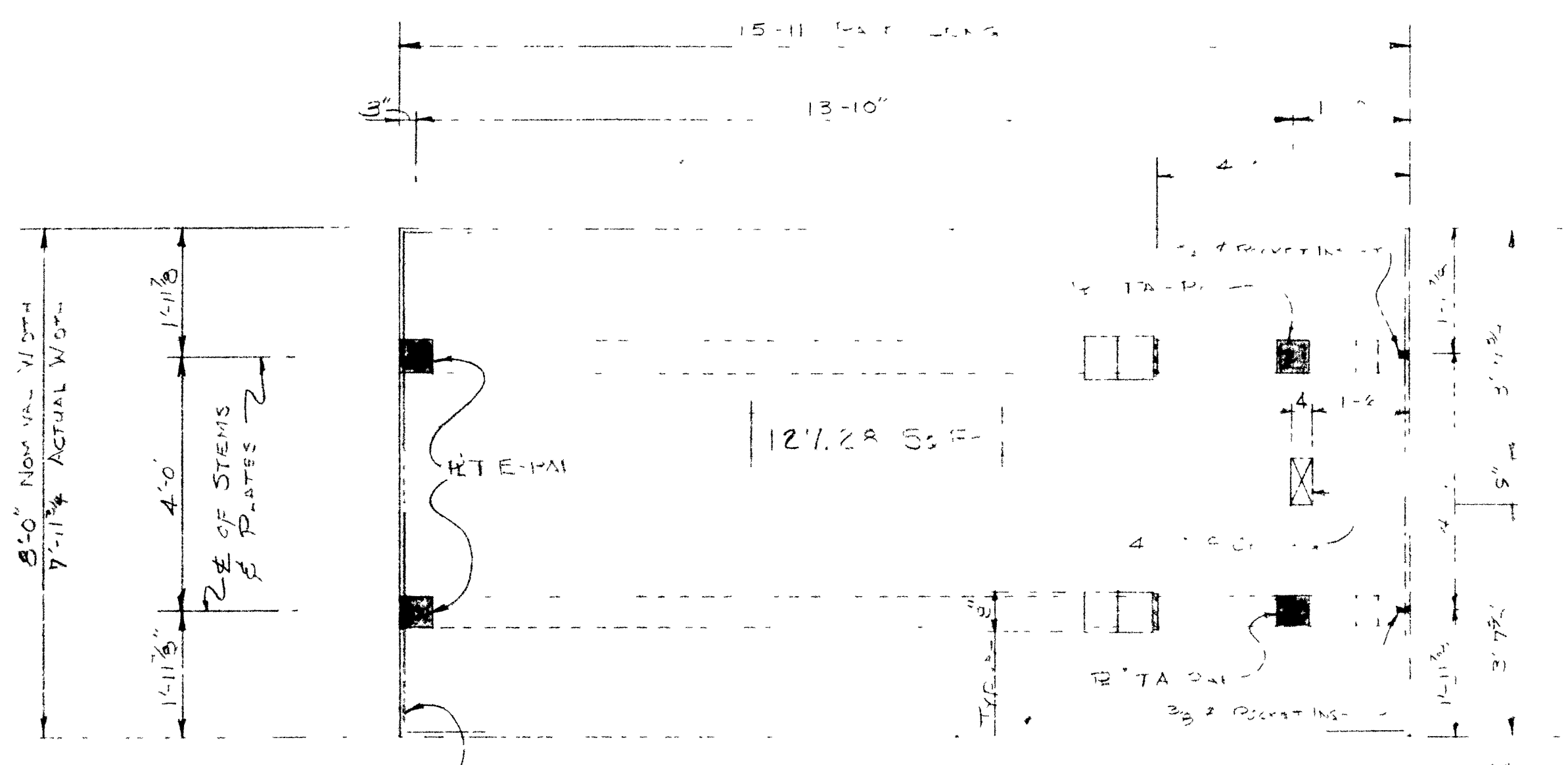
Typical Section and Strand Pattern
For Load Bearing Wall Panels Only

ELEVATIONS OF "TWA" SERIES WALL PANELS

- 2 ea. $\frac{3}{8}$ dia. 250 strands
- 14.0 K strand (F)
- 2 ea. $\frac{1}{2}$ dia. 270 strands
- 2 ea. 3/8 dia. 270 strands
- 5000 psi concrete
- 3000 psi mortar

TEST REQUIREMENTS

- [] Make Extra cylinders to be Transported to Independent Lab
- [] Make cylinders as required for Plant Quality Control System
- [] See General Notes for Special or Additional Instructions

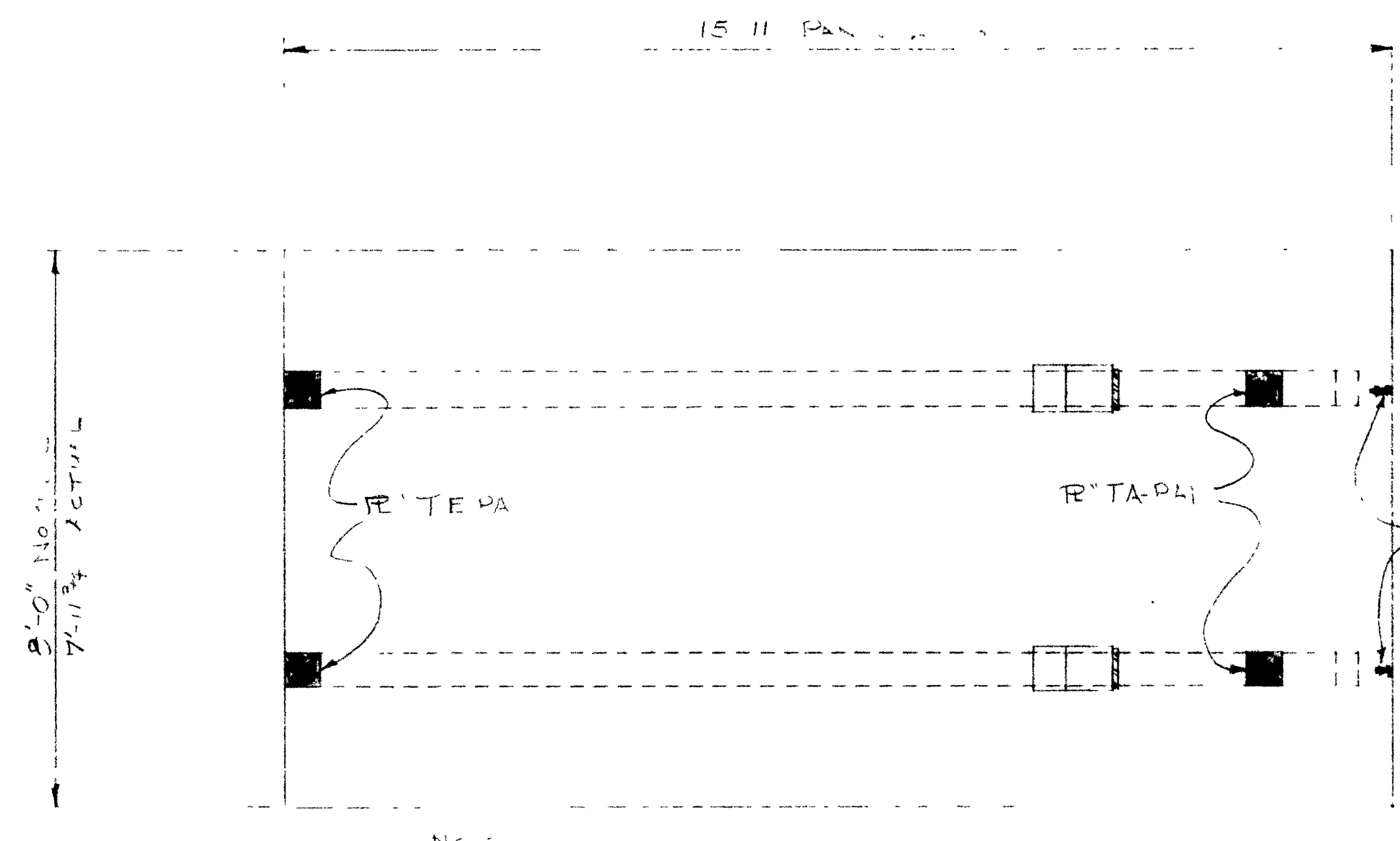


PLAN OF TWA-1 (6-REQD)

MATERIAL REQUIRED FOR 1 EACH

4 EA T301 BARS
2 EA T302 BARS
1 EA 3/8 Recess Insult

2 EA TA-PA1 R Assy
1 EA TE-PA1 R Assy
1 EA TG-PA1 R Assy



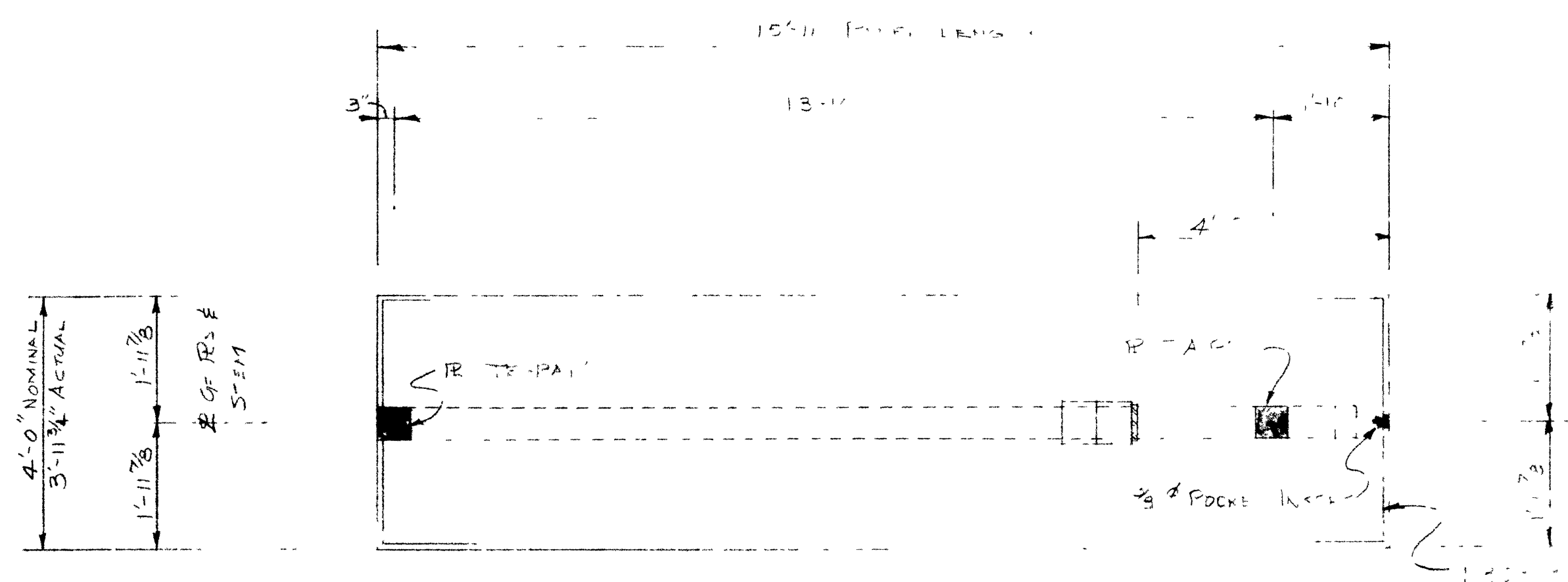
PLAN OF TWA-2 (6-REQD)

MATERIAL REQUIRED FOR 1 EACH

4 EA T301 BARS
2 EA T302 BARS
1 EA 3/8 Recess Insult

2 EA TA-PA1 R Assy
1 EA TE-PA1 R Assy
1 EA TG-PA1 R Assy

C043



PLAN OF TWA-3 (1-REQD)

MATERIAL REQUIRED FOR 1 EACH

4 EA T301 BARS
2 EA T302 BARS
1 EA 3/8 Recess Insult

1 EA TA-PA1 R Assy
1 EA TE-PA1 R Assy
1 EA TG-PA1 R Assy

NO.	DATE	REVISION

TRUDY'S
MURPHY, NORTH CAROLINA

**MACON PRESTRESSED
CONCRETE COMPANY**
MACON, GEORGIA ATLANTA, GEORGIA
COLUMBIA, SOUTH CAROLINA

DATE	DESIGNED	DRAWN
8-4-71		
JOB NO.	CHECKED	SCALE
1/2-257		

DWG. WP-1
SHT. OF